



Stormwater Solutions / Storage / Chambers

HydroStor®

Prinsco offers four sizes of high-performance HydroStor® stormwater chambers designed for site-specific applications such as parking lots, roadways and commercial developments. HydroStor chambers provide an environmentally sustainable underground water management system that optimizes groundwater recharge and saves valuable land resources. Our four storm chamber models are designed to fit almost any type of performance specifications, project footprint and construction budget.

HS290



HS180



HS75



HS31



	HS290	HS180	HS75	HS31
Installed Storage Capacity*	164.5 ft ³ /chamber	176 ft ³ /chamber	75 ft ³ /chamber	29.6 ft ³ /chamber
Height	59.5"	45.5"	29.7"	16"
Width	100.5"	77.8"	51"	34"
Unit Length	51.8"	88.7"	87.1"	87.3"
Installed Length	48.3"	85.3"	84.9"	85.5"
Weight	112 lbs	122 lbs	69 lbs	34 lbs
Chambers/Pallet	10	19	33	90
Material	Polypropylene	Polypropylene	Polypropylene	Polypropylene
Mfg. Process	Injection Molding	Injection Molding	Injection Molding	Injection Molding
Special Features	Integrated Handles	Integrated Handles	Integrated Handles	Low Profile Chamber
ASTM Standards	Meets or Exceeds	Meets or Exceeds	Meets or Exceeds	Meets or Exceeds

* Assuming 40% void volume of backfill with 9" bedding and 12" cover for HS290 and HS180, and 6" bedding and 6" cover for HS75 and HS31

Performance

- High performance polypropylene material
- Meets or exceeds **ASTM F2418** product standard and **ASTM F2787** design standard
- Meets **AASHTO H20** live load and **HL93** design load requirements
- Advanced injection molding technology for maximum structural performance

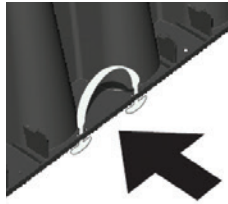
System Design

- Maximum land utilization and minimal environmental impact
- Design tool available at Prinsco.com/HydroStor-Resources
- Available as part of a complete solution with end caps, pipe manifolds and pretreatment options

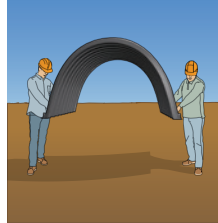
Handling

- Integrated Handles for safe on-site handling
- Sturdy and lightweight for safe transport and placement by 2 people
- Specially designed pallet for trouble free handling
- Maximum stacking density to reduce on-site staging footprint

Integrated Handles



Easy to Handle

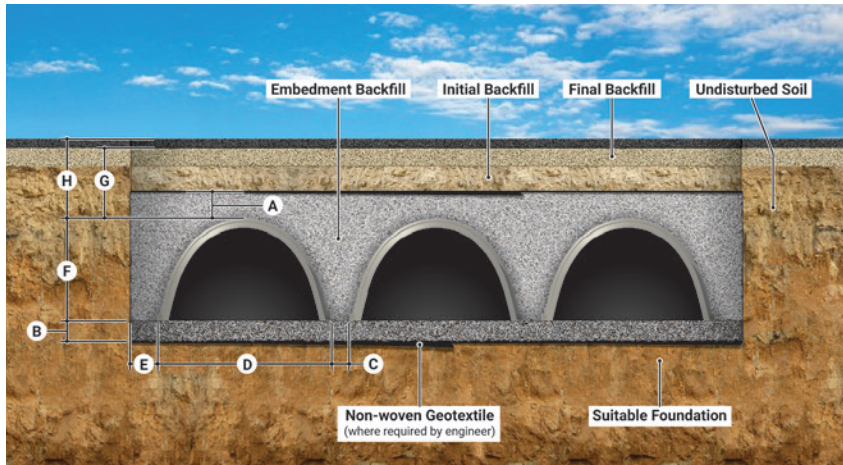


Reinforced Pallet*



* minimum 72" forks required

Installation Specifications



	HS290	HS180	HS75	HS31
A minimum backfill above chamber	12"	12"	6"	6"
B minimum bedding	9"	9"	6"	6"
C chamber spacing	8.5"	5"	6"	3"
D chamber width	100.5"	77.8"	51"	34"
E backfill at edge of system	12"	12"	12"	12"
F chamber height	59.5"	45.5"	29.7"	16"
G minimum cover	24"	18"	18"	16"
H maximum burial depth	8'	8'	8'	8'

Mobile Resources

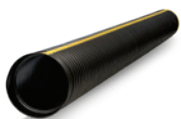
More about HydroStor®

- Installation Videos
- Installation Documents
- Specifications
- Technical Notes

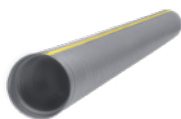


Prinsco products are fully supported by our engineering team and are designed, manufactured and tested to meet/exceed the high performance needs of the construction market. Prinsco's engineering, quality control and production teams are committed to a continuous process of innovation and product development. We are focused on current and future market needs centered around environmental sustainability, water quality, stormwater management and performance advancement.

COLLECTION & CONVEYANCE



GOLFLO®
AASHTO Dual-Wall Pipe



GOLDPRO STORM®
Dual-Wall HP Polypropylene

TREATMENT

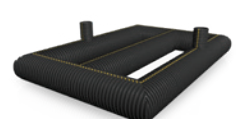


STORMWATER QUALITY
Engineered Water Treatment

STORAGE



HYDROSTOR®
Arched Chambers



UNDERGROUND DETENTION
Customized Pipe Systems