

NOTES:

- SWQU SHOWN IS PRINSCO'S STANDARD SWQU. CUSTOM UNITS ARE AVAILABLE, PLEASE CONTACT YOU PRINSCO SALES REPRESENTATIVE FOR MORE INFORMATION.

THIS DETAIL DEPICTS RECOMMENDED INSTALLATION PRACTICES AND IS NOT INTENDED TO SUPERSEDE ANY NATIONAL, STATE OR LOCAL SPECIFICATIONS. PRINSCO BEARS NO RESPONSIBILITY FOR ANY ALTERATIONS, REVISION AND/OR DEVIATION FROM THIS STANDARD DETAIL. PRINSCO HAS NOT PERFORMED ANY ENGINEERING OR DESIGN SERVICE FOR THIS PROJECT. THE DESIGN ENGINEER SHALL REVIEW THESE DETAILS PRIOR TO CONSTRUCTION TO VERIFY SUITABILITY. © PRINSCO, INC.



1717 16TH ST. NE 3RD FLOOR WILLMAR, MN 56201

SWQU 40FT BYPASS DETAIL

DRAWN BY: RWM

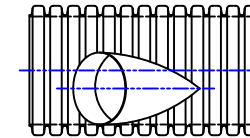
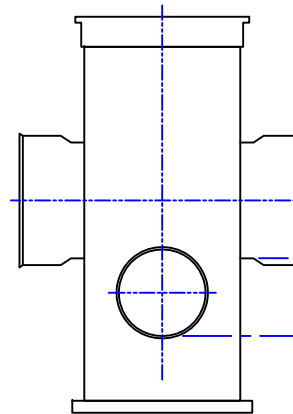
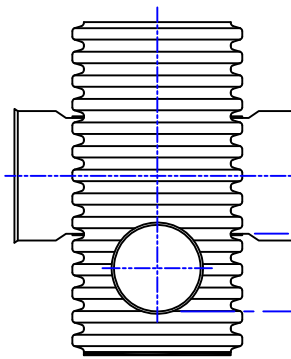
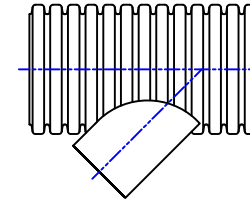
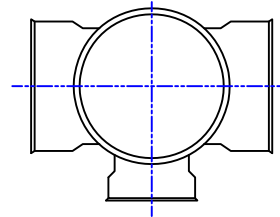
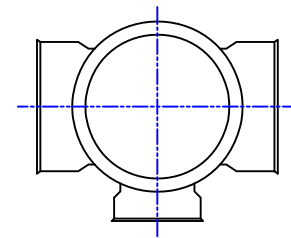
DRAWING NUMBER:

DATE: 01/05/2011

D-4-103

SCALE: NTS

SHEET: 1 OF 2



BYPASS FLOW-LINE

BYPASS FLOW-LINE

SWQU INLET FLOW-LINE

SWQU INLET FLOW-LINE

SWQU OUTLET FLOW-LINE

**HDPE INLET STRUCTURE
FABRICATED SUMP BASIN
(OPTION I)**

SCALE: NTS

**PCV INLET STRUCTURE
DRAIN BASIN (OPTION II)**

SCALE: NTS

**HDPE OUTLET STRUCTURE
FABRICATED SUMP BASIN**

SCALE: NTS

NOTES:

- BYPASS STRUCTURE DIMENSIONS WILL VARY BY SWQU DESIGN. PLEASE CONTACT YOUR PRINSCO SALES REPRESENTATIVE FORM AVAILABLE OPTION.
- OTHER STRUCTURES MAY BE USED.

THIS DETAIL DEPICTS RECOMMENDED INSTALLATION PRACTICES AND IS NOT INTENDED TO SUPERSEDE ANY NATIONAL, STATE OR LOCAL SPECIFICATIONS. PRINSCO BEARS NO RESPONSIBILITY FOR ANY ALTERATIONS, REVISION AND/OR DEVIATION FROM THIS STANDARD DETAIL. PRINSCO HAS NOT PERFORMED ANY ENGINEERING OR DESIGN SERVICE FOR THIS PROJECT. THE DESIGN ENGINEER SHALL REVIEW THESE DETAILS PRIOR TO CONSTRUCTION TO VERIFY SUITABILITY. © PRINSCO, INC.



1717 16TH ST. NE 3RD FLOOR WILLMAR, MN 56201

SWQU 40FT BYPASS DETAIL

DRAWN BY: RWM
DATE: 01/05/2011
SCALE: NTS
SHEET: 2 OF 2

DRAWING NUMBER:

D-4-103