

# AG CATCH BASIN



Water Management / **Outlet**

## Ag Catch Basin

If the grade on your system won't allow for a gravity flow outlet, Prinsco's agricultural catch basin provides the perfect solution. They are built from polymer coated corrugated metal to provide strength and durability.

### Catch Basin Available Configurations

Diameter	Standard Height (ft.)	Material	Catch Basin Features
48"	13'	Polymer-Coated Galvanized Pipe	18" Stub 1' - 3' Vertical Extensions Galvanized Lid with Stand

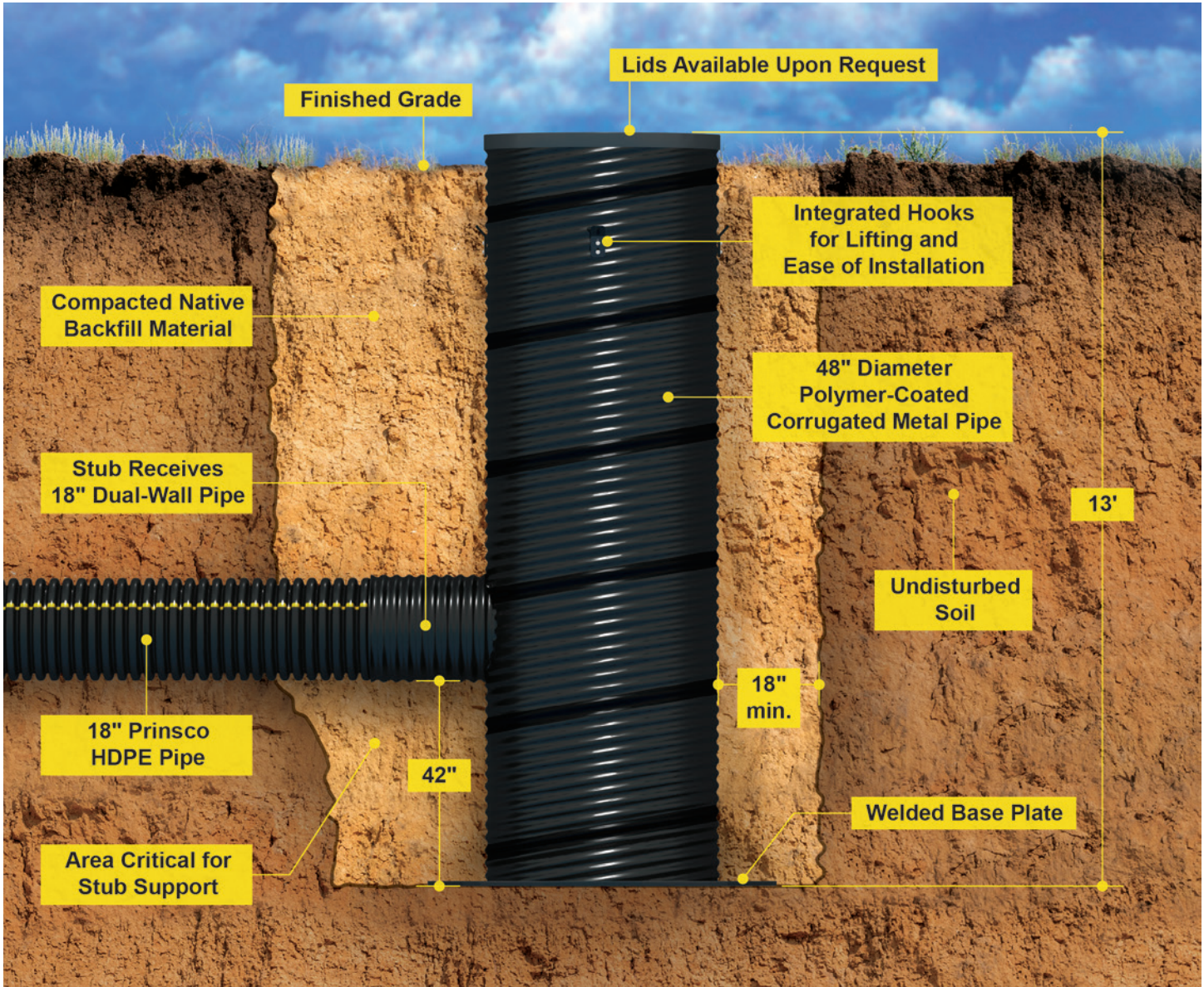
*Custom basins are available. Contact Prinsco for a quote.*

## Features

- Standard size is 13' tall x 48" diameter, providing increased storage volume.
- Galvanized, polymer-coated steel tanks provide increased protection against abrasion & corrosion.
- Basin stub receives 18" Prinsco Goldflo®. Connection is built for strength, and easy to install - no couplers needed. Reducers to smaller diameters are also available.
- Backfill with native soils. No imported material needed, saving you time and money.





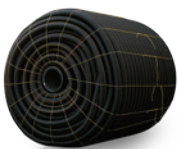


## More about the Ag Catch Basin

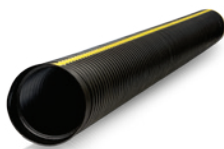
Installation Documents  
Specifications  
Technical Notes



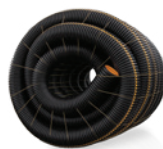
Prinsco products are fully supported by our engineering team and are designed, manufactured and tested to meet/exceed the high performance needs of the construction market. Prinsco's engineering, quality control and production teams are committed to a continuous process of innovation and product development. We are focused on current and future market needs centered around environmental sustainability, water quality, stormwater management and performance advancement.



GOLDLINE®



GOLDFLO®  
DUAL-WALL STICKS



GOLDFLEX®



FITTINGS



CONTROLLED DRAINAGE