



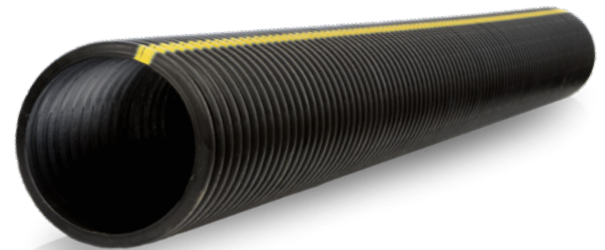
Stormwater Solutions / Collection & Conveyance / **Dual-Wall**

GOLDFLO®

Goldflo® provides unsurpassed performance for stormwater conveyance and management. It is designed and manufactured with state-of-the-art methods ensuring maximum material performance and maximum structural performance.

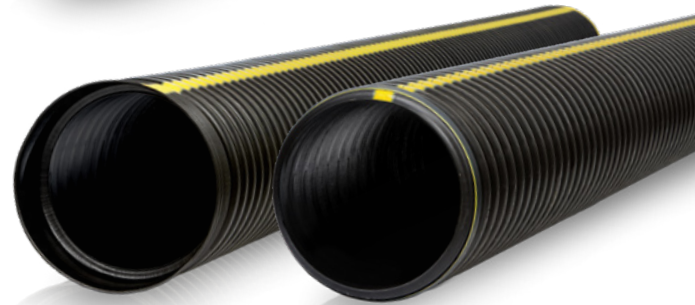
Plain End Dual-Wall

Goldflo plain end dual-wall is a high density polyethylene plastic pipe manufactured to the stringent requirements of AASHTO M294, AASHTO M252 and ASTM F2306, ensuring you receive a quality, high performance product. Goldflo is available with a soil tight joint configuration in 4" - 36".



Integrated Bell & Spigot Dual-Wall

Goldflo with the integrated bell and spigot ends are manufactured to the most stringent requirements of AASHTO M294 or ASTM F2306, along with the ASTM D3212 watertight laboratory test requirements, making it ideal for projects where low cost, high installation efficiency, high product quality, and maximum watertight performance are critical.



Goldflo® Available Configurations

	Diameter(s)	Standard Length (ft.)	Connection	Pipe Features	Material	Standards*
Plain End	4" - 36"	20'	Coupler [†] Soil tight Watertight	Dual-wall Non-perforated Perforated	High Density Polyethylene (HDPE)	AASHTO M294 AASHTO M252 ASTM F2306
Integrated Bell and Spigot	4" - 60"	20'	Gasket Watertight	Dual-wall Non-perforated Perforated	High Density Polyethylene (HDPE)	ASTM F2306 AASHTO M252 AASHTO M294 ASTM F477 ASTM D3212

*Shorter lengths available at some locations. Some configurations may be special order.; † Couplers sold separately.; *See back side for Performance Standards.*

Stormwater Solutions / Collection & Conveyance / Dual-Wall

Features & Benefits

- Manning's "n" value of 0.012 allows for greater flow capacity and reduces sediment or debris build-up
- Full offering of standard and custom fittings to meet your specific needs and reduce field fabrication and costly structures
- Several joining options allow for quick and easy installation, reducing costs while increasing efficiency
- HDPE material is resistant to rusting, corrosion, and deterioration
- Lightweight and easy field manipulation saves time, labor, and allows for the use of smaller equipment while contributing to a safer working environment

Performance

Goldflo® pipe meets the following:

- **ASTM F2306:** Standard Specification for 12" - 60" (300 - 1500 mm) Annular Corrugated Profile-Wall Polyethylene (PE) Pipe and Fittings for Gravity-Flow Storm Sewer and Subsurface Drainage Applications
- **AASHTO M252:** Standard Specification for Corrugated Polyethylene Drainage Pipe, 4" - 10" (100 - 250mm) Diameter
- **AASHTO M294:** Standard Specification for Corrugated Polyethylene Pipe, 12" - 60" (300 - 1500 mm) Diameter
- **ASTM F477:** Standard Specification for Elastomeric Seals (Gaskets) for Joining Plastic Pipe
- **ASTM D3212:** Standard Specification for Joints for Drain and Sewer Plastic Pipes using Flexible Elastomeric Seals

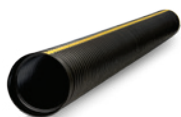
More about Goldflo®

Installation Videos
Installation Documents
Specifications
Technical Notes

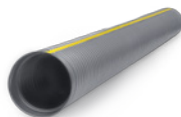


Prinsco products are fully supported by our engineering team and are designed, manufactured and tested to meet/exceed the high performance needs of the construction market. Prinsco's engineering, quality control and production teams are committed to a continuous process of innovation and product development. We are focused on current and future market needs centered around environmental sustainability, water quality, stormwater management and performance advancement.

COLLECTION & CONVEYANCE

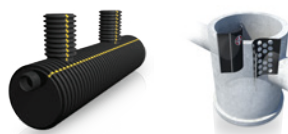


GOLDFLO®
AASHTO Dual-Wall Pipe



GOLDPRO STORM®
Dual-Wall HP Polypropylene

TREATMENT

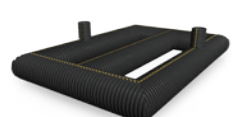


STORMWATER QUALITY
Engineered Water Treatment

STORAGE



HYDROSTOR®
Arched Chambers



UNDERGROUND DETENTION
Customized Pipe Systems