

Introduction

Field couplers are generally necessary to connect pipe to fittings or field cut sections of pipe together. These types of field connections can have varying configurations depending on the level of joint performance required and may be comprised of gasketed bell-bell couplers, split band couplers, or wrap type couplers. Prinsco's field coupling solution, the GOLDLOK coupler, is unique in that a single coupler solution is used regardless of the required level of joint performance. This uniqueness comes from the advanced design where the gasket sealing surface is built into the plastic coupler. The Prinsco GOLDLOK coupler also allows for a simplified installation process because there are no special gasket installation requirements or zip ties, as the design is based on a bell-bell coupling with an integrated gasket.

Installation Instructions

The GOLDLOK coupler includes a built-in rubber gasketed sealing surface providing maximum performance with a simplified installation method. The following description outlines the proper installation steps for the Prinsco GOLDLOK coupler to ensure maximum performance.

Step 1:

Loosen the steel straps supplied on the coupler to allow them to move freely on the coupler. This will allow the bell to expand, if necessary, with pipe insertion. A liberal amount of lubrication* shall be applied to the inside surface of the coupler, specifically in the rubber gasketed area.

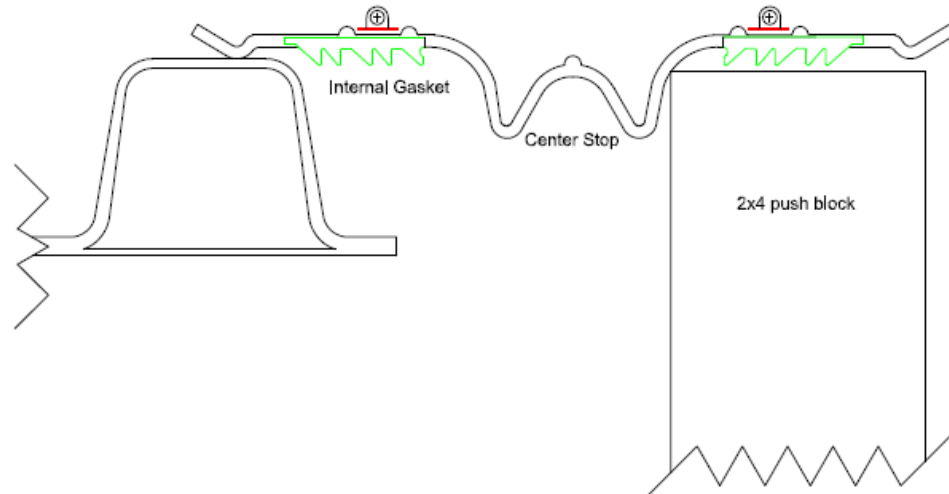


*Either spray or brush on pipe lubricant is acceptable provided it is supplied with the pipe or otherwise approved by Prinsco.

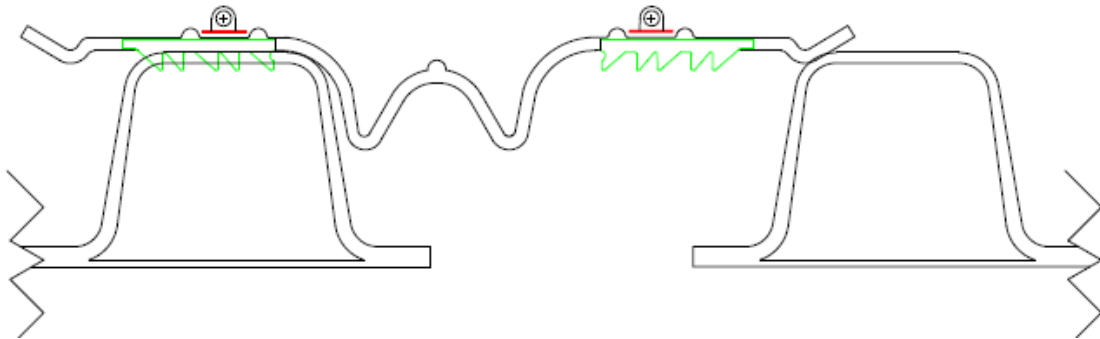
Step 2:

Ideally, the coupler would be installed, above ground, for the first section of pipe or fitting that will be connected. This is typically an easier installation method because the outside diameter of the coupler is larger than the outside of the pipe. If the coupler must be pushed on to the pipe in the trench, the area under the end of the pipe should be excavated to ensure dirt does not enter the coupler.

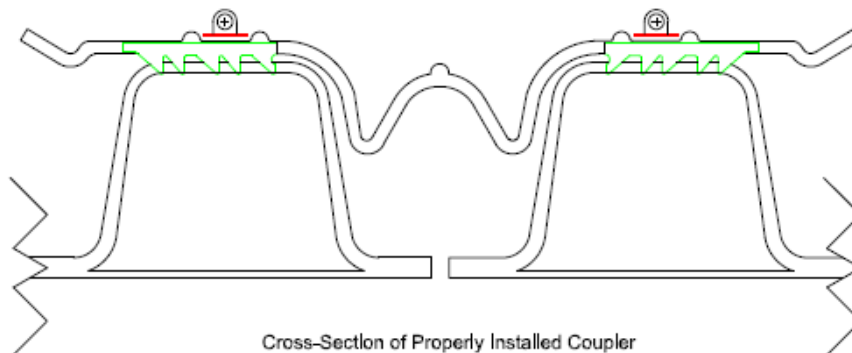
To install the bell onto the pipe, the bell should be aligned with the pipe and physical force applied evenly to the bell. The bell should be pushed onto the pipe until the center stop contacts the pipe. For larger diameters or where extra force is necessary, a spud bar or excavator may be used provided an installation stub or push block is used. The installation stub may be made by cutting a 3" longitudinal section from a scrap piece of pipe while a push block may be made from a block of 2x4 or 4x4 wood cut to a length to seat against the center stop of the coupler, not the exterior. Force may be applied to the push block or installation stub.

**Step 3:**

Tighten reinforcing band located on the assembled end of the coupler. There may be multiple clamps to tighten on the band, depending on the diameter of the coupler. These clamps should be tightened evenly around the pipe to ensure a secure connection. The band should be tightened by hand with a wrench, ratchet, or screwdriver. Be careful not to over tighten the strap. Once the band is tightened, the pipe shall be installed into the opposite end of the coupler following the same steps above.

**Step 4:**

Once the pipe is homed, alignment should be verified and the final reinforcing band shall be tightened as specified in Step 3.



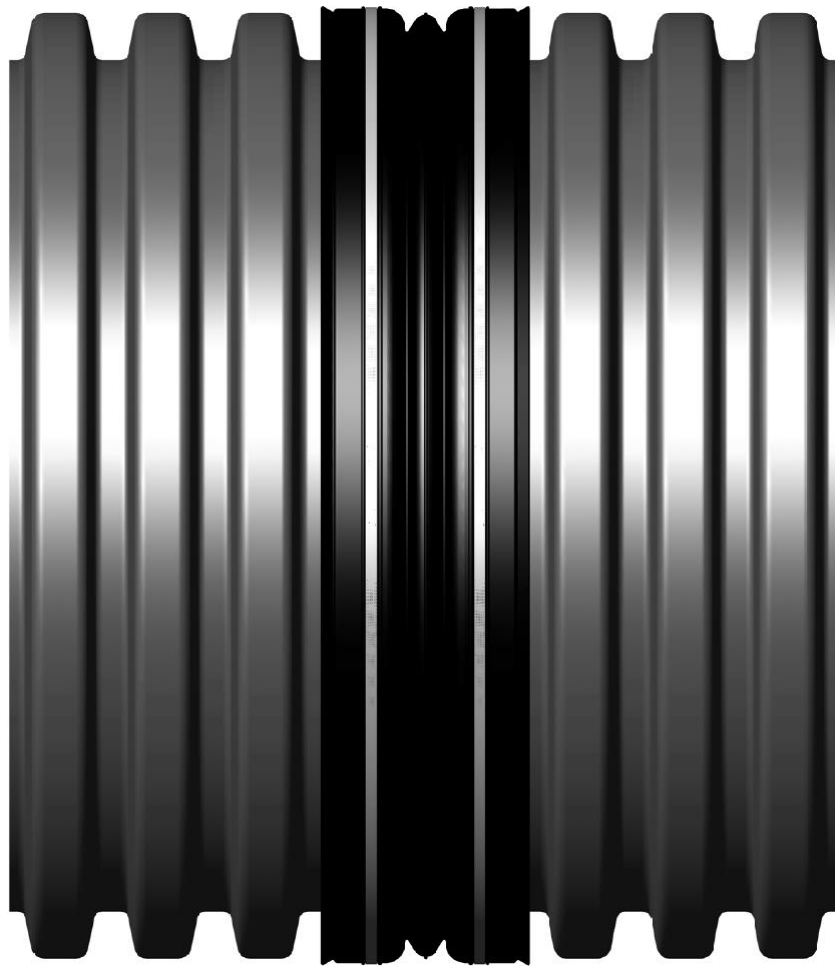


Figure 1. Properly Assembled GOLDLOK Coupler