



PRINSCO | **Storm**
WATER MANAGEMENT SOLUTIONS





Our Values



the **Prinsco** *difference* service led by values

The Prinsco Difference isn't just about service, it's about a way of doing business. As a family-owned company, we operate by our core values of hard work, integrity, relationships, and humility. This means we go beyond transactions to build genuine partnerships with our customers. We believe in working tirelessly, acting with honesty, fostering strong connections, and approaching every challenge with a willingness to learn. It's this foundation that allows us to provide exceptional service and solutions you can trust.

Corporate Headquarters

1717 16th Street NE
Willmar, MN 56201

Phone: 320.222.6800

Toll Free: 800.992.1725

Fax: 320.222.6820

prinsco.com



Chamber

HydroStor® Chambers..... 4-5

Dual-Wall

Goldpro Storm®6
 Goldflo®7

Single-Wall

Goldline®8

Storage / Retention | Detention

Pipe Systems.....9

Fittings

Fabricated.....10
 Molded.....11

General

Accessories12

Performance Standards

ASTM and AASHTO Standards13

Shipping

Our Locations14
 Prinsco Delivers14
 Shipping Quantities15



Stormwater Solutions / Chamber



Prinsco offers four sizes of high-performance HydroStor® stormwater chambers designed for site-specific applications such as parking lots, roadways and commercial developments. HydroStor chambers provide an environmentally sustainable underground water management system that optimizes groundwater recharge and saves valuable land resources. Our four storm chamber models are designed to fit almost any type of performance specifications, project footprint and construction budget.

	HS290	HS180	HS75	HS31
				
Installed Storage per Chamber*	164.5 ft ³ /chamber	176 ft ³ /chamber	75 ft ³ /chamber	29.6 ft ³ /chamber
Height	59.5"	45.5"	29.7"	16"
Width	100.5"	77.8"	51"	34"
Unit Length	51.8"	88.7"	87.1"	87.3"
Installed Length	48.3"	85.3"	84.9"	85.5"
Weight	112 lbs	122 lbs	69 lbs	34 lbs
Chambers/Pallet	10	19	33	90
Material	Polypropylene	Polypropylene	Polypropylene	Polypropylene
Mfg. Process	Injection Molding	Injection Molding	Injection Molding	Injection Molding
Special Features	Integrated Handles	Integrated Handles	Integrated Handles	Integrated Handles
ASTM Standards**	Meets or Exceeds	Meets or Exceeds	Meets or Exceeds	Meets or Exceeds

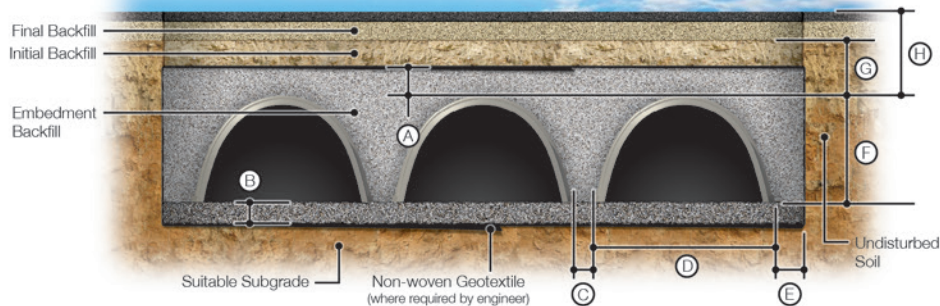
* Assuming 40% void volume of backfill with 9" bedding and 12" cover for HS290 and HS180, and 6" bedding and 6" cover for HS75 and HS31. ** See page 13 for Performance Standards.

Available End Cap Sizes

	HS290 End Cap	HS180 End Cap	HS75 End Cap	HS31 End Cap
Installed Storage Capacity*	114.46 ft ³ /end cap	44.8 ft ³ /end cap	14.5 ft ³ /end cap	4.89 ft ³ /end cap
Height	59.3"	44.7"	30.2"	16.3"
Width	94"	78.5"	51"	34"
Unit Length	35"	24"	11.9"	8.0"
Installed Length	32.4"	22.1"	10.4"	6.9"
Weight	79.9 lbs	52 lbs	13.2 lbs	3.8 lbs

* Assuming 40% void volume of backfill with 9" bedding and 12" cover for HS290 and HS180, and 6" bedding and 6" cover for HS75 and HS31.

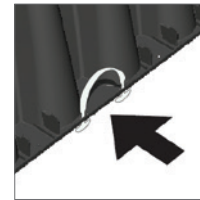
Installation Specifications



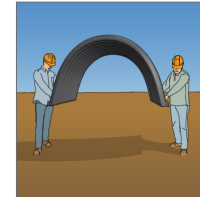
	HS290	HS180	HS75	HS31
A - Min. Backfill Above Chamber	12"	12"	6"	6"
B - Minimum Bedding	9"	9"	6"	6"
C - Chamber Spacing	8.5"	5"	6"	3"
D - Chamber Width	100.5"	77.8"	51"	34"
E - Backfill at Edge of System	12"	12"	12"	12"
F - Chamber Height	59.5"	45.5"	29.7"	16"
G - Minimum Cover	24"	18"	18"	16"
H - Maximum Burial Depth	8'	8'	8'	8'

Handling

Integrated Handles



Easy to Handle



Reinforced Pallet*



* Minimum 72" forks required

More about HydroStor®

- Installation Videos
- Installation Documents
- Specifications
- Technical Notes



Features & Benefits

- Minimal footprint
- Integrated handles for safe on-site handling
- Meets or exceeds ASTM 2418 product standards and ASTM F2787 design standards*
- Meets AASHTO H20 live load and HL93 design load requirements*

* See page 13 for Performance Standards.

Custom Layouts

Princo offers 48-hour turnaround on site-specific stormwater system layouts. Rely on real people to talk through your project specifications, recommend solutions, and deliver plans.

Contact: appeng@princo.com

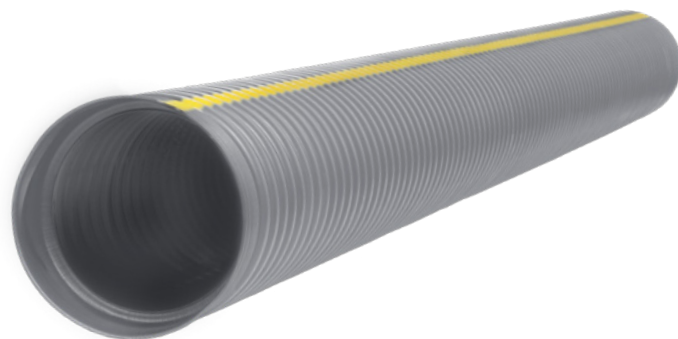


Stormwater Solutions / Dual-Wall

GOLDPRO STORM®

Goldpro Storm® is a dual-wall corrugated polypropylene pipe. The combination of our engineered materials and watertight joint design result in a high-performance pipe solution that is ideal for critical stormwater management applications.

Goldpro Storm is perfect for projects where structural integrity, joint performance, installation efficiency, and overall quality are critical to your success.



Applications

- Storm Sewers
- Highway Drainage
- Industrial Applications
- Ditch Enclosures
- Other Critical Drainage Applications

Contact your Prinsco representative regarding application suitability questions.

More about Goldpro Storm®

Installation Videos
Installation Documents
Specifications
Technical Notes



Goldpro Storm® Available Configurations

	Diameter(s)	Standard Length (ft.)	Connection	Pipe Features	Material	Standards*
Integrated Bell and Spigot	12" - 60"	20'	Gasket Watertight	Dual-wall Non-perforated Perforated	Polypropylene (PP)	ASTM F2881 AASHTO M330 ASTM D3212 ASTM F477

Shorter lengths may be available at some locations. * See page 13 for Performance Standards.



Dual-Wall
GOLDFLO®

Stormwater Solutions / Dual-Wall

GOLDFLO®

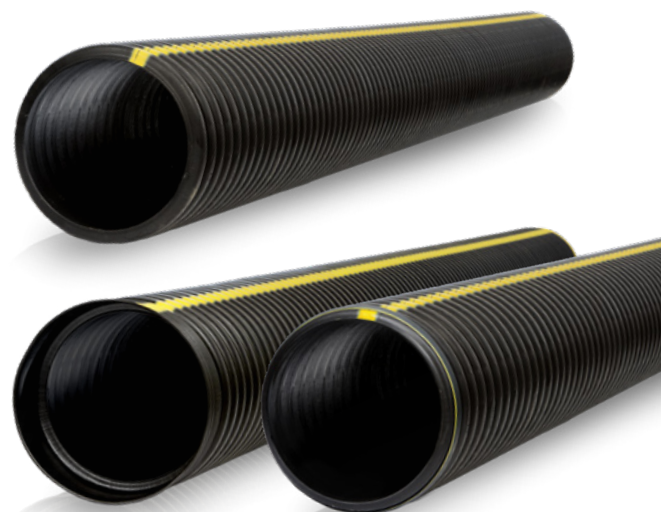
Goldflo® provides unsurpassed performance for stormwater conveyance and management. It is designed and manufactured with state-of-the-art methods ensuring maximum material performance and structural performance.

Plain End Dual-Wall

Goldflo plain end dual-wall is a high density polyethylene plastic pipe manufactured to the stringent requirements of AASHTO M294, AASHTO M252, and ASTM F2306, ensuring you receive a quality, high-performance product.

Integrated Bell & Spigot Dual-Wall

Goldflo with the integrated bell and spigot ends are manufactured to the most stringent requirements of AASHTO M294 or ASTM F2306, along with the ASTM D3212 watertight laboratory test requirements, making it ideal for projects where low cost, high installation efficiency, high product quality, and maximum watertight performance are critical.



More about Goldflo®
 Installation Videos
 Installation Documents
 Specifications
 Technical Notes



Goldflo® Available Configurations

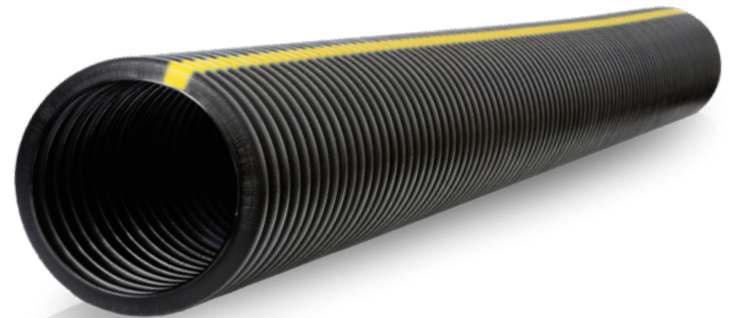
	Diameter(s)	Standard Length (ft.)	Connection	Pipe Features	Material	Standards*
Integrated Bell and Spigot	4" - 60"	20'	Gasket Watertight	Dual-wall Non-perforated Perforated	High Density Polyethylene (HDPE)	ASTM F2306 AASHTO M252 AASHTO M294 ASTM F477 ASTM D3212
Plain End	4" - 36"	20'	Coupler† Soil tight Watertight	Dual-wall Non-perforated Perforated	High Density Polyethylene (HDPE)	AASHTO M294 AASHTO M252 ASTM F2306

Shorter lengths available at some locations. Some configurations may be special order. † Couplers sold separately. * See page 13 for Performance Standards.

Stormwater Solutions / **Single-Wall**

GOLDLINE®

Goldline® is a soil-tight, high density polyethylene plastic pipe that is an essential component of agricultural water management systems. It is available in mini rolls, maxi coils, and sticks measuring 10' or 20'. Goldline is also available in perforated or non-perforated configurations and can be supplied with high-performance geotextile fabric.



Features & Benefits

- Easy to handle and maneuver for efficient installation
- Available in perforated and non-perforated configurations
- Available in coils or sticks

More about Goldline®

- Installation Videos
- Installation Documents
- Specifications
- Technical Notes



Goldline® Single-Wall Sticks Available Configurations

	Diameter(s)	Standard Length (ft.)	Material	Standards*
Perforated	3" - 15"	10', 20'	High Density Polyethylene (HDPE)	ASTM F667 AASHTO M252 AASHTO M294
Non-Perforated	3" - 15"	10', 20'	High Density Polyethylene (HDPE)	ASTM F667 AASHTO M252 AASHTO M294
Non-Perforated Lock-Fast Coupler	8" - 15"	10'	High Density Polyethylene (HDPE)	ASTM F667 AASHTO M252 AASHTO M294
with Knitted Polyester Wrap <small>Geotextile fabric specifications are available upon request.</small>	8" - 15"	20' <small>Special Order Items.</small>	High Density Polyethylene (HDPE)	ASTM F667 AASHTO M252 AASHTO M294

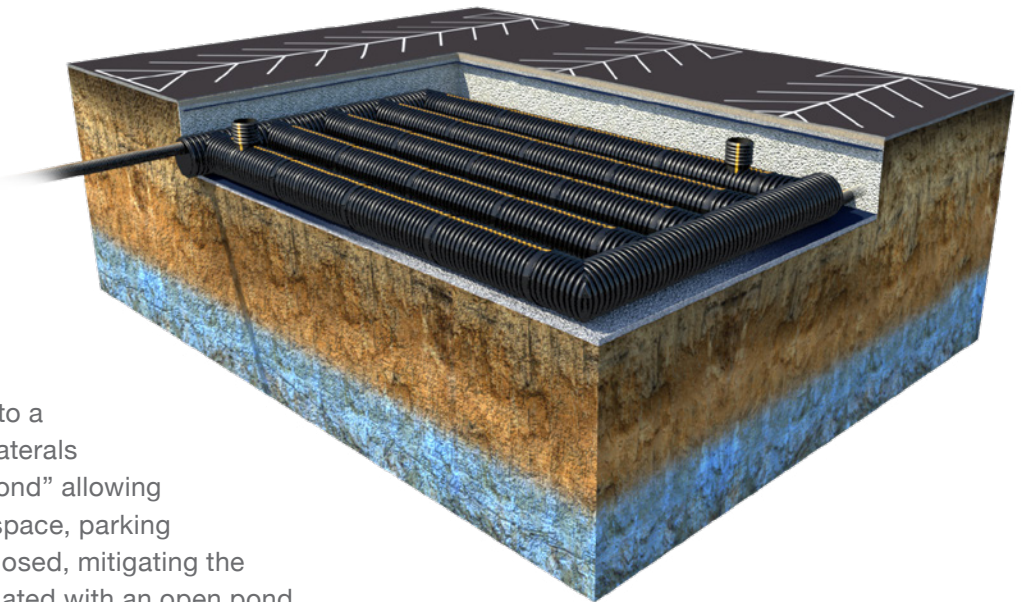
* See page 13 for Performance Standards.



Stormwater Solutions / Pipe

Pipe Systems

Prinsco's underground detention systems are completely customizable to your unique project and can be designed with the support of our Prinsco engineering team. Our detention systems can be perforated, allowing for percolation into the soil for groundwater recharge, or solid, containing the storm event for a controlled release into a municipal storm sewer. Headers and laterals combine to create an "underground pond" allowing valuable land to be utilized for green-space, parking lots, and more. Prinsco systems are closed, mitigating the health risks and safety hazards associated with an open pond.



Features & Benefits

Prinsco's underground detention systems provide a cost-effective, highly customizable way to store stormwater.

- Manufactured out of strong, durable, HDPE pipe and fittings
- Customizable layout designs can be tailored to specific job site constraints
- Proven performance under H-20 and H-25 loading
- HDPE available up to 60" in diameter
- Optional perforations allow stone void volume used as storage
- Optional risers allow man-entry and easy cleanout
- Seamless header components and custom fabricated fitting available
- Detention tools are available for calculating the amount of pipe needed for desired storage (including perforated systems)

More Goldflo® and Detention/Retention systems

Installation Videos
Installation Documents
Specifications
Technical Notes





Engineered Solutions: Prinsco's Fabricated Fittings

Prinsco offers a comprehensive line of fabricated fittings designed to meet the demands of diverse stormwater management projects. Available in both Goldflo® HDPE and high-performance Goldpro Storm® Polypropylene, these fittings provide long-term performance and durability.

Sizes

Fittings are available to accommodate pipe diameters from 4" to 60" (sizes vary depending on the material needed).

Selection

Choose from standard configurations, including tees, wyes, elbows, and end caps, or work with our team to create custom fittings for unique project needs.

Quality

Our experienced fabrication teams utilize precise manufacturing processes to ensure the quality and consistency of every fitting.

Lead Times

Prinsco is dedicated to meeting project deadlines with timely delivery.





Fittings
MOLDED

Efficient and Reliable: Prinsco Molded Fittings

Prinsco's molded fittings provide effective solutions for a variety of stormwater management applications. These fittings are available in a range of sizes and configurations to accommodate diverse project needs.

Sizes

Fittings are available for pipe diameters from 4" to 12" (*size availability may vary by fitting type*).

Selection

Choose from a comprehensive selection of fittings, including tees, wyes, couplers, reducers, and more.

Quality

Injection molding ensures consistent quality and dimensional accuracy for reliable performance.



Accessories Built for Stormwater Management

Prinsco offers a wide range of stormwater accessories designed to enhance the functionality and performance of your system. From catch basins to EZ-tees, we provide the essential components you need for a complete and efficient solution.

PVC Catch Basins Durable and efficient catch basins for collecting and directing stormwater runoff. Available in various sizes to suit your needs.

EZ-Tees Simplify connection points with our easy-to-install EZ-tees.

Gaskets Ensure secure and leak-proof connections with our high-quality gaskets.

Culvert Aprons Protect your culvert inlets and outlets from erosion with our durable culvert aprons.
...and more!

Select Prinsco accessories can be customized to meet the specific requirements of your project.



Industry and Performance Standards

ASTM and AASHTO Standards

HydroStor® Chambers

ASTM F2418: Standard Specification for Polypropylene (PP) Corrugated Wall Stormwater Collection Chambers

ASTM F2787: Standard Practice for Structural Design of Thermoplastic Corrugated Wall Stormwater Collection Chambers

ASTM D4101: Standard Specification for Polypropylene Injection and Extrusion Materials

Goldpro Storm® (PP) Dual-Wall Pipe

ASTM F2881: Standard Specification for 12" to 60" (300mm to 1500mm) Polypropylene (PP) Dual-Wall Pipe and Fittings for Non-Pressure Storm Sewer Applications

AASHTO M330: Standard Specification for Polypropylene Pipe, 12" to 60" (300mm to 1500mm) Diameter

ASTM D3212: Standard Specification for Joints for Drain and Sewer Plastic Pipes using Flexible Elastomeric Seals

ASTM F477: Standard Specification for Elastomeric Seals (Gaskets) for Joining Plastic Pipe

Goldflo® (HDPE) Dual-Wall Pipe

Plain End Dual-Wall

AASHTO M294: Standard Specification for Corrugated Polyethylene Pipe, 12" to 60" (300mm to 1500mm) Diameter

AASHTO M252: Standard Specification for Corrugated Polyethylene Drainage Pipe

ASTM F2306: Standard Specification for 12" to 60" (300mm to 1500mm) Annular Corrugated Profile-Wall Polyethylene (PE) Pipe and Fittings for Gravity-Flow Storm Sewer and Subsurface Drainage Applications

Integrated Bell & Spigot Dual-Wall

AASHTO M294: Standard Specification for Corrugated Polyethylene Pipe, 12" to 60" (300mm to 1500mm) Diameter

ASTM F477: Standard Specification for Elastomeric Seals (Gaskets) for Joining Plastic Pipe

ASTM F2306: Standard Specification for 12" to 60" (300mm to 1500mm) Annular Corrugated Profile-Wall Polyethylene (PE) Pipe and Fittings for Gravity-Flow Storm Sewer and Subsurface Drainage Applications

ASTM D3212: Standard Specification for Joints for Drain and Sewer Plastic Pipes using Flexible Elastomeric Seals

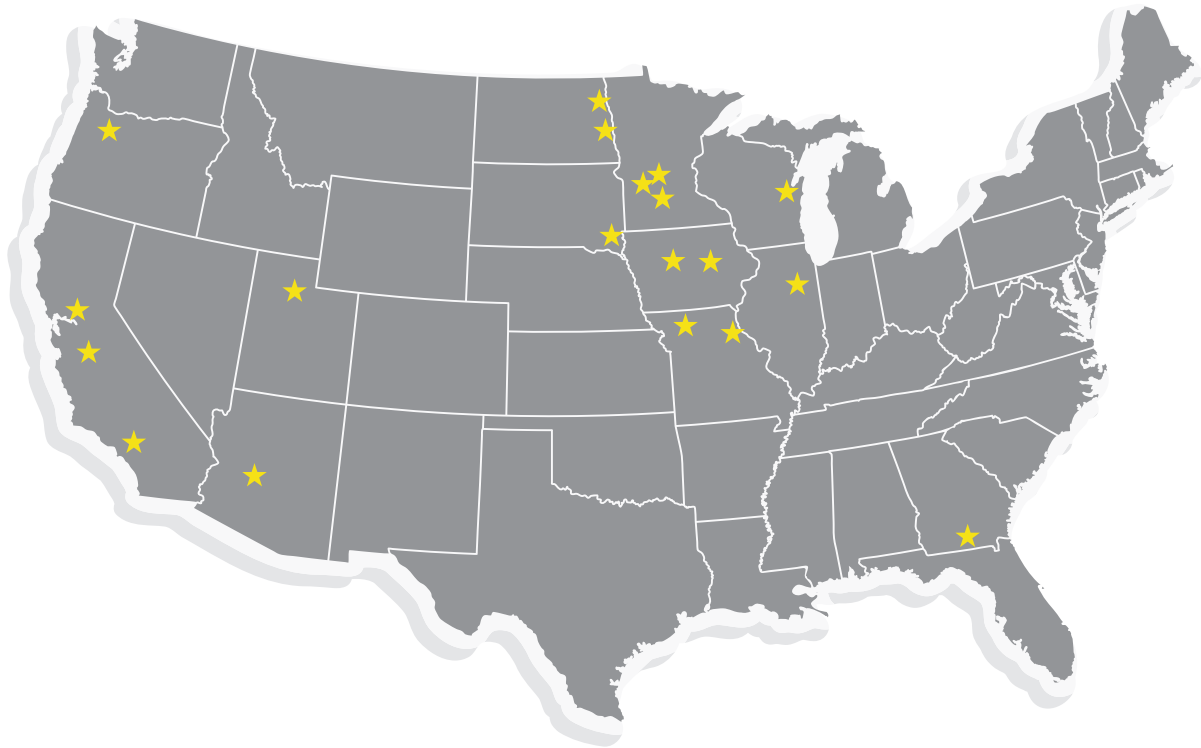
Goldline® (HDPE) Single-Wall Pipe

ASTM F 667: Standard Specification for Corrugated Polyethylene Pipe and Fittings

AASHTO M 252 TYPE C: Standard Specification for Corrugated Polyethylene Drainage Pipe

AASHTO M 294 TYPE C: Standard Specification for Corrugated Polyethylene Pipe, 12" to 60" (300mm to 1500mm) Diameter

Shipping



Our Locations

At Prinsco, we are committed to prioritizing people to build long-lasting relationships. Our network of 21 strategically positioned locations, including our Research Tech Center and Engineering Tech Center, ensure we can offer personalized technical support, service, and timely delivery.

Prinsco delivers quality from manufacturing right down to the service we provide on delivery.

The pipe charts on the following page give approximate full-load quantities for a Prinsco 53' trailer. The quantities may vary according to the length of the trailer or if common carriers are employed for shipment. In mixed-size load situations, calculate the percentage of the load that each size will constitute. Then, total the percentages to determine the extent of the load. If pipe lengths are shipped, small diameter pipe may be nested inside the larger sizes. This will maximize load quantities and reduce freight costs. The charts are strictly “rule of thumb” to give you a general idea of load quantities. For more specific figures, call our Customer Service Department.

The HydroStor® charts give approximate full-load quantities when shipping the chambers and end caps for a Prinsco 48' and 53' trailer.

Shipping Quantities

Goldline® Single-Wall Pipe

Diameter	Unit	*Units Per Load	Footage
3"	Micro	260	26,000
	Mini	88	26,400
	Maxi	6	31,800
4"	Micro	170	17,000
	Mini	76	19,000
	Maxi	6	18,000
5"	Mini	76	12,540
	Maxi	6	13,800
6"	Mini	76	7,600
	Maxi	6	8,700
8"	20' Lengths	266	5,320
	Maxi	6	4,950
10"	20' Lengths	180	3,600
	Maxi	6	3,150
12"	20' Lengths	120	2,400
	Maxi	6	1,920
15"	20' Lengths	70	1,400

* Units per load may vary by state.

Goldflo® Dual-Wall Pipe

Diameter	Unit	*Units Per Load	Footage
12"	10' Lengths	225	2,250
	20' Lengths	120	2,400
15"	10' Lengths	155	1,550
	20' Lengths	80	1,600
18"	10' Lengths	92	1,012
	20' Lengths	48	960
24"	10' Lengths	57	627
	20' Lengths	30	600
30"	12' Lengths	33	363
	20' Lengths	18	360
36"	12' Lengths	22	242
	20' Lengths	12	240
42"	12' Lengths	16	176
	20' Lengths	8	160
48"	12' Lengths	11	121
	20' Lengths	6	120
60"	12' Lengths	7	77
	20' Lengths	4	80

Nesting/telescoping: All sizes through 36" will nest in the next larger size.

Fittings: Many of our fittings and accessories are packed in bags or bundles.

* Units per load may vary by state.

HydroStor® Chambers

48' Trailer

	HS31 Chamber	HS31 End Cap	HS75 Chamber	HS75 End Cap	HS180 Chamber	HS180 End Cap	HS290 Chamber	HS290 End Cap
Delivery	Flatbed	Dry Van	Flatbed	Dry Van	Flatbed	Dry Van	Flatbed	Dry Van
# Pallets	8 Pallets	20 Pallets	11 Pallets	20 Pallets	7 Pallets	10 Pallets	10 Pallets	7 Pallets
# Items	720 Chambers	1,200 End Caps	363 Chambers	400 End Caps	133 Chambers	120 End Caps	100 Chambers	70 End Caps

53' Trailer

	HS31 Chamber	HS31 End Cap	HS75 Chamber	HS75 End Cap	HS180 Chamber	HS180 End Cap	HS290 Chamber	HS290 End Cap
Delivery	Flatbed	Dry Van	Flatbed	Dry Van	Flatbed	Dry Van	Flatbed	Dry Van
# Pallets	9 Pallets	22 Pallets	12 Pallets	22 Pallets	8 Pallets	12 Pallets	11 Pallets	8 Pallets
# Items	810 Chambers	1,320 End Caps	396 Chambers	440 End Caps	152 Chambers	144 End Caps	110 Chambers	80 End Caps



the
Prinsco
difference
service led by values



prinsco.com

800.992.1725