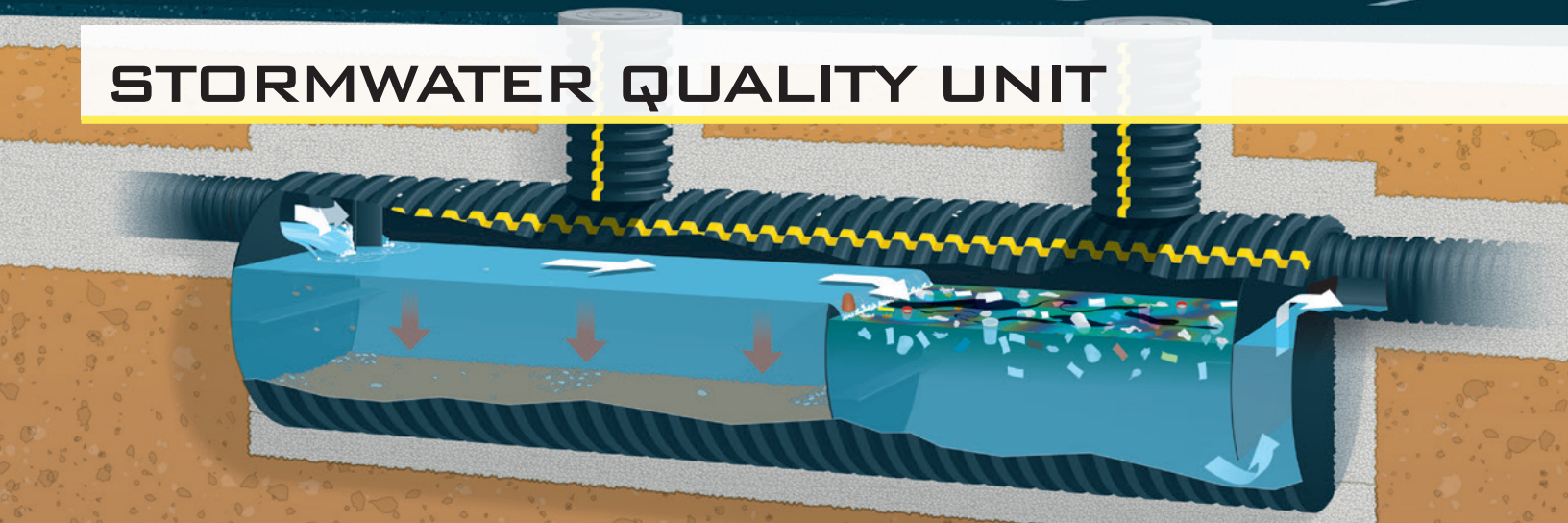


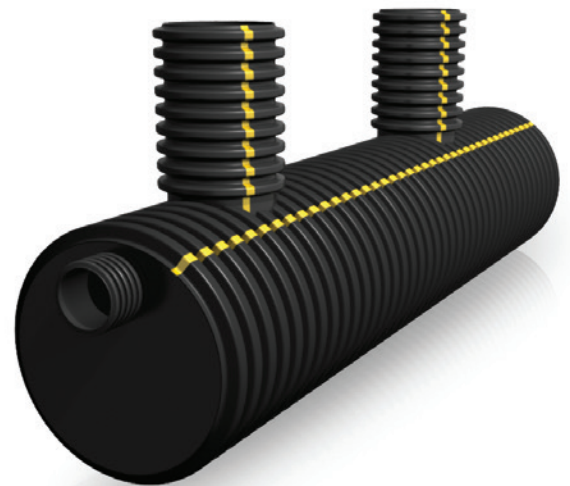
STORMWATER QUALITY UNIT



STORMWATER SOLUTIONS / TREATMENT / STORMWATER QUALITY

STORMWATER QUALITY UNIT

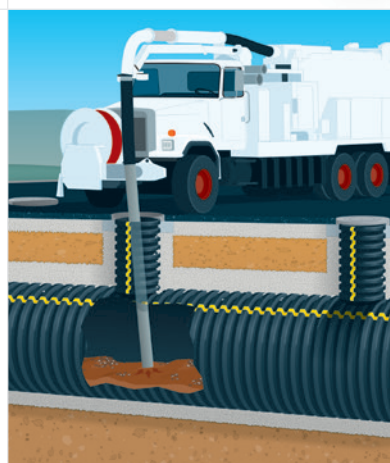
As part of Prinsco's water management product portfolio, the Prinsco Stormwater Quality Unit (SWQU) is designed to treat stormwater to remove debris collected in runoff including trash, sediment, oils, and other suspended solids. The Prinsco SWQU offers an extremely cost-effective alternative to heavier reinforced concrete units and can be installed quicker with smaller equipment, allowing further cost savings. Prinsco offers standard units to meet common project criteria, however, we can assist you in the sizing of a custom SWQU to most cost effectively meet your performance requirements.



Performance

Prinsco's Stormwater Quality Units meet the following:

- **ASTM F 2306:** Standard Specification for 12" - 60" (300 - 1500 mm) Annular Corrugated Profile-Wall Polyethylene (PE) Pipe and Fittings for Gravity-Flow Storm Sewer and Subsurface Drainage Applications
- **AASHTO M 252:** Standard Specification for Corrugated Polyethylene Drainage Pipe
- **AASHTO M 294:** Standard Specification for Corrugated Polyethylene Pipe, 300 - 1500 mm Diameter
- **ASTM F 477:** Standard Specification for Elastomeric Seals (Gaskets) for Joining Plastic Pipe
- **ASTM D 3212:** Standard Specification for Joints for Drain and Sewer Plastic Pipes using Flexible Elastomeric Seals



Applications

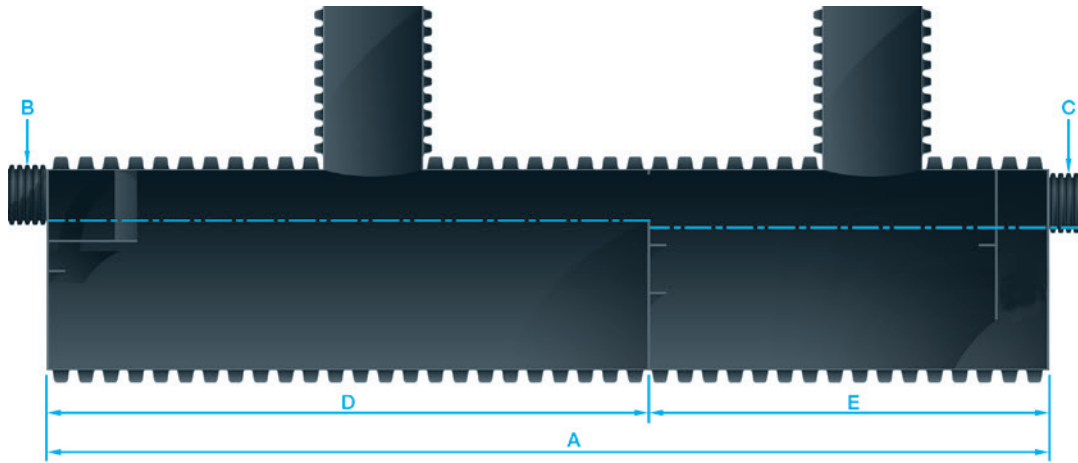
- Parking Lots
- Gas Stations
- Industrial Sites
- Parking Garages
- Detention Systems
- Water Re-use Facilities (non-potable)

** Contact your Prinsco representative regarding application suitability questions.*



Green Fact:

Litter can reach waterways through the stormwater system. A stormwater quality unit can prevent the majority of floating and suspended debris from reaching waterways.



Available Sizes

Product Name	SWQU Diameter	SWQU Length (A), ft	Sediment Chamber Storage Volume ft ³	Floatable Chamber Storage Volume ft ³	Total Storage Volume ft ³	Stub Diameter (B)(C)	Sediment Chamber Length (D), in.	Floatable Chamber Length (E), in.	Max Treated Flow Rate @ 140 Sieve Size (CFS)	Max Treated Flow Rate @ 200 Sieve Size (CFS)
WQU3620	36"	20'	64.2	32.7	96.9	10"	147"	75"	1.50	0.74
WQU3640	36"	40'	132.7	68.1	200.8	10"	304"	156"	3.08	1.54
WQU4220	42"	20'	86.6	41.8	128.4	12"	147"	71"	1.77	0.88
WQU4240	42"	40'	179.0	88.9	267.9	12"	304"	151"	3.66	1.83
WQU4820	48"	20'	119.3	57.6	176.9	12"	147"	71"	2.31	1.15
WQU4840	48"	40'	246.8	122.6	369.4	12"	304"	151"	4.77	2.39
WQU6020	60"	20'	188.9	93.1	282	15"	144"	71"	3.00	1.50
WQU6040	60"	40'	397.5	192.8	590.3	15"	303"	147"	6.31	3.15

MOBILE RESOURCES



More about Stormwater Quality Unit

- Installation Videos
- Installation Documents
- Specifications
- Technical Notes

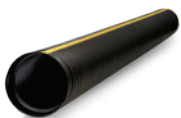


Prinsco.com/swqu-resources

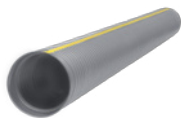
ENGINEERED WITH INTEGRITY

Prinsco products are fully supported by our engineering team and are designed, manufactured and tested to meet/exceed the high performance needs of the construction market. Prinsco's engineering, quality control and production teams are committed to a continuous process of innovation, product development and quality improvement. We are focused on current and future market needs centered around environmental sustainability, water quality, stormwater management and performance advancement.

COLLECTION & CONVEYANCE

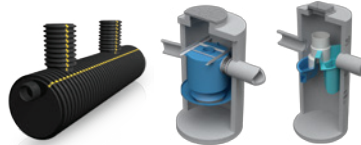


GOLDFLO WT[®]
AASHTO Dual-Wall Pipe



GOLDPRO STORM[™]
Dual-Wall HP Polypropylene

TREATMENT

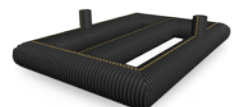


STORMWATER QUALITY
Engineered Water Treatment

STORAGE



HYDROSTOR[™]
Arched Chambers



UNDERGROUND DETENTION
Customized Pipe Systems