



STORMWATER SOLUTIONS / STORAGE / CHAMBERS

HydroStor™

Prinsco offers four sizes of high-performance HydroStor™ stormwater chambers designed for site-specific applications such as parking lots, roadways and commercial developments. HydroStor chambers provide an environmentally sustainable underground water management system that optimizes groundwater recharge and saves valuable land resources. Our four storm chamber models are designed to fit almost any type of performance specifications, project footprint and construction budget.



	HS290	HS180	HS75	HS31
Installed Storage Capacity*	164 ft ³ /chamber	180 ft ³ /chamber	75 ft ³ /chamber	31 ft ³ /chamber
Height	59.5"	45.5"	30"	16"
Width	100.5"	77.8"	51"	34"
Unit Length	51.8"	88.7"	85.4"	87.8"
Installed Length	48.3"	85.3"	84.9"	85.4"
Weight	125 lbs	127 lbs	70 lbs	32 lbs
Chambers/Pallet	10	17	33	45
Material	Polypropylene	Polypropylene	Polypropylene	Polypropylene
Mfg. Process	Injection Molding	Injection Molding	Injection Molding	Injection Molding
Special Features	Integrated Handle	Integrated Handle	Integrated Handles	Low Profile Chamber
ASTM Standards	Meets or Exceeds	Meets or Exceeds	Meets or Exceeds	Meets or Exceeds

* Assuming 40% void volume of backfill with 9" bedding & 12" cover for HS290 and HS180, and 6" bedding & 6" cover for HS75 and HS31

Performance

- High performance polypropylene material
- Meets or exceeds **ASTM F2418** product standard & **ASTM F2787** design standard
- Meets **AASHTO H20** live load & **HL93** design load requirements
- Advanced injection molding technology for maximum structural performance

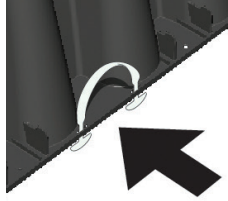
System Design

- Maximum land utilization & minimal environmental impact
- Design tool available at Prinsco.com/HydroStor-Resources
- Available as part of a complete solution with end caps, pipe manifolds & pretreatment options

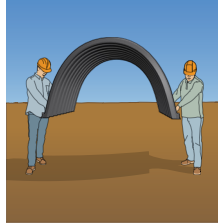
Handling

- Integrated Handles on HS290, HS180 & HS75 for safe on-site handling
- Sturdy and lightweight for safe transport and placement by 2 people
- Specially designed pallet for trouble free handling
- Maximum stacking density to reduce on-site staging footprint

Integrated Handles



Easy to Handle

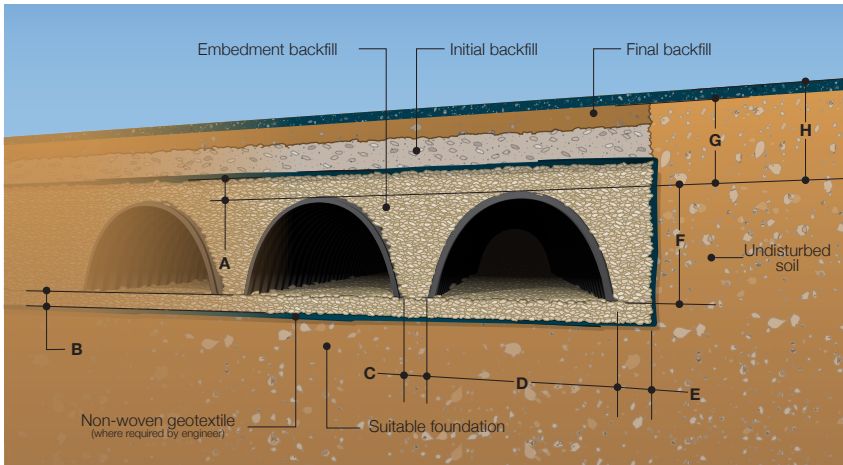


Reinforced Pallet*



* minimum 72" forks required on HS290, HS180 & HS75

Installation Specifications



	HS290	HS180	HS75	HS31
A backfill above chamber	12" min	12" min	6" min	6" min
B bedding	9" min	9" min	6" min	6" min
C chamber spacing	8.5"	8"	6"	6"
D chamber width	100.5"	78"	51"	34"
E backfill at edge of system	12"	12"	12"	12"
F chamber height	59.5"	45.5"	30"	16"
G minimum cover	24"	23.5"	18"	18"
H maximum burial depth	8'	8'	8'	8'

MOBILE RESOURCES



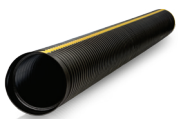
More about **HydroStor™**

- Installation Videos
- Installation Guides
- Specifications
- Technical Notes



Prinsco.com/HydroStor-Resources

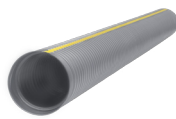
COLLECTION & CONVEYANCE



GOLFLO WT®
AASHTO Dual-Wall Pipe

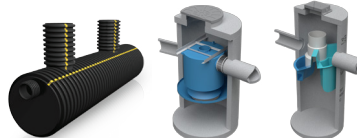


ECOFLU® 100
Recycled Dual-Wall Pipe



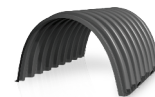
GOLDPRO STORM™
Dual-Wall HP Polypropylene

TREATMENT

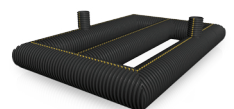


STORMWATER QUALITY
Engineered Water Treatment

STORAGE



HYDROSTOR™
Arched Chambers



UNDERGROUND DETENTION
Customized Pipe Systems