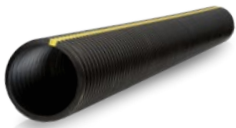


WATER MANAGEMENT SOLUTIONS



WATER MANAGEMENT SOLUTIONS

GOLDFLO®



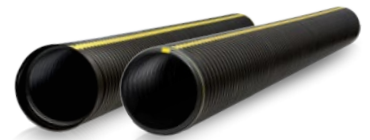
- Dual-wall HDPE pipe
- Great for culvert applications
- Manning's "n" value of 0.012
- Full offering of standard and custom fittings
- Available with gasketed watertight (WT) integral bell & spigot connection
- AASHTO M294 and ASTM F2306
- Available in 4" - 60" diameters

GOLDLINE®



- Single-wall HDPE pipe
- Meets or exceeds ASTM F405 or F667
- Available in perforated or non-perforated
- Available in coils or sticks
- AASHTO - M252 or M294
- Available in 3" - 15" diameter

GOLDFLO® WT



- Dual-wall HDPE pipe
- Gasketed watertight integral bell & spigot connection
- Bell and spigot verified to ASTM D3212 10.8 psi laboratory test.
- Manning's "n" value of 0.012
- Full offering of standard and custom fittings
- Available in 4" - 60" diameters

PROFORM™ HD



- Forms foundation footings, provides drainage and **radon venting**
- The dual-wall design adds strength without sacrificing the durability benefits of HDPE
- Supports **radon venting** to protect your home from poisonous radon gas
- Lightweight yet rigid for easy handling
- Doesn't crack in cold weather or when mishandled
- The 90° elbow allows for field modifications for other angles, eliminating the need for extra elbows on the jobsite.
- Ships with coupler installed for increased work site efficiency

SUMP DRAINAGE



- Water collection accessories intended for use with a sump pump
- Works with PROFORM HD for drainage outlet and **radon venting**
- Sump basins
- **Radon lids** with gasket sealed lid to keep out radon gas
- Solid and slotted lids
- Extensions
- Sump hose coils
- Sump hose kits

FITTINGS



- Single-wall and dual-wall HDPE
- Single-wall available in 2" - 15" diameters
- Dual-wall available in 4" - 60" diameters
- Full offering of fittings

ACCESSORIES



- Catch basins
- Check valves
- Downspout adapters



Green Fact:

Over the last 10 years, Prinsco's use of recycled materials has saved approximately 4 million barrels of oil and 2.1 million cubic yards of landfill space.

WATER MANAGEMENT SOLUTIONS FOR DIVERSE MARKETS



AGRICULTURE



RESIDENTIAL



CIVIL/COMMERCIAL

MOBILE RESOURCES



Prinsco product resources

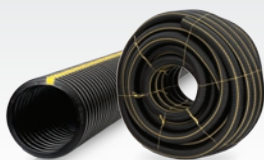
- Installation Documents
- Specifications
- Technical Notes



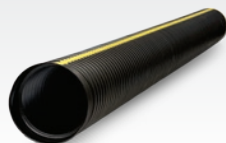
Prinsco.com/ResidentialResources

ENGINEERED WITH INTEGRITY

Prinsco products are fully supported by our engineering team and are designed, manufactured and tested to meet/exceed the high performance needs of the construction market. Prinsco's engineering, quality control and production teams are committed to a continuous process of innovation, product development and quality improvement. We are focused on current and future market needs centered around environmental sustainability, water quality, stormwater management and performance advancement.



GOLDLINE®
SINGLE-WALL



GOLDFLO®
DUAL-WALL STICKS



PROFORM™ HD
FORM DRAIN VENT



FITTINGS



SUMP DRAINAGE



PRINSCO.COM
Your Resources. One Stop. Any Device.

800.992.1725