

WATER MANAGEMENT SOLUTIONS



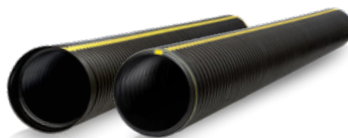
WATER MANAGEMENT SOLUTIONS

GOLDLINE®



- Single-wall HDPE pipe
- Meets or exceeds ASTM F405 or F667
- Available in perforated or non-perforated
- Available in coils or sticks
- AASHTO - M252 or M294
- Available in 2" - 15" diameter

GOLDFLO®



- Dual-wall HDPE pipe
- Great for culvert applications
- Manning's "n" value of 0.012
- Full offering of standard and custom fittings
- Available plain-end or gasketed watertight integral bell & spigot connection
- Bell and spigot verified to ASTM D3212 10.8 psi laboratory test.
- AASHTO M294 and ASTM F2306
- Available in 4" - 60" diameters

PROFORM HD®



- Forms foundation footings, provides drainage and radon venting
- The dual-wall design adds strength without sacrificing the durability benefits of HDPE
- Supports radon venting to protect your home from poisonous radon gas
- Lightweight yet rigid for easy handling
- Doesn't crack in cold weather or when mishandled
- The 90° elbow allows for field modifications for other angles, eliminating the need for extra elbows on the jobsite.
- Ships with coupler installed for increased work site efficiency

PRO 4®



- Pro4/24, Pro4/36, Pro4/36HC, & Pro4/36LP chambers with end cap
- Interlocking coupling with 10° joint articulation
- Asymmetrical arch design
- Injection molded using high-performance polymers
- Exceeds International Association of Plumbing and Mechanical Officials (IAPMO) standards

SUMP DRAINAGE



- Water collection accessories intended for use with a sump pump
- Works with PROFORM HD for drainage outlet and radon venting
- Radon lids with gasket sealed lid to keep out radon gas
- Sump basins
- Solid and slotted lids
- Extensions
- Sump hose kits

FITTINGS



- Single-wall and dual-wall HDPE
- Single-wall available in 2" - 15" diameters
- Dual-wall available in 4" - 60" diameters
- Full offering of fittings

ACCESSORIES



- Catch basins
- Downspout adapters
- HDPE aprons
- Tile Tape

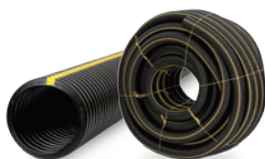


Prinsco product resources

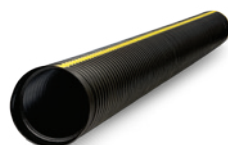
Installation Documents
Specifications
Technical Notes



Prinsco products are fully supported by our engineering team and are designed, manufactured and tested to meet/exceed the high performance needs of the construction market. Prinsco's engineering, quality control and production teams are committed to a continuous process of innovation and product development. We are focused on current and future market needs centered around environmental sustainability, water quality, stormwater management and performance advancement.



GOLDLINE®
SINGLE-WALL



GOLDFLO®
DUAL-WALL STICKS



PROFORM HD®
FORM DRAIN VENT



FITTINGS



SUMP DRAINAGE