

# GOLDPRO STORM®



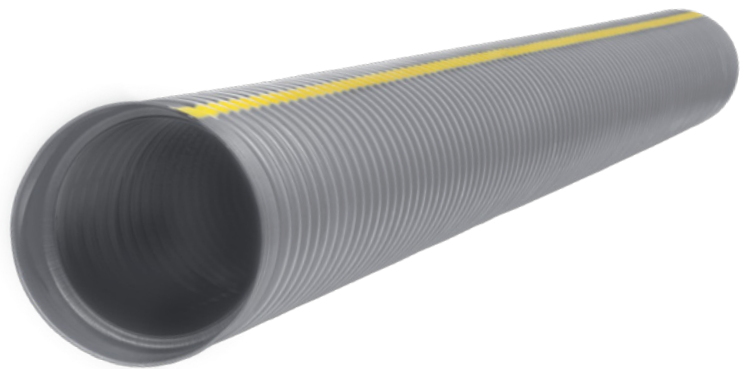
STORMWATER SOLUTIONS / COLLECTION & CONVEYANCE / DUAL-WALL

## GOLDPRO STORM®

Goldpro Storm® is a dual-wall corrugated polypropylene pipe. The combination of our engineered materials and watertight joint design result in a high performance pipe solution that is ideal for critical stormwater management applications.

Goldpro Storm meets the stringent requirements of ASTM F2881 and AASHTO M330, with joints that meet the requirements of ASTM D3212.

Goldpro Storm is perfect for projects where structural integrity, joint performance, installation efficiency, and overall quality are critical to your success.



## Goldpro Storm® Available Configurations

	Diameter(s)	Standard Length (ft.)	Connection	Pipe Features	Material	Standards*
Integrated Bell and Spigot	12" - 60"	20'	Gasket Watertight	Dual-wall Non-perforated Perforated	Polypropylene (PP)	ASTM F2881 AASHTO M330 ASTM D3212 ASTM F477

*Shorter lengths may be available at some locations.  
\* See back side for Performance Standards.*

## Performance

Goldpro Storm pipe meets the following:

- **ASTM F2881:** Standard Specification for 12 to 60 in (300 to 1500mm) Polypropylene (PP) Dual-Wall Pipe and Fittings for Non-Pressure Storm Sewer Applications
- **AASHTO M330:** Standard Specification for Polypropylene Pipe, 300- to 1500-mm (12- to 60-in.) Diameter
- **ASTM D3212:** Standard Specification for Joints for Drain and Sewer Plastic Pipes using Flexible Elastomeric Seals
- **ASTM F477:** Standard Specification for Elastomeric Seals (Gaskets) for Joining Plastic Pipe

## Applications

- Storm Sewers
- Highway Drainage
- Industrial Applications
- Ditch Enclosures
- Other Critical Drainage Applications

\* Contact your Prinsco representative regarding application suitability questions.

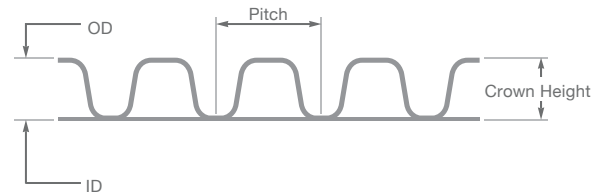
## Features

- Engineered blend of polypropylene material ensures maximum service life and maximum performance
- Increased pipe stiffness results in greater installation security
- Increased beam stiffness helps to hold true grade when site conditions vary unexpectedly
- Joint performance is enhanced to maximize the field service performance and less site conditions related sensitivity
- The industry proven dual-wall design ensures reliable and consistent long term performance
- Lightweight and easy field manipulation saves time, labor, and allows for the use of smaller equipment while contributing to a safer working environment
- Fittings to meet your specific needs and reduce field fabrication and costly structures

## Physical Pipe Dimensions

Nominal ID (in)	Approximate OD (in)	Length (ft)	Corrugation Pitch (in)	Min. Pipe Stiffness @ 5% Deflection (psi)
12"	14.6	20'	2.00	70
15"	17.8	20'	2.67	60
18"	21.5	20'	3.00	56
24"	28.2	20'	4.00	50
30"	34.7	20'	4.00	46
36"	40.9	20'	4.00	40
42"	47.9	20'	6.00	35
48"	54.6	20'	6.00	30
60"	67	20'	5.90	25

## Pipe Cross Section



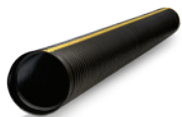
### More about Goldpro Storm®

- Installation Videos
- Installation Documents
- Specifications
- Technical Notes

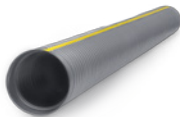


Prinsco products are fully supported by our engineering team and are designed, manufactured and tested to meet/exceed the high performance needs of the construction market. Prinsco's engineering, quality control and production teams are committed to a continuous process of innovation and product development. We are focused on current and future market needs centered around environmental sustainability, water quality, stormwater management and performance advancement.

### COLLECTION & CONVEYANCE

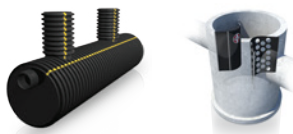


**GOLDFLO®**  
AASHTO Dual-Wall Pipe



**GOLDPRO STORM®**  
Dual-Wall HP Polypropylene

### TREATMENT

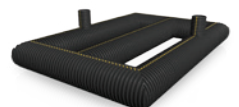


**STORMWATER QUALITY**  
Engineered Water Treatment

### STORAGE



**HYDROSTOR®**  
Arched Chambers



**UNDERGROUND DETENTION**  
Customized Pipe Systems