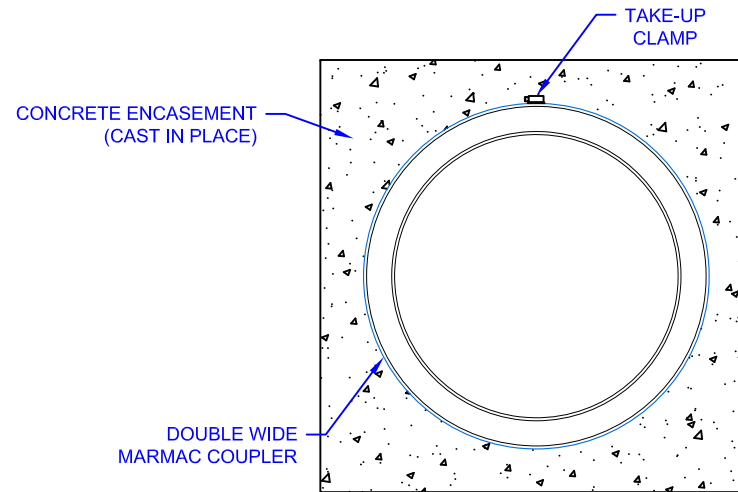
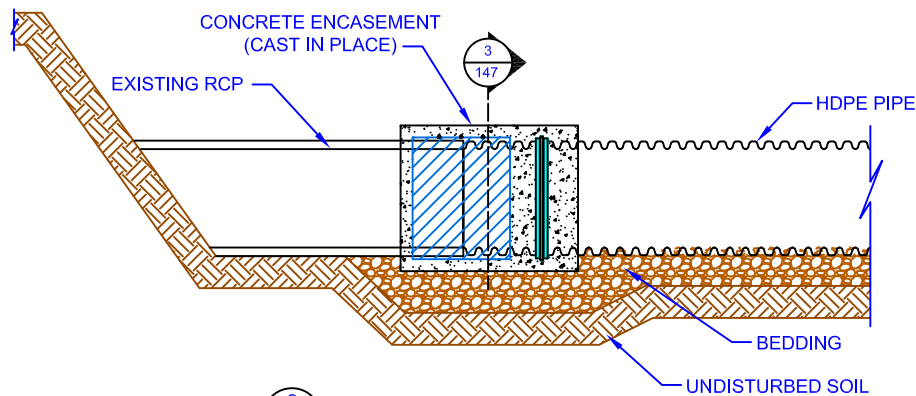


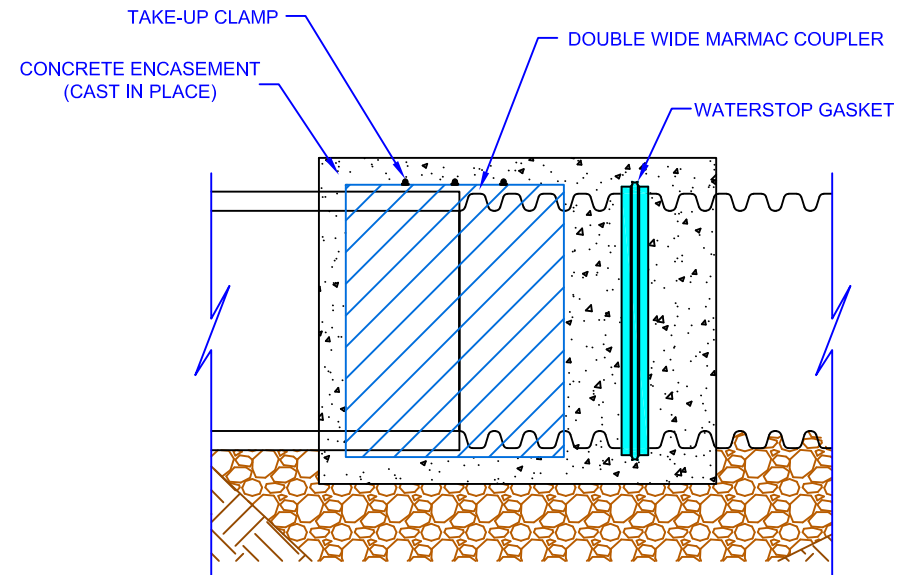
1 HDPE TO RCP PRE ASSEMBLY
SCALE: NTS



3 CONCRETE ENCASEMENT SECTION DETAIL
SCALE: NTS



2 HDPE TO RCP ASSEMBLED
SCALE: NTS



4 HDPE TO RCP ASSEMBLED CLOSE UP
SCALE: NTS

NOTES:

- ALL PIPE SHALL BE INSTALLED IN ACCORDANCE WITH ASTM D2321 - STANDARD PRACTICE FOR UNDERGROUND INSTALLATION OF FLEXIBLE THERMOPLASTIC SEWER PIPE, LATEST EDITION.
- ORDER OF ASSEMBLY SHALL BE: 1) WATERSTOP GASKET 2) DOUBLE WIDE MARMAC COUPLER 3) CONCRETE ENCASEMENT
- POLYSEAL IS A REGISTERED TRADEMARK OF MAR MAC PRODUCTS INC. (WWW.MARMAC.COM)

THIS DETAIL DEPICTS RECOMMENDED INSTALLATION PRACTICES AND IS NOT INTENDED TO SUPERSEDE ANY NATIONAL, STATE OR LOCAL SPECIFICATIONS. PRINSCO BEARS NO RESPONSIBILITY FOR ANY ALTERATIONS, REVISION AND/OR DEVIATION FROM THIS STANDARD DETAIL. PRINSCO HAS NOT PERFORMED ANY ENGINEERING OR DESIGN SERVICE FOR THIS PROJECT. THE DESIGN ENGINEER SHALL REVIEW THESE DETAILS PRIOR TO CONSTRUCTION TO VERIFY SUITABILITY. © PRINSCO, INC.



1717 16TH ST. NE
WILLMAR, MN 56201
www.prinsco.com

TITLE: HDPE PIPE - DISSIMILAR CONNECTION		REV: B
HDPE TO RCP WATER-TIGHT CONNECTION		
DRAWN BY: TRA	DATE: 03-Jul-17	DRAWING NUMBER:
SCALE: NTS	SHEET: 1 OF 1	D-1-147