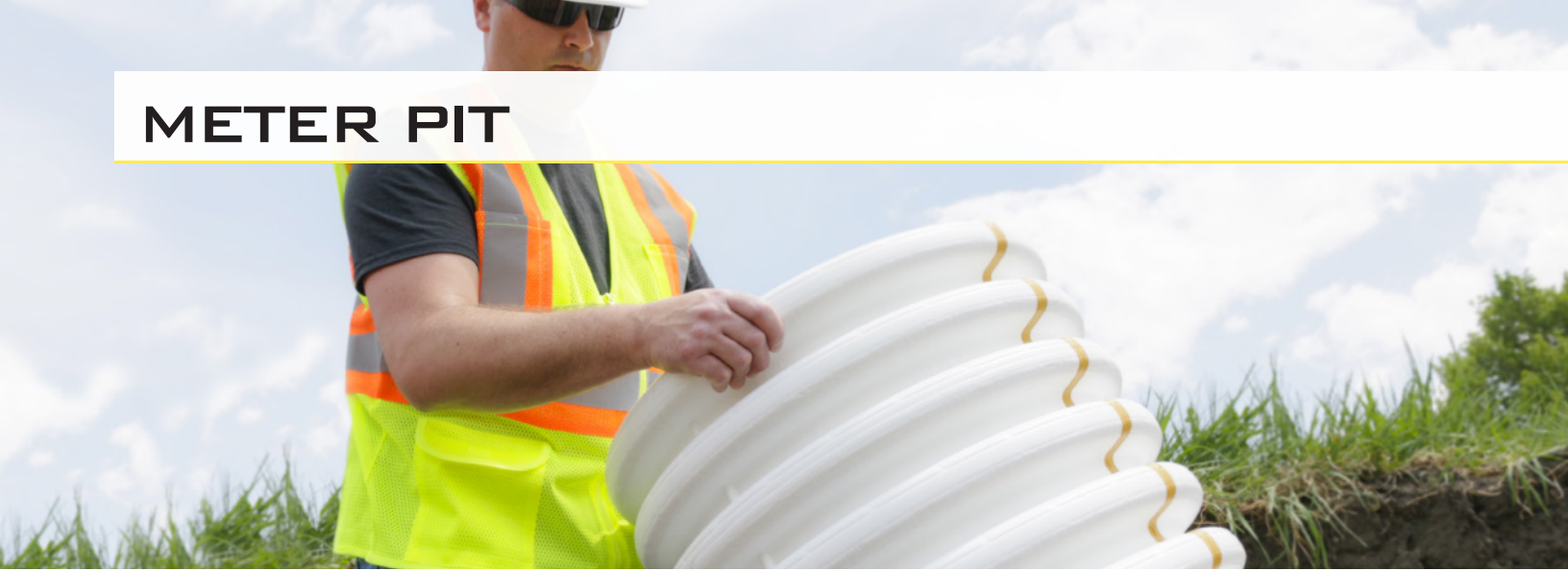


# METER PIT



## STORMWATER SOLUTIONS / DUAL-WALL

### METER PIT

Prinsco Meter Pits provide protection and ease of access for gas/water meters in residential and commercial applications. Made from high density polyethylene, meter pits are non-corrosive, crack resistant, and have a 75-year service life.

### Reference Specifications

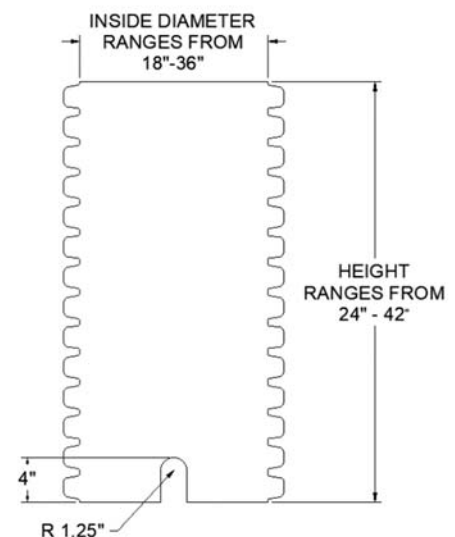
- **ASTM D3350:** Standard Specification for Polyethylene Plastics Pipe and Fittings Materials
- **ASTM D2321:** Standard Practice for Underground Installation of Thermoplastic Pipe for Sewers and Other Gravity-Flow Applications
- **ASTM D2412:** Standard Test Method for Determination of External Loading Characteristics of Plastic Pipe by Parallel-Plate Loading



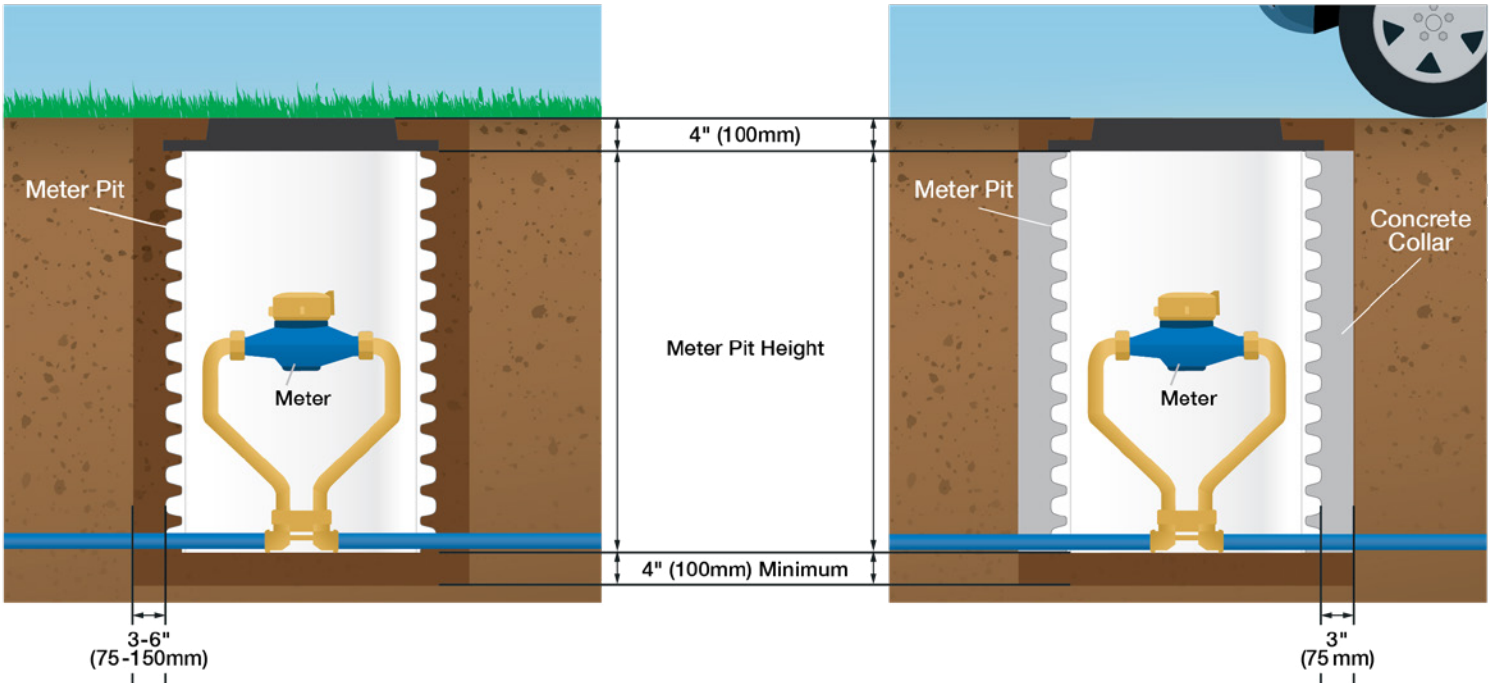
### Meter Pit Available Configurations

Diameter(s)	Standard Length (in.)	Material
18" - 36"	24" - 48"	High Density Polyethylene (HDPE)

\* Custom Meter Pits are available to meet a variety of requests such as custom cut-outs and lengths. Contact your local Prinsco sales representative for more information.



## Installation



### Non-Trafficked Application

- 4" (100mm) minimum cover height
- Trench walls 3-6" (75-150mm) from OD of Meter Pit
- 4" (100mm) minimum bedding depth
- Knife backfill into corrugations
- Review installation guide for complete instructions

### Trafficked Application

- Lid to be supported fully by concrete collar
- Trench walls 3" (75mm) from OD of Meter Pit
- 4" (100mm) minimum bedding depth
- Concrete collar required
- Review installation guide for complete instructions

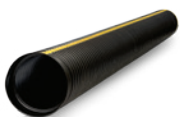
### More about Meter Pits

- Installation Videos
- Installation Documents
- Specifications
- Technical Notes

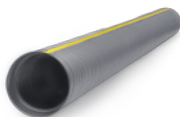


Prinsco products are fully supported by our engineering team and are designed, manufactured and tested to meet/exceed the high performance needs of the construction market. Prinsco's engineering, quality control and production teams are committed to a continuous process of innovation and product development. We are focused on current and future market needs centered around environmental sustainability, water quality, stormwater management and performance advancement.

### COLLECTION & CONVEYANCE

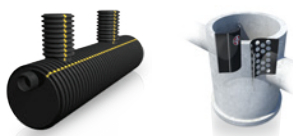


**GOLDFLO®**  
AASHTO Dual-Wall Pipe



**GOLDPRO STORM®**  
Dual-Wall HP Polypropylene

### TREATMENT

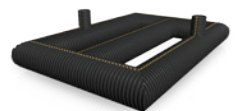


**STORMWATER QUALITY**  
Engineered Water Treatment

### STORAGE



**HYDROSTOR®**  
Arched Chambers



**UNDERGROUND DETENTION**  
Customized Pipe Systems