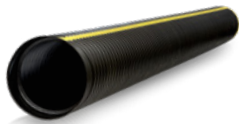


# STORMWATER SOLUTIONS



## STORMWATER SOLUTIONS / COLLECTION & CONVEYANCE

### GOLDFLO WT®



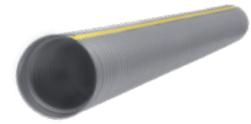
Dual-wall HDPE pipe  
Manning's "n" value of 0.012  
Full offering of standard and custom fittings  
Gasketed watertight integral bell & spigot connection  
AASHTO M252 and M294  
Available in 4" - 60" diameters

### ECOFLO® 100



Dual-wall HDPE pipe  
Made with a minimum of 40% recycled HDPE  
Engineered to provide a 100-year service life  
Gasketed soiltight or watertight integral bell & spigot connection  
Manning's "n" value of 0.012  
Full offering of standard and custom fittings  
Available in 4" - 60" diameters

### GOLDPRO STORM™



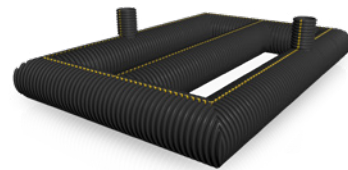
Dual-wall polypropylene pipe  
Increased pipe stiffness  
Manning's "n" value of 0.012  
Full offering of standard and custom fittings  
Gasketed watertight integral bell & spigot connection  
AASHTO M330 and ASTM F2881  
Available in 4" - 60" diameters

## STORMWATER SOLUTIONS / STORAGE



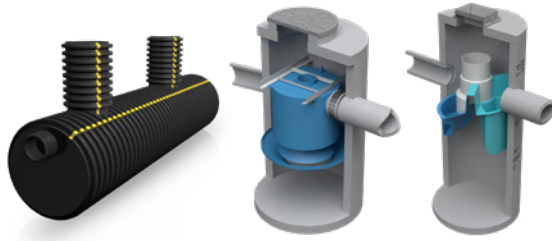
High performance polypropylene material  
Meets or exceeds ASTM F2418 product standard & ASTM F2787 design standard  
Meets AASHTO H20 live load & HL93 design load requirements  
Features integral connectors for simplified assembly  
Available as part of a complete solution  
Integrated Handles for safe on-site handling

### PIPE DETENTION



Manufactured from strong, durable HDPE pipe and fittings  
Customizable design  
Proven performance under H-20 and H-25 loading  
Available up to 60" in diameter  
Retention/Detention Design and Layout Assistance Available  
Detailed Installation Procedures Available

**STORMWATER  
QUALITY**



Removes at least 80% of total suspended solids  
Removes at least 80% of oil and grease  
Customizable  
Compatible with Prinsco pipe and accessories

**FITTINGS**



Dual-wall HDPE pipe  
Available in 4" - 60" diameters  
Full offering of standard and custom fittings

**ACCESSORIES**



Drain catch basins  
Inline drains  
Fabricated HDPE  
Customizable

**MOBILE RESOURCES**



**Prinsco product resources**  
Installation Videos  
Installation Documents  
Specifications  
Technical Notes

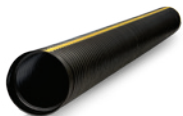


[Prinsco.com/CivilResources](http://Prinsco.com/CivilResources)

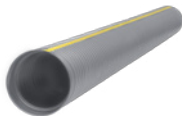
**ENGINEERED WITH INTEGRITY**

Prinsco products are fully supported by our engineering team and are designed, manufactured and tested to meet/exceed the high performance needs of the construction market. Prinsco's engineering, quality control and production teams are committed to a continuous process of innovation, product development and quality improvement. We are focused on current and future market needs centered around environmental sustainability, water quality, stormwater management and performance advancement.

**COLLECTION & CONVEYANCE**

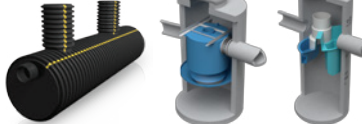


**GOLDFLO WT®**  
AASHTO Dual-Wall Pipe



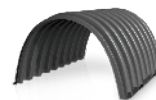
**GOLDPRO STORM™**  
Dual-Wall HP Polypropylene

**TREATMENT**

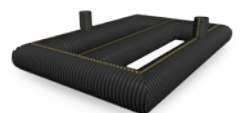


**STORMWATER QUALITY**  
Engineered Water Treatment

**STORAGE**



**HYDROSTOR™**  
Arched Chambers



**UNDERGROUND  
DETENTION**  
Customized Pipe Systems