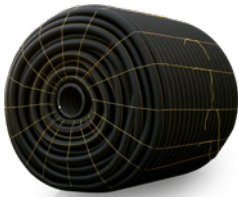


AGRICULTURAL WATER MANAGEMENT



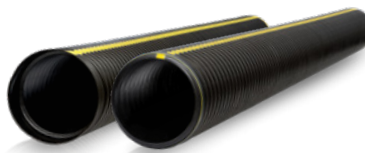
Water Management Solutions / Collection & Conveyance

GOLDLINE®



- Single-wall HDPE pipe
- Meets or exceeds ASTM F667
- Available in multiple perforation options
- Available in coils or sticks
- AASHTO - M252 or M294 - Type C
- Available in 3" - 15" diameter

GOLDFLO®



- Dual-wall HDPE pipe
- Manning's "n" value of 0.012
- Full offering of standard and custom fittings
- Integral bell and spigot connections in water tight and soil tight configurations
- AASHTO M294, M252 and ASTM F2306 or F2648
- Available in 4" - 60" diameters

GOLDFLEX®



- Flexible Dual-wall HDPE pipe
- Installs 60% faster than dual-wall sticks
- Trenchless installation increases safety
- Less labor and equipment in the field
- Ideal for high water table areas
- Available in 8", 10", 12", and 15" diameters

Water Management Solutions / Outlet

Water Level Control



- Constructed of 1/2" PVC with lockable lid (No lid on inlet structures)
- Stainless steel screws and custom anodized aluminum corner extrusions used for strength and durability
- Flexible couplers allow PVC, plastic pipe, or other materials to be easily attached
- Stoplogs made of PVC in 5" and 7" heights for adjustability

Lift Station



- Standard 13' x 48" provides increased storage volume
- Galvanized, polymer coated steel tanks provide increased protection against abrasion and corrosion
- Basin stub receives 18" Prinsco Goldflo without couplers
- Available up to 60" in diameter
- Backfill with native soil
- Custom basins available by request

Fittings



- Single-wall and dual-wall HDPE fittings
- Available in 3" - 60" diameters
- Full offering of standard and custom fittings

Accessories



- Maxi stringer
- Intakes
- Oulets
- Tools



the
Water Table
Ag Water Management Education



Invested in education.

Supporting industry research and creating educational content.

 <https://www.watertable.ag> 

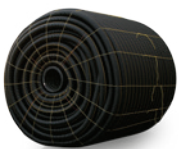
Resources

Prinsco product resources

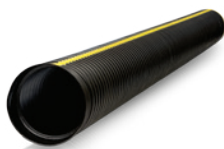
- Installation Videos
- Installation Documents
- Specifications
- Technical Notes



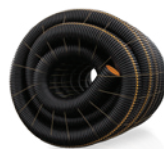
Prinsco products are fully supported by our engineering team and are designed, manufactured and tested to meet/exceed the high performance needs of the construction market. Prinsco's engineering, quality control and production teams are committed to a continuous process of innovation and product development. We are focused on current and future market needs centered around environmental sustainability, water quality, stormwater management and performance advancement.



GOLDLINE®



GOLDFLO®
DUAL-WALL STICKS



GOLDFLEX®



FITTINGS



CONTROLLED DRAINAGE