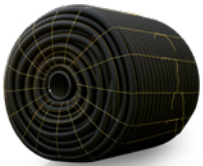


AGRICULTURAL WATER MANAGEMENT



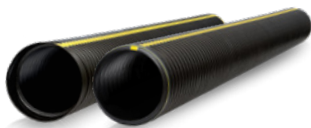
WATER MANAGEMENT SOLUTIONS / COLLECTION & CONVEYANCE

GOLDLINE®



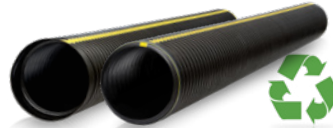
- Single-wall HDPE pipe
- Meets or exceeds ASTM F667
- Available in perforated or non-perforated
- Available in coils or sticks
- AASHTO - M252 or M294 - Type C
- Available in 3" - 15" diameter

GOLDFLO WT®



- Dual-wall HDPE pipe
- Manning's "n" value of 0.012
- Full offering of standard and custom fittings
- Gasketed watertight integral bell & spigot connection
- AASHTO M294, M252 and ASTM F2306
- Available in 4" - 60" diameters

ECOFLO® 100



- Dual-wall HDPE pipe
- Made with a minimum of 40% recycled HDPE
- 100-year service life
- Plain end or gasketed soiltight or watertight integral bell & spigot connection
- Manning's "n" value of 0.012
- Available in 4" - 60" diameters

GOLDFLEX™



Flexible Dual-wall HDPE pipe
Installs 60% faster than dual-wall sticks
Trenchless installation increases safety
Less labor & equipment in the field
Ideal for high water table areas
Available in 8", 12" & 15" diameters

WATER MANAGEMENT SOLUTIONS / OUTLET

WATER LEVEL CONTROL



Constructed of 1/2" PVC with lockable lid (No lid on inlet structures)
Stainless steel screws and custom anodized aluminum corner extrusions used for strength and durability
Flexible couplers allow PVC, plastic pipe, or other materials to be easily attached
Stoplogs made of PVC in 5" and 7" heights for adjustability

AG CATCH BASIN



Standard 13' x 48" provides increased storage volume
Galvanized, polymer coated steel tanks provide increased protection against abrasion & corrosion
Basin stub receives 18" Prinsco ECOFLO100 or GOLDFLO without couplers
Available up to 60" in diameter
Backfill with native soils

WATER MANAGEMENT SOLUTIONS / FITTINGS & ACCESSORIES

FITTINGS



Single-wall and dual-wall HDPE pipe
Available in 3" - 60" diameters
Full offering of standard and custom fittings

ACCESSORIES



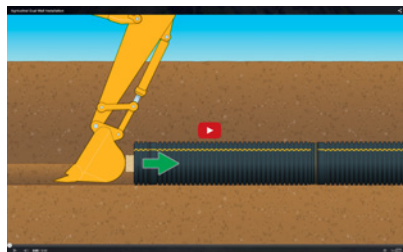
Maxi stringer
Intakes
Outlets
Tools

WATER MANAGEMENT SOLUTIONS / EDUCATION

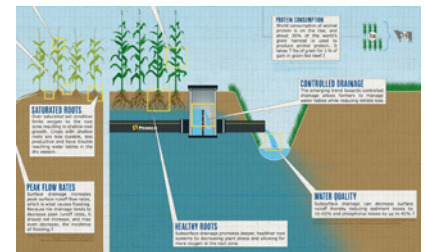
Prinsco has been an industry leader for over 35 years. We continue to lead by creating online tools to help educate our customers and communities about the benefits of responsible water management practices.



Agricultural Water Management 101 explains how water management works and why it has the potential to improve crop health and productivity



Agricultural Dual-Wall Installation explains how to install dual-wall pipe in an agricultural application



Increasing Agricultural Efficiency With Water Management explains how water management can increase agricultural efficiency.

Find these educational tools and more at prinsco.com/education

RESOURCES

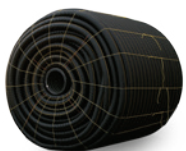


Prinsco product resources

Installation Videos
Installation Documents
Specifications
Technical Notes



prinsco.com/agresources



GOLDLINE®



ECOFLO® 100



GOLDFLEX® G2



FITTINGS



CONTROLLED DRAINAGE