

PRODRI™ 

PRODRI™ 
GEO

PRODRI™ 
6000

INSTALLATION GUIDE

INTRODUCTION

PRODRI™ is a high-density polyethylene (HDPE) studded membrane. It is ideal for damp proofing and drainage in basements and underground walls. It creates an air gap between soil and wall and hinders moisture penetration. Installed with the studs facing the wall, a 5/16" (8 mm) ventilation cavity is created between the foundation wall and the membrane.

Read through this entire guide before installing the PRODRI membrane.

For speed and ease, it is recommended to use a two-person crew for installation.

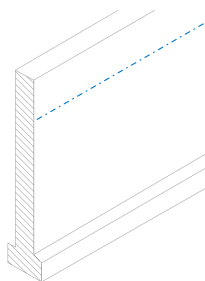
PRODUCT MATERIALS AND TOOLS

- PRODRI™ rolls
- Nails
- Fasteners
- Washers
- Adhesive Strip
- Caulk
- Edge Molding
- Utility knife
- Caulking gun
- Chalk line
- Hammer
- Air nailer
- Brush
- Cordless drill

PREPARATION

1. Brush the footing until it is clean or free of all debris.
2. Inspect the wall where the PRODRI is to be installed. Fix any defects or issues that could damage the materials or interfere with the installation.

LAYOUT



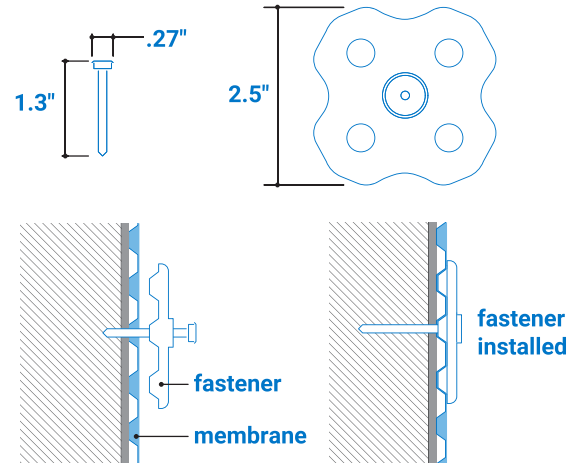
1. Snap a chalk line around the building where the estimated backfill final grade will be.
2. Determine the membrane orientation.

If the membrane cannot be applied horizontally due to the height of the wall being either too short or too tall, a **vertical orientation** may be necessary.

However, if the height of the wall greatly exceeds the width of the membrane roll, a

horizontal orientation of two or more courses of membrane can be placed to cover the waterproofing as an alternative.

FASTENING INSTRUCTIONS

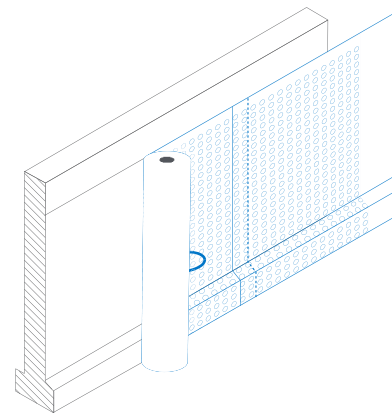


The specially-designed fasteners fit firmly into the back side of the studs on the membrane. Follow the instructions below for fastener placement.

INSTALLATION

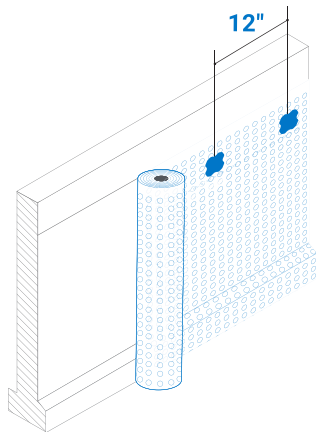
For either horizontal orientation or vertical orientation, start at the center of one wall.

Horizontal Orientation

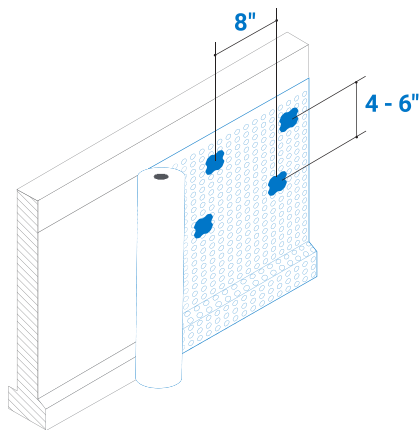


1. Unroll about 10' (3 m) of PRODRI, with the flat tab upwards.
2. **Install with the studs facing the wall.**
3. Position the top of the membrane to the chalk line.
4. Ensure the membrane extends over the edge of the footing to where the gravel or crushed rock drainage system is to be installed.

INSTALLATION (CONT'D)

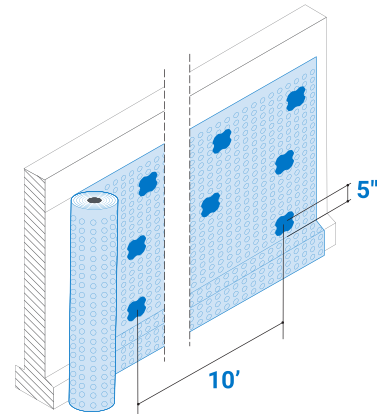


5. Install fasteners in a staggered pattern, as shown in the drawing above, 12" (30 cm) on center.



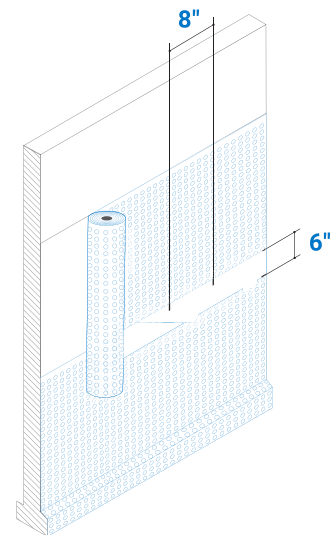
6. The next row of fasteners should be 4"- 6" (10-15 cm) lower than the previous row of fasteners and staggered 8" (20 cm) to the left or right.

NOTE: In case of heavy clay-type soil conditions, install an additional row of fasteners, 8" (20 cm) below the second row and at 48" (120cm) centers.



7. Install a row of fasteners 5" (12 cm) above the footing at 10' (3m) on center to prevent the gravel from getting between the membrane and the foundation wall.

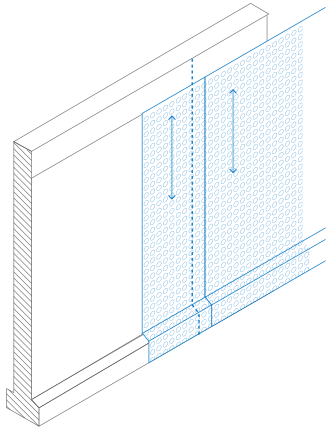
Horizontal Orientation with Multiple Courses



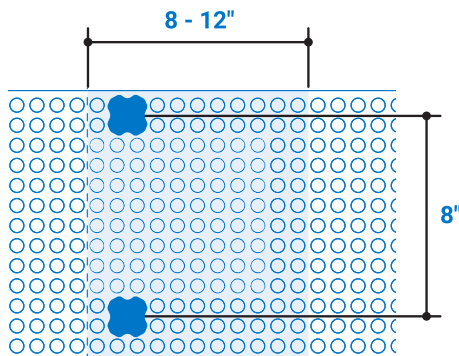
1. Install the first course from the footing upwards.
2. Place fasteners along the overlapped area every 8" (20 cm).
3. Overlap the second course at least 6" (15 cm) on top of previous course.

INSTALLATION (CONT'D)

Vertical Orientation



1. Cut the roll into sections to the appropriate height.
2. Ensure the membrane extends over the edge of the footing to where the gravel or crushed rock drainage system is to be installed.
3. Apply cut sections side by side.
4. Install with the studs facing the wall.
5. Position the top of the membrane to the chalk line.

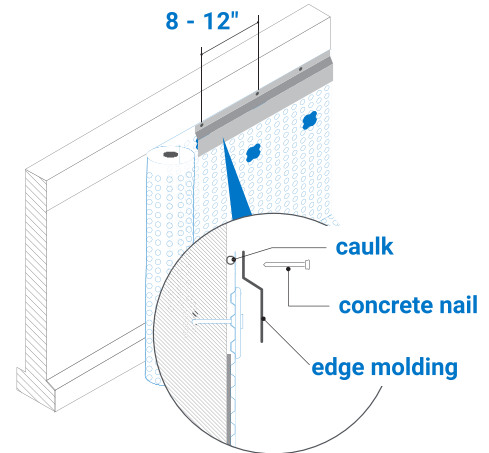


6. Overlap section by 8"-12" (20-30 cm) at each side, ensuring the studs interlock. Secure membrane joint with fasteners placed along the overlapped area every 8" (20 cm).

Follow the fastening instructions under "Horizontal Orientation" for PRODRI, steps 5 through 7, to firmly secure each vertical membrane section.

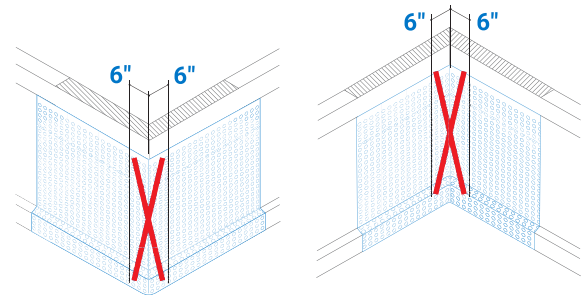
CAPPING

The membrane should be positioned high enough to completely waterproof the wall and must be capped by the edge molding to stop the backfill from entering the gap between the wall and membrane.



1. Apply a bead of caulk behind the flat tab area of the membrane.
2. Nail the edge molding to the flat tab area of the membrane at 8"-12" (20-30cm) intervals.

CORNERS

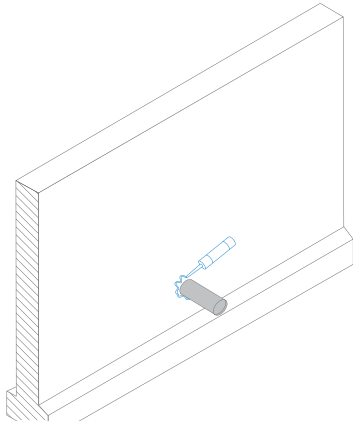


Ensure that the membrane follows the contours of the foundation corners as closely as possible.

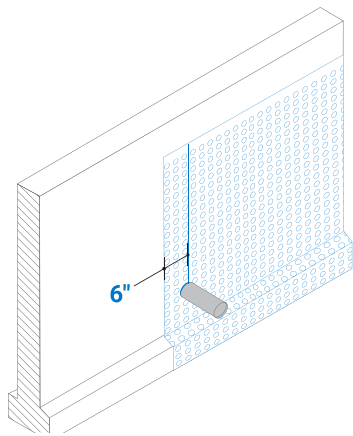
DO NOT place fasteners within 6" (15cm) of the corner, as this may damage the foundation corner.

Use the handle of the hammer to press the material into internal corners.

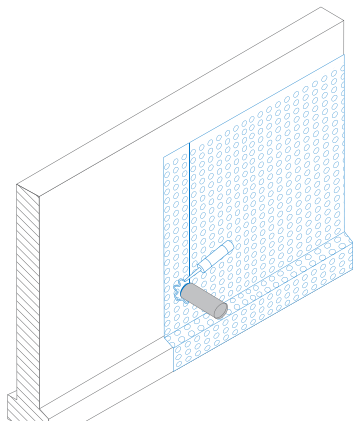
SERVICE LINE PENETRATIONS



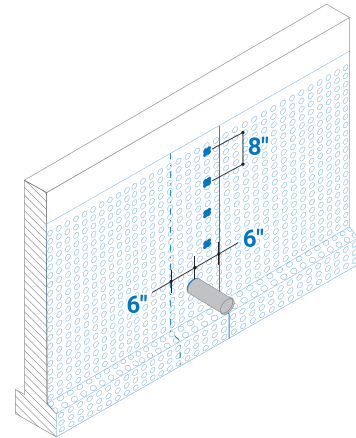
1. Place caulk around the pipe or penetration.



2. Cut the membrane vertically so that it extends 6" (15cm) past the pipe or penetration.
3. Once in place, trim the membrane so that it fits as tightly as possible.

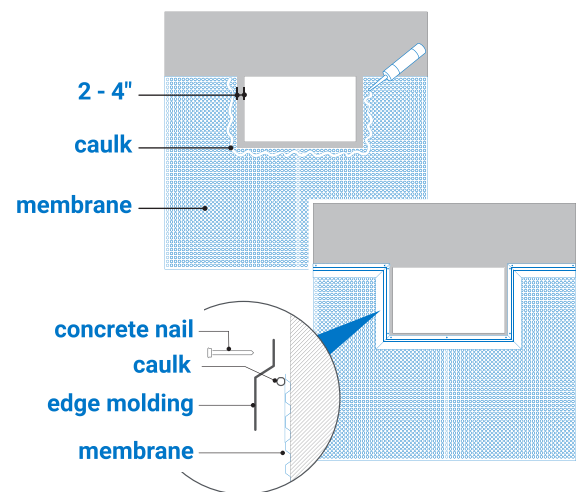


4. Place caulk over the membrane so that there is a layer of mastic both above and below the membrane around the pipe or penetration.



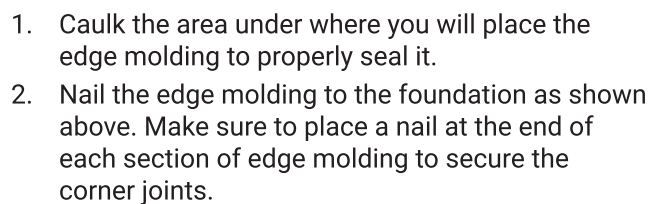
5. Start the next run of membrane 6" (15cm) before the pipe or penetration so that the total overlap around the pipe or penetration is 12" (30cm), again trimming around the pipe or penetration for a tight fit.
6. Install fasteners every 8" (20cm) along the edge of the overlapped membrane.

BASEMENT WINDOWS



1. Trim the membrane 2"-4" (5 - 10cm) back from the edge of the window.
2. Caulk the area under where you will place the edge molding to properly seal it.
3. Nail the edge molding to the foundation as shown above. Make sure to place a nail at the end of each section of edge molding to secure the corner joints.

For change of grade or areas where the flat tab has been trimmed off:

[illegible]

INTRODUCTION

PRODRI™ GEO is a high-density polyethylene (HDPE) studded membrane bonded to a special PP fabric. It is ideal for drainage in basements and underground walls.

Read through this entire guide before installing the PRODRI GEO membrane.

For speed and ease, it is recommended to use a two-person crew for installation.

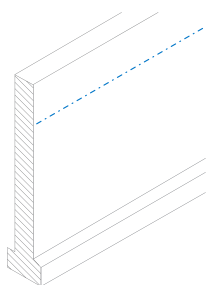
PRODUCT MATERIALS AND TOOLS

- PRODRI™ GEO rolls
- Nails
- Fasteners
- Washers
- Adhesive Strip
- Caulk
- Edge Molding
- Utility knife
- Caulking gun
- Chalk line
- Hammer
- Air nailer
- Brush
- Cordless drill

PREPARATION

1. Brush the footing until it is clean or free of all debris.
2. Inspect the wall where the PRODRI GEO is to be installed. Fix any defects or issues that could damage the materials or interfere with the installation.

LAYOUT

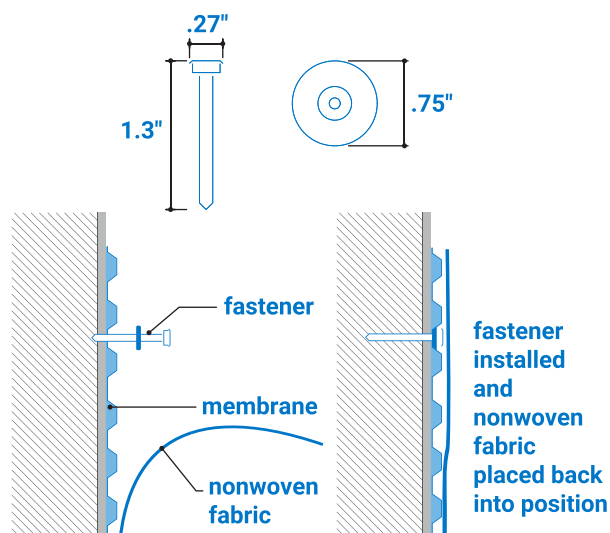


1. Snap a chalk line around the building where the estimated backfill final grade will be.
2. Determine the membrane orientation.

If the membrane cannot be applied horizontally due to the height of the wall being either too short or too tall, a **vertical orientation** may be necessary.

However, if the height of the wall greatly exceeds the width of the membrane roll, a **horizontal orientation** of two or more courses of membrane can be placed to cover the waterproofing as an alternative.

FASTENING INSTRUCTIONS



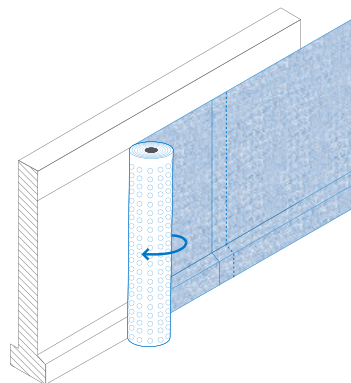
The specially-designed fasteners fit firmly between the studs on the membrane. Follow the instructions below for fastener placement.

For the first row of fasteners, peel the non-woven fabric back enough to allow room to insert the fastener. Place the fabric back into position when the first row is completed.

INSTALLATION

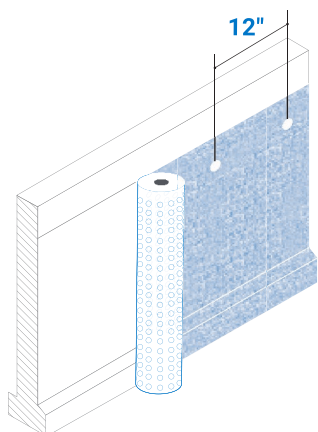
For either horizontal orientation or vertical orientation, start at the center of one wall.

Horizontal Orientation



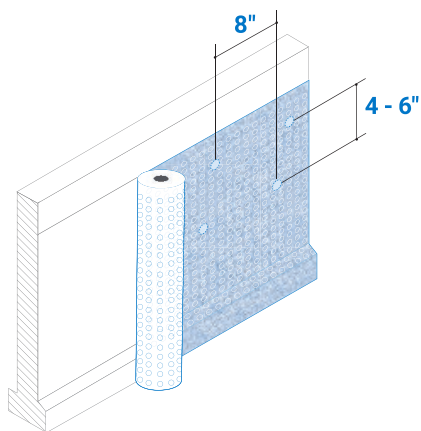
1. Unroll about 10' (3 m) of PRODRI GEO, with the flat tab upwards.
2. **Install with the studs facing away from the wall.**
3. Position the top of the membrane to the chalk line.
4. Ensure the membrane extends over the edge of the footing to where the gravel or crushed rock drainage system is to be installed.

INSTALLATION (CONT'D)



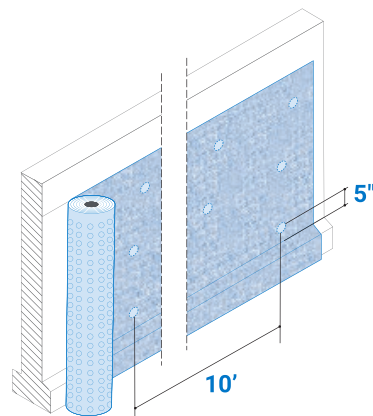
5. Install fasteners in a staggered pattern, as shown in the drawing above, 12" (30 cm) on center.

For the first row of fasteners, peel the non-woven fabric back enough to allow room to insert the fastener. Place the fabric back into position when the first row is completed.



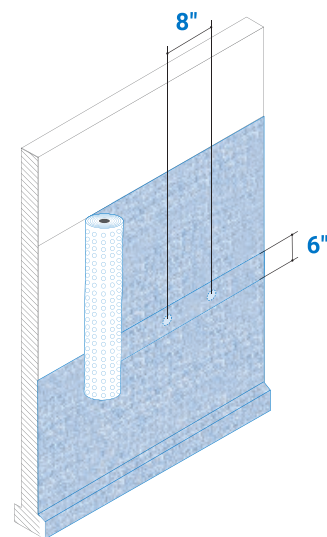
6. The next row of fasteners should be 4"- 6" (10-15 cm) lower than the previous row of fasteners and staggered 8" (20 cm) to the left or right.

NOTE: In case of heavy clay-type soil conditions, install an additional row of fasteners, 8" (20 cm) below the second row and at 48" (120cm) centers.



7. Install a row of fasteners 5" (12 cm) above the footing at 10' (3m) on center to prevent the gravel from getting between the membrane and the foundation wall.

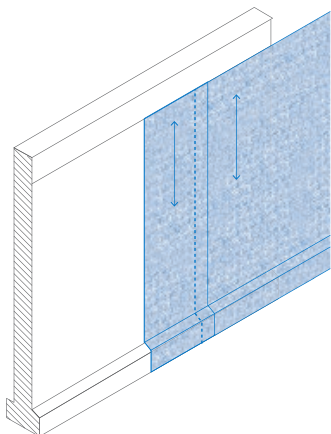
Horizontal Orientation with Multiple Courses



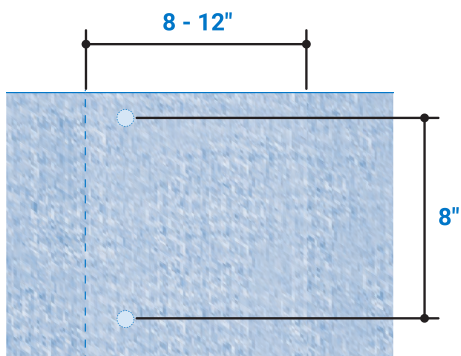
1. Install the first course from the footing upwards.
2. Place fasteners along the overlapped area every 8" (20 cm).
3. Overlap the second course at least 6" (15 cm) on top of previous course.

INSTALLATION (CONT'D)

Vertical Orientation



1. Cut the roll into sections to the appropriate height.
2. Ensure the membrane extends over the edge of the footing to where the gravel or crushed rock drainage system is to be installed.
3. Apply cut sections side by side.
4. **Install with the studs facing away from the wall.**
5. Position the top of the membrane to the chalk line.

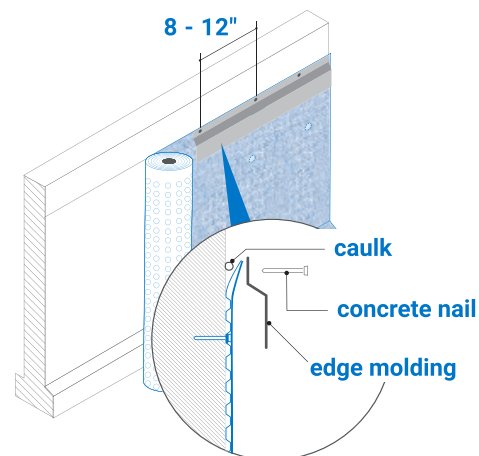


6. Overlap section by 8"-12" (20-30 cm) at each side, ensuring the studs interlock. Secure membrane joint with fasteners placed along the overlapped area every 8" (20 cm).

Follow the fastening instructions under "Horizontal Orientation" for PRODRI GEO, steps 5 through 7, to firmly secure each vertical membrane section.

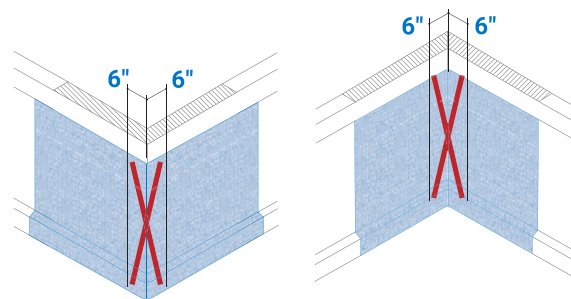
CAPPING

The membrane should be positioned high enough to completely waterproof the wall and must be capped by the edge molding to stop the backfill from entering the gap between the wall and membrane.



1. Apply a bead of caulk behind the flat tab area of the membrane.
2. Nail the edge molding to the flat tab area of the membrane at 8"-12" (20-30cm) intervals.

CORNERS

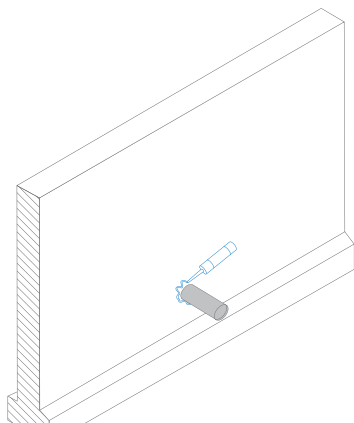


Ensure that the membrane follows the contours of the foundation corners as closely as possible.

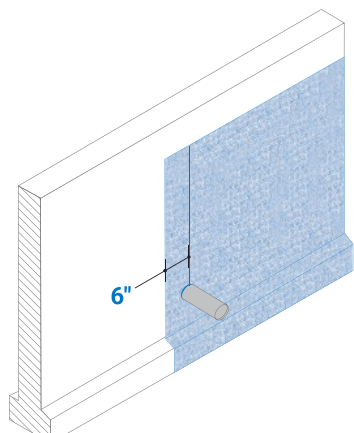
DO NOT place fasteners within 6" (15cm) of the corner, as this may damage the foundation corner.

Use the handle of the hammer to press the material into internal corners.

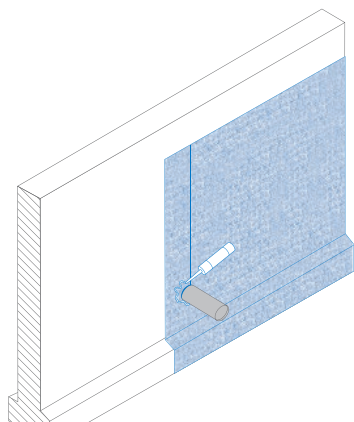
SERVICE LINE PENETRATIONS



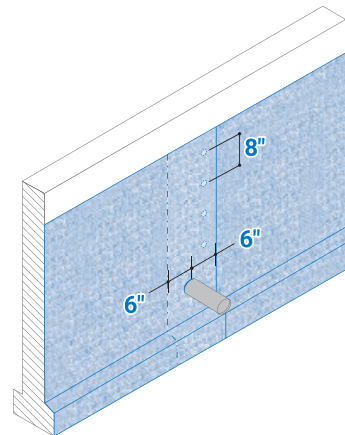
1. Place caulk around the pipe or penetration.



2. Cut the membrane vertically so that it extends 6" (15cm) past the pipe or penetration.
3. Once in place, trim the membrane so that it fits as tightly as possible.

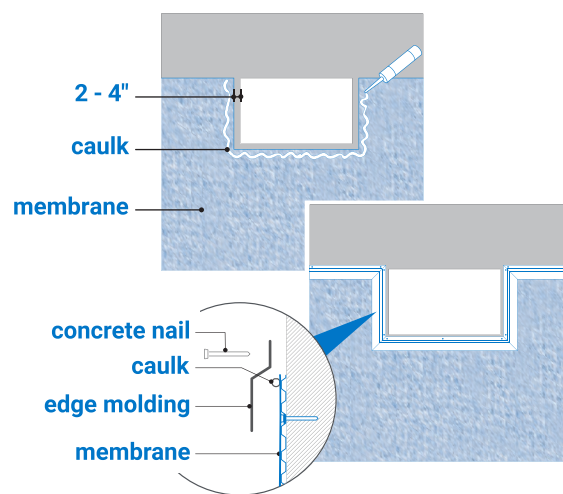


4. Place caulk over the membrane so that there is a layer of mastic both above and below the membrane around the pipe or penetration.



5. Start the next run of membrane 6" (15cm) before the pipe or penetration so that the total overlap around the pipe or penetration is 12" (30cm), again trimming around the pipe or penetration for a tight fit.
6. Install fasteners every 8" (20cm) along the edge of the overlapped membrane.

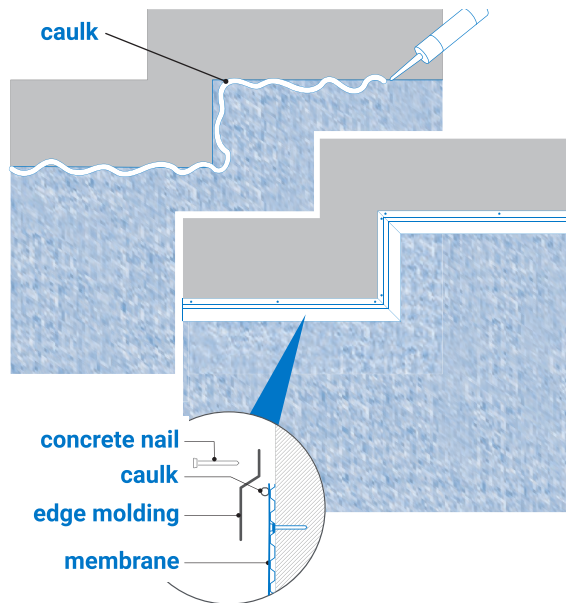
BASEMENT WINDOWS



1. Trim the membrane 2"-4" (5 - 10cm) back from the edge of the window.
2. Caulk the area under where you will place the edge molding to properly seal it.
3. Nail the edge molding to the foundation as shown above. Make sure to place a nail at the end of each section of edge molding to secure the corner joints.

CHANGE OF GRADE

For change of grade or areas where the flat tab has been trimmed off:



1. Caulk the area under where you will place the edge molding to properly seal it.
2. Nail the edge molding to the foundation as shown above. Make sure to place a nail at the end of each section of edge molding to secure the corner joints.

NOTES:

[illegible]

INTRODUCTION

PRODRI™ 6000 is a commercial grade, high-density extruded polyethylene (HDPE) membrane, bonded to a filter geotextile. Ideal in blind side waterproofing.

Read through this entire guide before installing the PRODRI GEO membrane.

For speed and ease, it is recommended to use a two-person crew for installation.

NOTES:

[illegible]

PRODUCT MATERIALS AND TOOLS

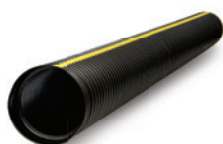
- PRODRI™ 6000 rolls
- Nails
- Fasteners
- Washers
- Adhesive Strip
- Caulk
- Edge Molding
- Utility knife
- Caulking gun
- Chalk line
- Hammer
- Air nailer
- Brush
- Cordless drill

INSTALLATION

The preparation, installation, and special instructions for the PRODRI 6000 are identical to the PRODRI GEO product line. See pages 7 through 11 of this guide for installation instructions.



GOLDLINE®
SINGLE-WALL



**GOLDFLO®
DUAL-WALL STICKS**



PROFORM® HD
FORM DRAIN VENT



FITTINGS



SUMP DRAINAGE