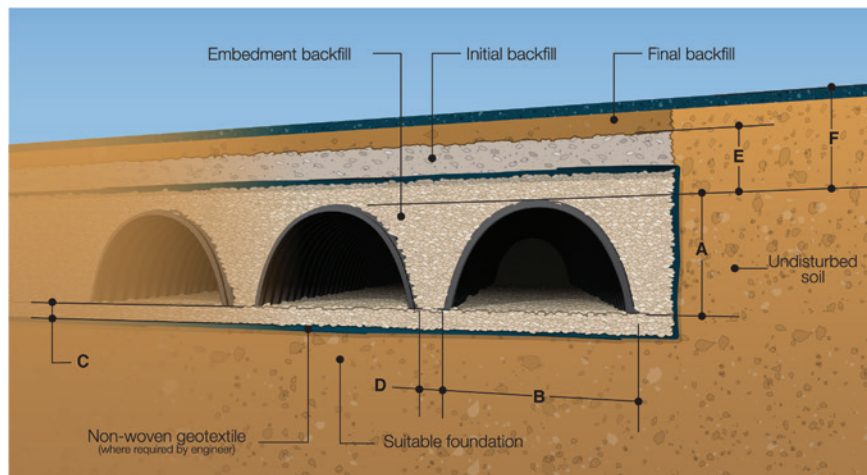


HydroStor[®] | HS31 vs Stormtech SC-310



Hydrostor HS31		Stormtech SC-310
15.9"	Height	16"
33.9"	Width	34"
85.4"	Installed Length	85.4"
6"	Bedding	6"
6"	Chamber Spacing	6"
6"	Chamber Embedment Backfill*	6"
18"	Min. Cover Height**	18"
40"	Min. Installed Depth to Base of Stone	40"
8'	Max. Burial Depth***	8'
2.09 ft ³ /ft	Chamber Storage	2.07 ft ³ /ft
14.9 ft ³ /chamber	Chamber Storage	14.7 ft ³ /chamber
2.28 ft ³ /ft	Stone Void Volume****	2.29 ft ³ /ft
4.37 ft ³ /ft	Installed Storage Capacity	4.36 ft ³ /ft
31.1 ft ³ /chamber	Installed Storage Capacity	31 ft ³ /chamber
32 lbs	Weight	37 lbs
PP	Material	PP
Injection Molded	MFG Method	Injection Molded
ASTM F2418	ASTM Spec(s)	ASTM F2418
ASTM F2787		ASTM F2787

* Used in Installed Storage Calculations **Measured from top of chamber to bottom of pavement
 *** Measured from the top of chamber to the top of pavement ****Assumes 40% porosity

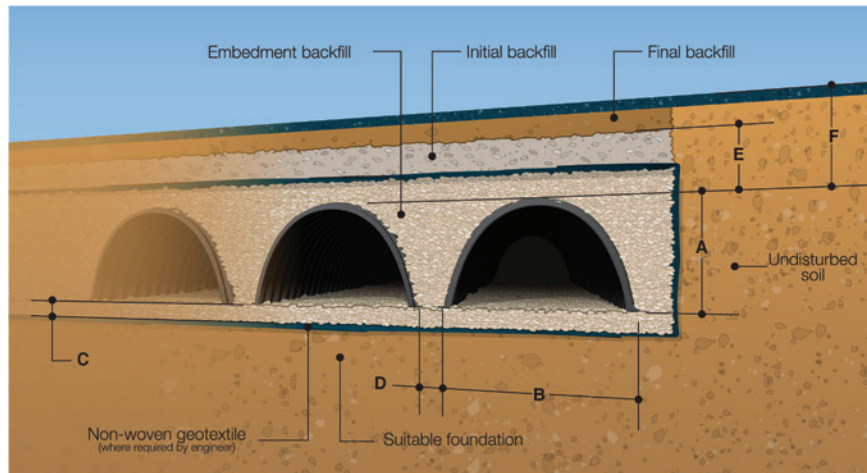


HydroStor® HS75 vs Stormtech SC-740



Hydrostor HS75		Stormtech SC-740	
29.7"	Height	30"	
51"	Width	51"	
84.9"	Installed Length	85.4"	
6"	Bedding	6"	
6"	Chamber Spacing	6"	
6"	Chamber Embedment Backfill*	6"	
18"	Min. Cover Height**	18"	
53.7"	Min. Installed Depth to Base of Stone	54"	
8'	Max. Burial Depth***	8'	
6.56 ft ³ /ft	Chamber Storage	6.45 ft ³ /ft	
46.4 ft ³ /chamber	Chamber Storage	45.9 ft ³ /chamber	
4.03 ft ³ /ft	Stone Void Volume****	4.07 ft ³ /ft	
10.59 ft ³ /ft	Installed Storage Capacity	10.52 ft ³ /ft	
74.9 ft ³ /chamber	Installed Storage Capacity	74.9 ft ³ /chamber	
70 lbs	Weight	74 lbs	
PP	Material	PP	
Injection Molded	MFG Method	Injection Molded	
ASTM F2418	ASTM Spec(s)	ASTM F2418	
ASTM F2787		ASTM F2787	

* Used in Installed Storage Calculations **Measured from top of chamber to bottom of pavement
 *** Measured from the top of chamber to the top of pavement ****Assumes 40% porosity

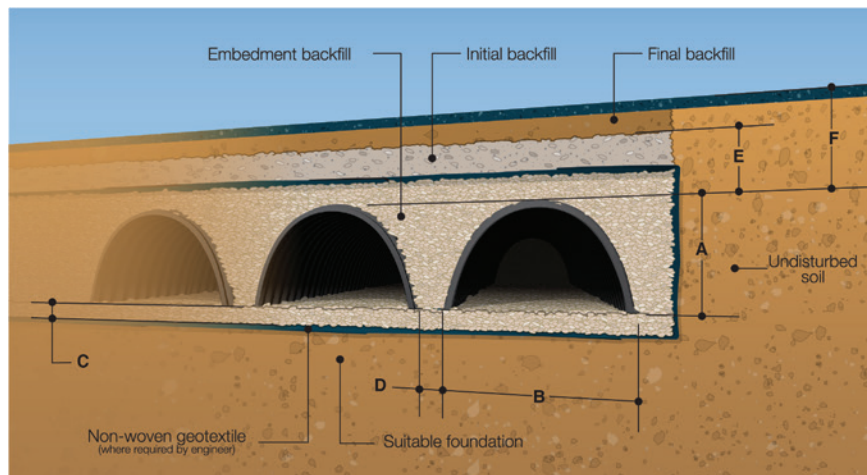


HydroStor[®] | HS180 vs Stormtech MC-3500



Hydrostor HS180		Stormtech MC-3500	
45.5"	Height	45"	
77.8"	Width	77"	
85.3"	Installed Length	86"	
9"	Bedding	9"	
5"	Chamber Spacing	6"	
12"	Chamber Embedment Backfill*	12"	
18"	Min. Cover Height**	18"	
72.5"	Min. Installed Depth to Base of Stone	72"	
8'	Max. Burial Depth***	8'	
15.98 ft ³ /ft	Chamber Storage	15.33 ft ³ /ft	
113.6 ft ³ /chamber	Chamber Storage	109.9 ft ³ /chamber	
8.78 ft ³ /ft	Stone Void Volume****	9.63 ft ³ /ft	
24.76 ft ³ /ft	Installed Storage Capacity	24.42 ft ³ /ft	
176 ft ³ /chamber	Installed Storage Capacity	175 ft ³ /chamber	
127 lbs	Weight	134 lbs	
PP	Material	PP	
Injection Molded	MFG Method	Injection Molded	
ASTM F2418	ASTM Spec(s)	ASTM F2418	
ASTM F2787		ASTM F2787	

* Used in Installed Storage Calculations **Measured from top of chamber to bottom of pavement
 *** Measured from the top of chamber to the top of pavement ****Assumes 40% porosity

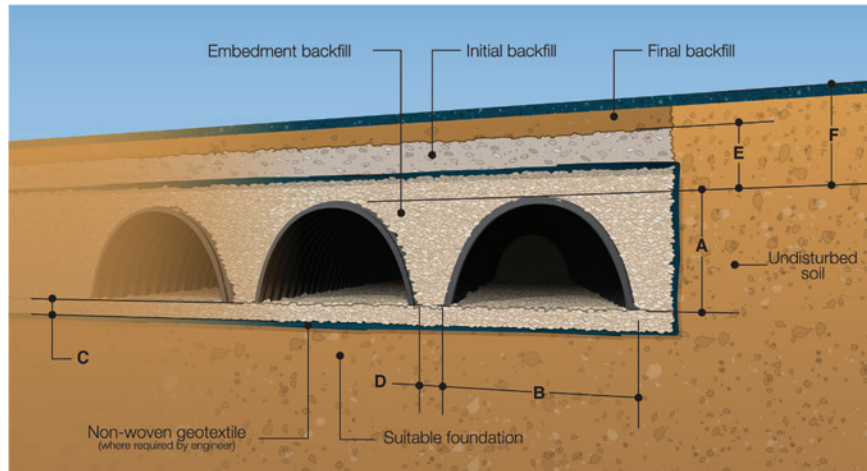


HydroStor® | HS290 vs Stormtech MC-4500

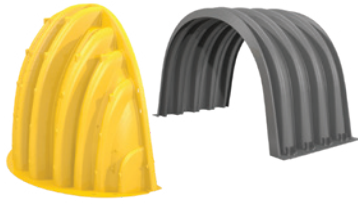


Hydrostor HS290		Stormtech MC-4500	
59.5"	Height	60"	
100.5"	Width	100"	
48.3"	Installed Length	48.3"	
9"	Bedding	9"	
8.5"	Chamber Spacing	9"	
12"	Chamber Embedment Backfill*	12"	
24"	Min. Cover Height**	24"	
92.5"	Min. Installed Depth to Base of Stone	93"	
8'	Max. Burial Depth***	7'	
27.23 ft ³ /ft	Chamber Storage	26.45 ft ³ /ft	
109.6 ft ³ /chamber	Chamber Storage	106.5 ft ³ /chamber	
13.64 ft ³ /ft	Stone Void Volume****	13.95 ft ³ /ft	
40.87 ft ³ /ft	Installed Storage Capacity	40.4 ft ³ /ft	
164.5 ft ³ /chamber	Installed Storage Capacity	162.6 ft ³ /chamber	
125 lbs	Weight	120 lbs	
PP	Material	PP	
Injection Molded	MFG Method	Injection Molded	
ASTM F2418	ASTM Spec(s)	ASTM F2418	
ASTM F2787		ASTM F2787	

* Used in Installed Storage Calculations **Measured from top of chamber to bottom of pavement
 *** Measured from the top of chamber to the top of pavement ****Assumes 40% porosity



HydroStor® | HS290 vs Stormtech MC-7200



Hydrostor HS290	Chamber Comparison	Stormtech MC-7200
59.5"	Height	60"
100.5"	Width	100"
48.3"	Installed Length	79.1"
109.6 ft ³ /chamber	Chamber Storage	175.9 ft ³ /chamber
164.5 ft ³ /chamber	Installed Storage Capacity	267.3 ft ³ /chamber
125 lbs	Weight	202 lbs
PP	Material	PP
Injection Molded	MFG Method	Injection Molded
ASTM F2418 ASTM F2787	ASTM Spec(s)	ASTM F2418 ASTM F2787
Product Moved by Hand	Chamber Installation* Requirements	Equipment Needed for Moving Product
31.25 lbs	Weight Per Lifting Handle	101 lbs

* Light weight and lifting handles allows HydroStor HS290 chambers to be moved by hand; Weight and lack of lifting handles requires equipment to move Stormtech MC-7200 chambers, resulting in more labor, longer installation time, and higher installation costs.

Installation Comparison (28 ft. row†)

† Due to the differing chamber lengths, 28' is the first common length of a row of installed chambers and the basis of the comparison.

7	No. of Chambers	4
27.23 ft ³ /ft	Chamber Storage	26.68 ft ³ /ft
40.87 ft ³ /ft	Installed Storage Capacity	40.5 ft ³ /ft
12"	Chamber Embedment Backfill**	12"
24"	Min. Cover Height***	24"
8'	Max. Burial Depth****	7'
13.64 ft ³ /ft	Stone Void Volume†	13.82 ft ³ /ft
9"	Bedding	9"
8.5"	Chamber Spacing	9"
92.5"	Min. Installed Depth to Base of Stone	93"

** Used in Installed Storage Calculations ***Measured from top of chamber to bottom of pavement
**** Measured from the top of chamber to the top of pavement †Assumes 40% porosity

