

HydroStor[®] | HS31 vs Stormtech SC-310

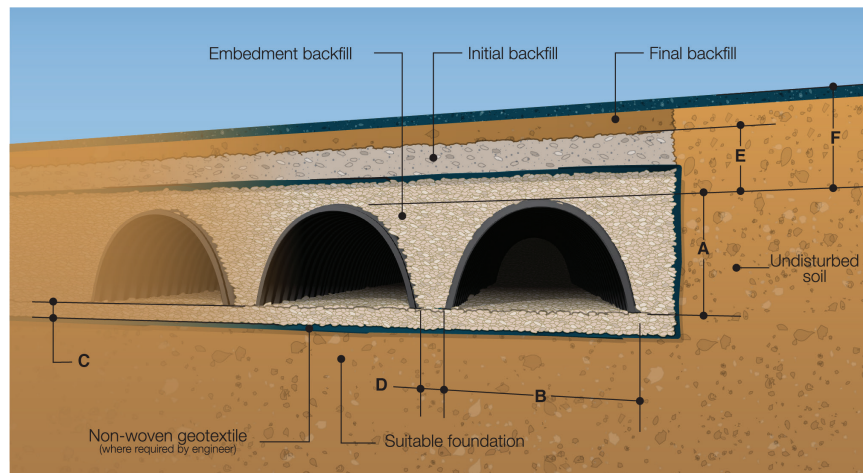


Hydrostor HS31

Stormtech SC-310

16"	Height (A)	16"
34"	Width (B)	34"
85.4"	Installed Length	85.4"
6"	Bedding (C)	6"
6"	Chamber Spacing (D)	6"
6"	Chamber Embedment Backfill*	6"
18"	Min. Cover Height (E)**	18"
40"	Min. Installed Depth to Base of Stone	40"
8'	Max. Burial Depth (F)***	8'
2.09 ft ³ /ft	Chamber Storage	2.07 ft ³ /ft
14.9 ft ³ /chamber	Chamber Storage	14.7 ft ³ /chamber
2.28 ft ³ /ft	Stone Void Volume****	2.29 ft ³ /ft
4.37 ft ³ /ft	Installed Storage Capacity	4.36 ft ³ /ft
31.1 ft ³ /chamber	Installed Storage Capacity	31 ft ³ /chamber
32 lbs.	Weight	37 lbs.
PP	Material	PP
Injection Molded	MFG Method	Injection Molded
ASTM F2418	ASTM Spec(s)	ASTM F2418
ASTM F2787		ASTM F2787

* Used in Installed Storage Calculations **Measured from top of chamber to bottom of pavement
 *** Measured from the top of chamber to the top of pavement ****Assumes 40% porosity



HydroStor[®] | HS75 vs Stormtech SC-740

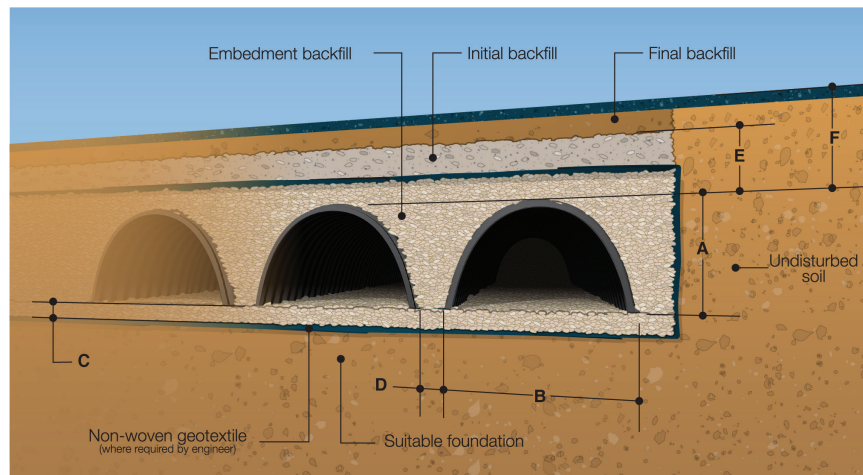


Hydrostor HS75

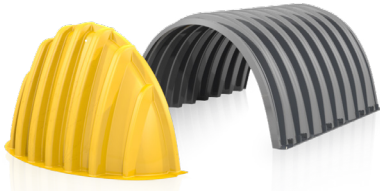
Stormtech SC-740

29.7"	Height (A)	30"
51"	Width (B)	51"
84.9"	Installed Length	85.4"
6"	Bedding (C)	6"
6"	Chamber Spacing (D)	6"
6"	Chamber Embedment Backfill*	6"
18"	Min. Cover Height (E)**	18"
53.7"	Min. Installed Depth to Base of Stone	54"
8'	Max. Burial Depth (F)***	8'
6.56 ft ³ /ft	Chamber Storage	6.45 ft ³ /ft
46.4 ft ³ /chamber	Chamber Storage	45.9 ft ³ /chamber
4.03 ft ³ /ft	Stone Void Volume****	4.07 ft ³ /ft
10.59 ft ³ /ft	Installed Storage Capacity	10.52 ft ³ /ft
74.9 ft ³ /chamber	Installed Storage Capacity	74.9 ft ³ /chamber
70 lbs.	Weight	74 lbs.
PP	Material	PP
Injection Molded	MFG Method	Injection Molded
ASTM F2418	ASTM Spec(s)	ASTM F2418
ASTM F2787		ASTM F2787

* Used in Installed Storage Calculations **Measured from top of chamber to bottom of pavement
 *** Measured from the top of chamber to the top of pavement ****Assumes 40% porosity



HydroStor[®] | HS180 vs Stormtech MC-3500

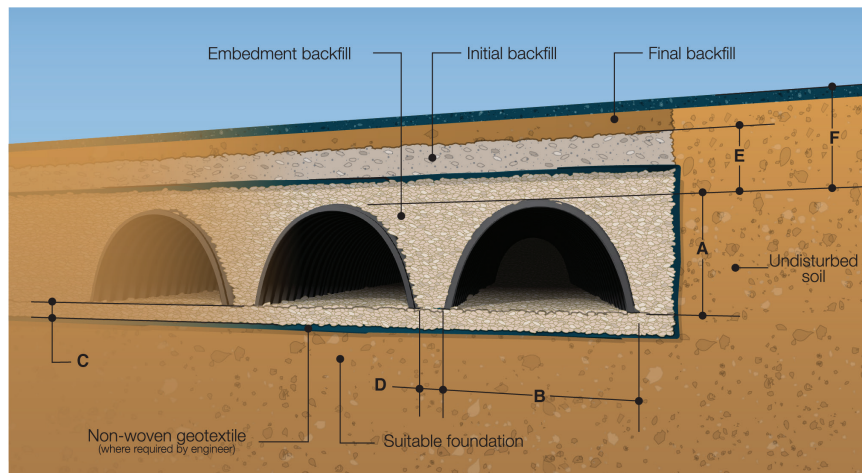


Hydrostor HS180

Stormtech MC-3500

45.5"	Height (A)	45"
77.8"	Width (B)	77"
85.3"	Installed Length	86"
9"	Bedding (C)	9"
8"	Chamber Spacing (D)	9"
12"	Chamber Embedment Backfill*	12"
23.5"	Min. Cover Height (E)**	24"
78"	Min. Installed Depth to Base of Stone	78"
8'	Max. Burial Depth (F)***	8'
15.98 ft ³ /ft	Chamber Storage	15.33 ft ³ /ft
113.6 ft ³ /chamber	Chamber Storage	109.9 ft ³ /chamber
9.34 ft ³ /ft	Stone Void Volume****	9.63 ft ³ /ft
25.32 ft ³ /ft	Installed Storage Capacity	24.96 ft ³ /ft
180 ft ³ /chamber	Installed Storage Capacity	178.9 ft ³ /chamber
127 lbs.	Weight	134 lbs.
PP	Material	PP
Injection Molded	MFG Method	Injection Molded
ASTM F2418	ASTM Spec(s)	ASTM F2418
ASTM F2787		ASTM F2787

* Used in Installed Storage Calculations **Measured from top of chamber to bottom of pavement
 *** Measured from the top of chamber to the top of pavement ****Assumes 40% porosity



HydroStor[®] | HS290 vs Stormtech MC-4500



Hydrostor HS290

Stormtech MC-4500

59.5"	Height (A)	60"
100.5"	Width (B)	100"
48.3"	Installed Length	48.3"
9"	Bedding (C)	9"
8.5"	Chamber Spacing (D)	9"
12"	Chamber Embedment Backfill*	12"
24"	Min. Cover Height (E)**	24"
92.5"	Min. Installed Depth to Base of Stone	93"
8'	Max. Burial Depth (F)***	7'
27.23 ft ³ /ft	Chamber Storage	26.45 ft ³ /ft
109.6 ft ³ /chamber	Chamber Storage	106.5 ft ³ /chamber
13.49 ft ³ /ft	Stone Void Volume****	13.95 ft ³ /ft
40.72 ft ³ /ft	Installed Storage Capacity	40.4 ft ³ /ft
163.9 ft ³ /chamber	Installed Storage Capacity	162.6 ft ³ /chamber
125 lbs.	Weight	120 lbs.
PP	Material	PP
Injection Molded	MFG Method	Injection Molded
ASTM F2418	ASTM Spec(s)	ASTM F2418
ASTM F2787		ASTM F2787

* Used in Installed Storage Calculations **Measured from top of chamber to bottom of pavement
 *** Measured from the top of chamber to the top of pavement ****Assumes 40% porosity

