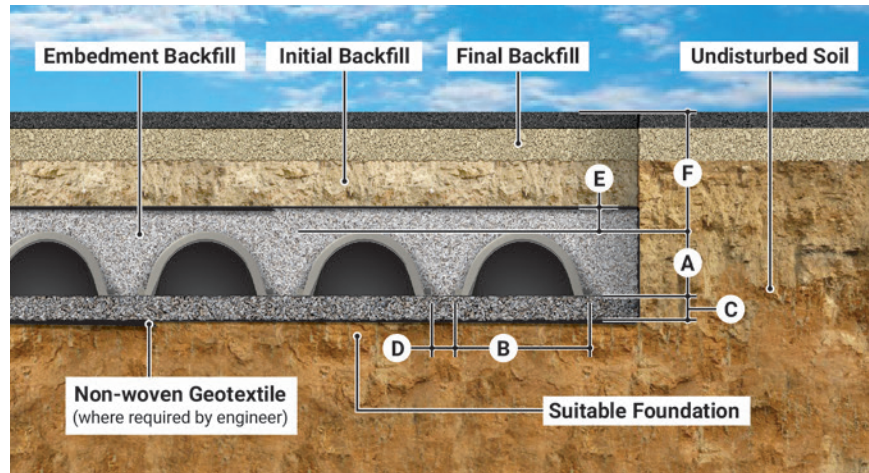


# HydroStor<sup>®</sup> | HS31 vs Stormtech SC-310



Hydrostor HS31		Stormtech SC-310	
16"	Height (A)	16"	
34"	Width (B)	34"	
85.5"	Installed Length	85.4"	
6"	Bedding (C)	6"	
6"	Chamber Spacing (D)	6"	
6"	Chamber Embedment Backfill* (E)	6"	
18"	Min. Cover Height** (F)	18"	
40"	Min. Installed Depth to Base of Stone	40"	
8'	Max. Burial Depth***	8'	
2.13 ft <sup>3</sup> /ft	Storage per Lin. Ft.	2.07 ft <sup>3</sup> /ft	
4.39 ft <sup>3</sup> /ft	Installed Storage per Lin. Ft.	4.36 ft <sup>3</sup> /ft	
15.2 ft <sup>3</sup> /chamber	Storage per Chamber	14.7 ft <sup>3</sup> /chamber	
31.2 ft <sup>3</sup> /chamber	Installed Storage per Chamber	31 ft <sup>3</sup> /chamber	
2.26 ft <sup>3</sup> /ft	Stone Void Volume****	2.29 ft <sup>3</sup> /ft	
34 lbs	Weight	37 lbs	
PP	Material	PP	
Injection Molded	MFG Method	Injection Molded	
ASTM F2418	ASTM Spec(s)	ASTM F2418	
ASTM F2787		ASTM F2787	

\* Used in Installed Storage Calculations \*\*Measured from top of chamber to bottom of pavement  
 \*\*\* Measured from the top of chamber to the top of pavement \*\*\*\*Assumes 40% porosity

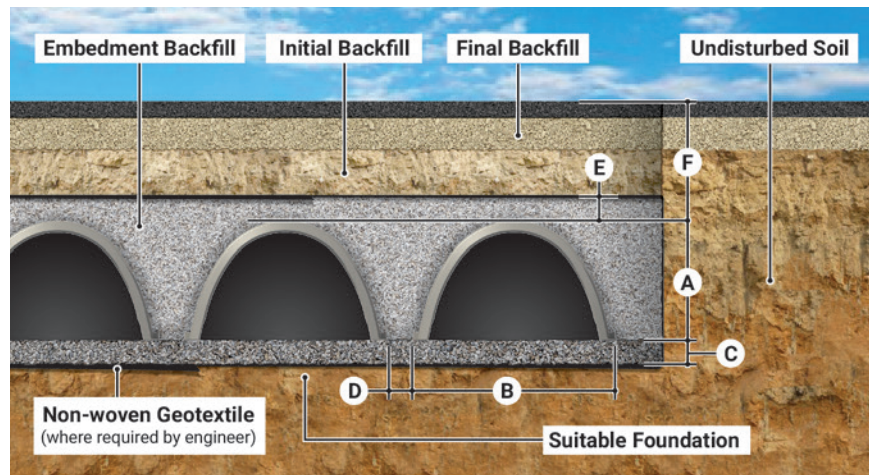


# HydroStor<sup>®</sup> | HS75 vs Stormtech SC-740



Hydrostor HS75		Stormtech SC-740	
29.7"	Height (A)	30"	
51"	Width (B)	51"	
84.9"	Installed Length	85.4"	
6"	Bedding (C)	6"	
6"	Chamber Spacing (D)	6"	
6"	Chamber Embedment Backfill* (E)	6"	
18"	Min. Cover Height** (F)	18"	
54"	Min. Installed Depth to Base of Stone	54"	
8'	Max. Burial Depth***	8'	
6.59 ft <sup>3</sup> /ft	Storage per Lin. Ft.	6.45 ft <sup>3</sup> /ft	
10.60 ft <sup>3</sup> /ft	Installed Storage per Lin. Ft.	10.52 ft <sup>3</sup> /ft	
46.6 ft <sup>3</sup> /chamber	Storage per Chamber	45.9 ft <sup>3</sup> /chamber	
75.0 ft <sup>3</sup> /chamber	Installed Storage per Chamber	74.9 ft <sup>3</sup> /chamber	
4.02 ft <sup>3</sup> /ft	Stone Void Volume****	4.07 ft <sup>3</sup> /ft	
69 lbs	Weight	74 lbs	
PP	Material	PP	
Injection Molded	MFG Method	Injection Molded	
ASTM F2418	ASTM Spec(s)	ASTM F2418	
ASTM F2787		ASTM F2787	

\* Used in Installed Storage Calculations \*\*Measured from top of chamber to bottom of pavement  
 \*\*\* Measured from the top of chamber to the top of pavement \*\*\*\*Assumes 40% porosity

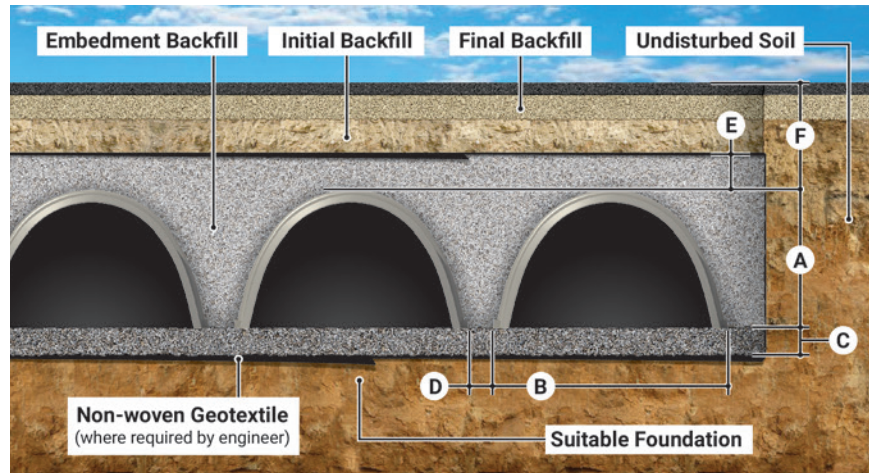


# HydroStor® | HS180 vs Stormtech MC-3500



Hydrostor HS180		Stormtech MC-3500	
45.5"	Height (A)	45"	
77.8"	Width (B)	77"	
85.3"	Installed Length	86"	
9"	Bedding (C)	9"	
5"	Chamber Spacing (D)	6"	
12"	Chamber Embedment Backfill* (E)	12"	
18"	Min. Cover Height** (F)	18"	
72.5"	Min. Installed Depth to Base of Stone	72"	
8'	Max. Burial Depth***	8'	
15.98 ft³/ft	Storage per Lin. Ft.	15.33 ft³/ft	
24.76 ft³/ft	Installed Storage per Lin. Ft.	24.42 ft³/ft	
113.6 ft³/chamber	Storage per Chamber	109.9 ft³/chamber	
176 ft³/chamber	Installed Storage per Chamber	175 ft³/chamber	
8.78 ft³/ft	Stone Void Volume****	9.63 ft³/ft	
122 lbs	Weight	134 lbs	
PP	Material	PP	
Injection Molded	MFG Method	Injection Molded	
ASTM F2418	ASTM Spec(s)	ASTM F2418	
ASTM F2787		ASTM F2787	

\* Used in Installed Storage Calculations \*\*Measured from top of chamber to bottom of pavement  
 \*\*\* Measured from the top of chamber to the top of pavement \*\*\*\*Assumes 40% porosity



# HydroStor® | HS290 vs Stormtech MC-4500

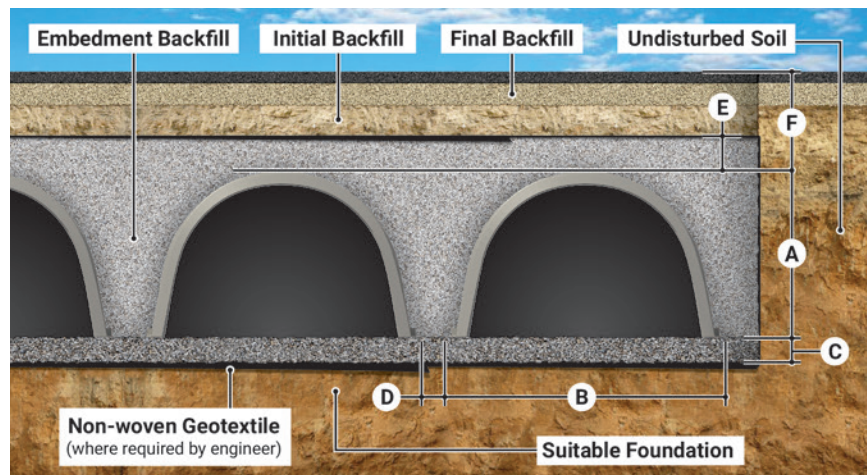


## Hydrostor HS290

## Stormtech MC-4500

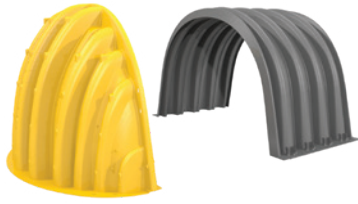
59.5"	Height (A)	60"
100.5"	Width (B)	100"
48.3"	Installed Length	48.3"
9"	Bedding (C)	9"
8.5"	Chamber Spacing (D)	9"
12"	Chamber Embedment Backfill* (E)	12"
24"	Min. Cover Height** (F)	24"
92.5"	Min. Installed Depth to Base of Stone	93"
8'	Max. Burial Depth***	7'
27.23 ft <sup>3</sup> /ft	Storage per Lin. Ft.	26.45 ft <sup>3</sup> /ft
40.87 ft <sup>3</sup> /ft	Installed Storage per Lin. Ft.	40.4 ft <sup>3</sup> /ft
109.6 ft <sup>3</sup> /chamber	Storage per Chamber	106.5 ft <sup>3</sup> /chamber
164.5 ft <sup>3</sup> /chamber	Installed Storage per Chamber	162.6 ft <sup>3</sup> /chamber
13.64 ft <sup>3</sup> /ft	Stone Void Volume****	13.95 ft <sup>3</sup> /ft
112 lbs	Weight	120 lbs
PP	Material	PP
Injection Molded	MFG Method	Injection Molded
ASTM F2418	ASTM Spec(s)	ASTM F2418
ASTM F2787		ASTM F2787

\* Used in Installed Storage Calculations \*\*Measured from top of chamber to bottom of pavement  
 \*\*\* Measured from the top of chamber to the top of pavement \*\*\*\*Assumes 40% porosity





# HydroStor® HS290 vs Stormtech MC-7200



## Hydrostor HS290

### Chamber Comparison

Hydrostor HS290	Chamber Comparison	Stormtech MC-7200
59.5"	Height (A)	60"
100.5"	Width (B)	100"
48.3"	Installed Length	79.1"
109.6 ft <sup>3</sup> /chamber	Storage per Chamber	175.9 ft <sup>3</sup> /chamber
164.5 ft <sup>3</sup> /chamber	Installed Storage per Chamber	267.3 ft <sup>3</sup> /chamber
112 lbs	Weight	202 lbs
PP	Material	PP
Injection Molded	MFG Method	Injection Molded
ASTM F2418 ASTM F2787	ASTM Spec(s)	ASTM F2418 ASTM F2787
Product Moved by Hand	Chamber Installation* Requirements	Equipment Needed for Moving Product
28 lbs	Weight Per Lifting Handle	101 lbs

\* Light weight and lifting handles allows HydroStor HS290 chambers to be moved by hand; Weight and lack of lifting handles requires equipment to move Stormtech MC-7200 chambers, resulting in more labor, longer installation time, and higher installation costs.

### Installation Comparison (28 ft. row†)

† Due to the differing chamber lengths, 28' is the first common length of a row of installed chambers and the basis of the comparison.

7	No. of Chambers	4
27.23 ft <sup>3</sup> /ft	Storage per Lin. Ft.	26.68 ft <sup>3</sup> /ft
40.87 ft <sup>3</sup> /ft	Installed Storage per Lin. Ft.	40.5 ft <sup>3</sup> /ft
12"	Chamber Embedment Backfill** (E)	12"
24"	Min. Cover Height*** (F)	24"
8'	Max. Burial Depth****	7'
13.64 ft <sup>3</sup> /ft	Stone Void Volume†	13.82 ft <sup>3</sup> /ft
9"	Bedding (C)	9"
8.5"	Chamber Spacing (D)	9"
92.5"	Min. Installed Depth to Base of Stone	93"

\*\* Used in Installed Storage Calculations \*\*\*Measured from top of chamber to bottom of pavement  
\*\*\*\* Measured from the top of chamber to the top of pavement †Assumes 40% porosity

