



Pat. US 9,752,600 B2

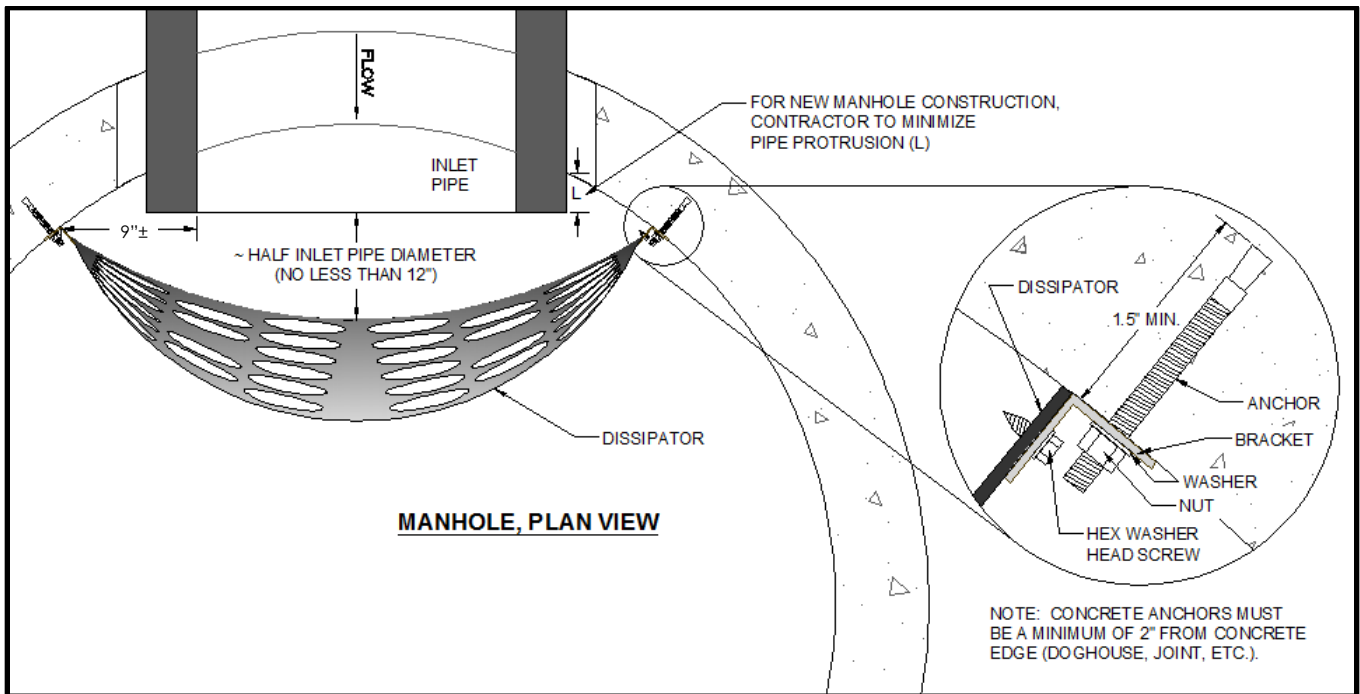


Simple • Effective • Affordable • Environmental Solutions

Part #

Preserver™ Dissipator Installation Manual

*****NOTE: Installer is responsible for safety requirements and safety equipment as necessary for installation of the Preserver™*****



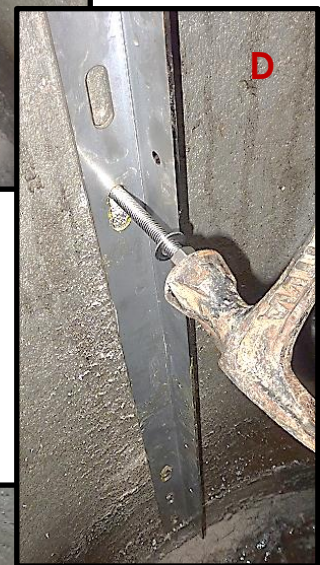
NOTE: Figure above illustrates an installed Preserver™ Dissipator. Installer is recommended to read and understand installation instructions prior to installation, and contact Momentum with any questions. Dissipators installed incorrectly will void the warranty.



1. Install Mounting Brackets

- A. Determine the bracket locations:
 1. Free of obstructions (pipe grout, doghouse, lift holes, etc.)
 2. Place brackets an equal distance from the pipe (typically 9"± from inside).
- B. Center brackets vertically with pipe, plumb, & mark slots.
- C. Drill anchor holes:
 1. One anchor per pair of slots
 2. 2" from any edge (joint, doghouse, lift holes, etc.)
 3. 3" hole depth (1.5" min.)
- D. Clean the holes out of any dust and debris, put the bracket back into position, and install anchors:
 1. Place anchor assemblies into the holes and unscrew the nuts until they are flush with the ends of the anchors.
 2. **Tap** each anchor into the holes, leaving a minimum of 1" of thread exposed.
- E. Tighten anchors:
 1. Adjust the bracket up or down as necessary to center vertically with pipe.
 2. Check that brackets are level with one another.
 3. Tighten the bolts to 25 ft-lbs of torque, or 3-5 turns past the hand tight position.

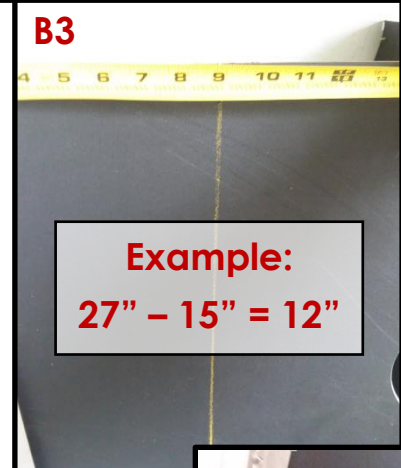
NOTE: If an anchor installation is inadequate, it must be replaced or an additional anchor must be installed in adjacent slot.

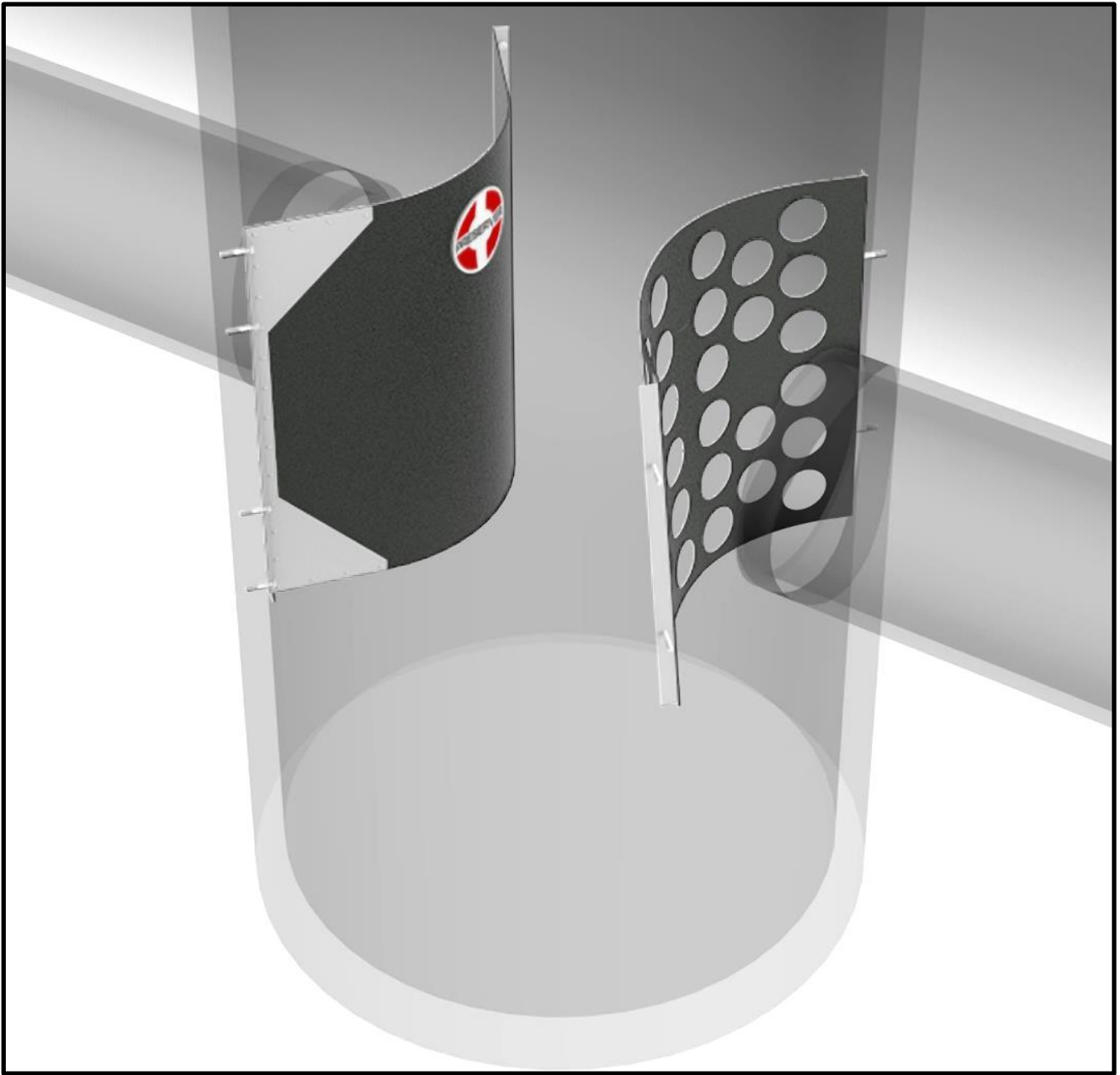


2. Install Preserver™ Dissipator

NOTE: The dissipator will be mounted to the brackets using the stainless steel self-tapping screws and a 3/8" hex driver bit. Secure the driver bit into your drill and **set the drill's variable clutch to a low torque setting to prevent stripping.**

- A. Connect top and bottom of the dissipator to both brackets:
 1. Place the dissipator on the pipe-side of the bracket
 2. Connect dissipator to bracket using one screw at the top and bottom of smaller dissipators, or two screws for larger dissipators.
- B. Determine the amount of material to remove:
 1. Measure the distance from the end of the pipe to the end of the dissipator.
 2. From that measurement, subtract the greater of:
 - a. 15"
 - b. Half the pipe diameter
 3. If that value is 3" or greater, mark the distance on the dissipator from the wall, and draw a vertical cut line.
 4. Check that the cut line is no closer to a dissipator opening than 3". Move cut line if necessary.
 5. Repeat at other bracket.
- C. Cut dissipator:
 1. If determined necessary in the previous step, make a **straight cut** along one cut line using a saw with a wood or metal blade (e.g. circular, reciprocating, jig).
 2. Remove scrap from bracket and retain screws.
- D. Attach dissipator to bracket with screws.
- E. Repeat C & D at other bracket.





Installation of your Preserver™ is now complete!

Please don't hesitate to contact us should you have questions regarding installation of the Preserver™.