



STORMWATER SOLUTIONS / STORAGE / CHAMBERS

HydroStor®

Prinsco offers four sizes of high-performance HydroStor® stormwater chambers designed for site-specific applications such as parking lots, roadways and commercial developments. HydroStor chambers provide an environmentally sustainable underground water management system that optimizes groundwater recharge and saves valuable land resources. Our four storm chamber models are designed to fit almost any type of performance specifications, project footprint and construction budget.

	HS290	HS180	HS75	HS31
				
Installed Storage Capacity*	4.66 m ³ /chamber	5.0 m ³ /chamber	2.12 m ³ /chamber	0.88 ft ³ /chamber
Height	1,511 mm	1,156 mm	754 mm	404 mm
Width	2,554 mm	1,976 mm	1,295 mm	861 mm
Unit Length	1,317 mm	2,253 mm	2,212 mm	2,230 mm
Installed Length	1,227 mm	2,167 mm	2,155 mm	2,169 mm
Weight	56.7 kg	57.6 kg	32 kg	15 kg
Chambers/Pallet	10	19	33	45
Material	Polypropylene	Polypropylene	Polypropylene	Polypropylene
Mfg. Process	Injection Molding	Injection Molding	Injection Molding	Injection Molding
Special Features	Integrated Handle	Integrated Handle	Integrated Handles	Low Profile Chamber
ASTM Standards	Meets or Exceeds	Meets or Exceeds	Meets or Exceeds	Meets or Exceeds

* Assuming 40% void volume of backfill with 230 mm bedding & 300 mm cover for HS290 and HS180, and 150 mm bedding & 150mm cover for HS75 and HS31

Performance

- High performance polypropylene material
- Meets or exceeds **ASTM F2418** product standard & **ASTM F2787** design standard
- Meets **AASHTO H20** live load & **HL93** design load requirements
- Advanced injection molding technology for maximum structural performance

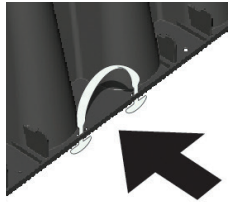
System Design

- Maximum land utilization & minimal environmental impact
- Design tool available at Prinsco.com/HydroStor-Resources
- Available as part of a complete solution with end caps, pipe manifolds & pretreatment options

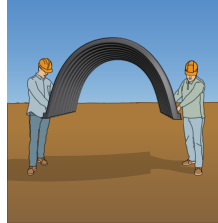
Handling

- Integrated Handles on HS290, HS180 & HS75 for safe on-site handling
- Sturdy and lightweight for safe transport and placement by 2 people
- Specially designed pallet for trouble free handling
- Maximum stacking density to reduce on-site staging footprint

Integrated Handles



Easy to Handle

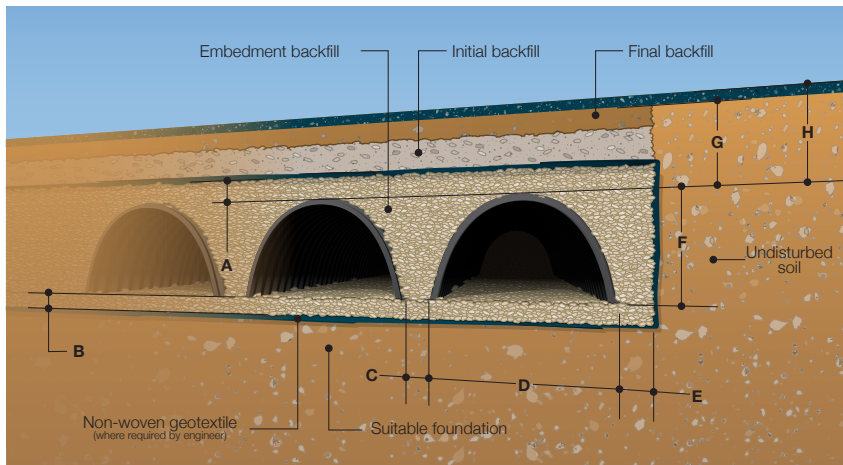


Reinforced Pallet*



* minimum 1.82 m forks required on HS290, HS180 & HS75

Installation Specifications



	HS290	HS180	HS75	HS31
A minimum backfill above chamber	300 mm	300 mm	150 mm	150 mm
B minimum bedding	230 mm	230 mm	150 mm	150 mm
C chamber spacing	216 mm	130 mm	150 mm	150 mm
D chamber width	2,554 mm	1,976 mm	1,295 mm	861 mm
E backfill at edge of system	300 mm	300 mm	300 mm	300 mm
F chamber height	1,511 mm	1,156 mm	754 mm	404 mm
G minimum cover	600 mm	450 mm	450 mm	450 mm
H maximum burial depth	2.44 m	2.44 m	2.44 m	2.44 m

MOBILE RESOURCES



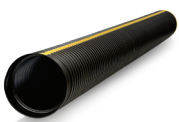
More about **HydroStor®**

Installation Videos
Installation Guides
Specifications
Technical Notes



Prinsco.com/HydroStor-Resources

COLLECTION & CONVEYANCE



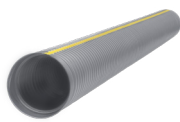
GOLFLO® WT®

AASHTO Dual-Wall Pipe



ECOFLO® 100

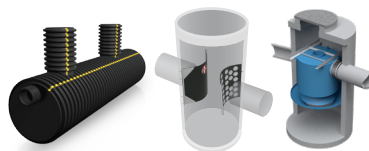
Recycled Dual-Wall Pipe



GOLDPRO® STORM®

Dual-Wall HP Polypropylene

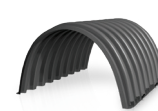
TREATMENT



STORMWATER QUALITY

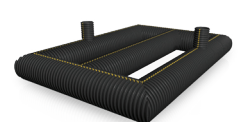
Engineered Water Treatment

STORAGE



HYDROSTOR®

Arched Chambers



UNDERGROUND DETENTION

Customized Pipe Systems