

Introduction

GOLDFLO Tap Tees (GFTT) are fabricated fittings to be used for lateral connections into dual wall pipe. They are designed for field installations that do not require a section of mainline pipe to be removed and replaced by a fabricated tee. Lateral pipe can be connected directly to the GOLDFLO Tap Tee with an external snap or split coupler fitting. When properly installed, GOLDFLO Tap Tees create a soil-tight connection.

Equipment

- GOLDFLO Tap Tee
- Deep hole saw
- Coupler to attach lateral pipe
- Non-woven geotextile
- Quick drying construction adhesive (optional)

Instructions

Step 1:

Expose the mainline pipe. Clean the area near the tap location.

Step 2:

Using a hole saw with a diameter matching the OD of the GFTT sleeve (Table 1), drill or cut a circular hole into the mainline (Figure 2). Do not install the GFTT vertically on the mainline pipe.

Step 3:

Align the GFTT so the radius of the sleeve matches the contour of the inside of the mainline pipe to reduce the penetration of the sleeve into the water flow path.

Step 4:

Fully insert the GFTT so the tabs sit completely within the ID of the mainline pipe. Pull back the fitting so the tabs are near the mainline ID to limit protrusion into the flow area.

- Tools such as a rubber mallet and block of wood may be used to completely insert and align the GFTT. DO NOT directly impact the GFTT.



Figure 1: GOLDFLO Tap Tee



Figure 2: Cored Hole

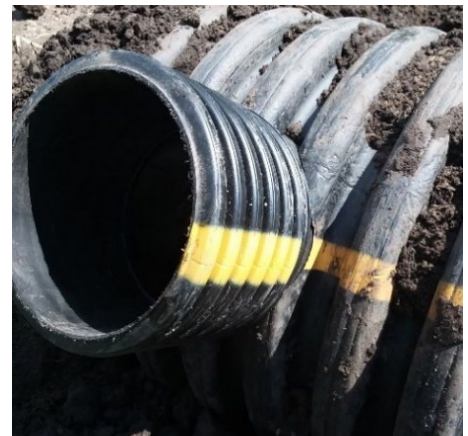


Figure 3: Aligned & Inserted GFTT



Step 5 (optional):

Quick drying construction adhesive can be applied to the exterior of the joint to create a solid connection and reduce the potential for soil infiltration into the pipe.

Step 6:

Wrap the entire connection in a non-woven geotextile and backfill with a Class I crushed rock backfill to provide proper support to the connection (See detail drawing: HDPE Pipe - Tapped Connection - GOLDFLO Tap Tee - D-1-152).



Figure 4: Installed GOLDFLO Tap Tee

Table 1: GOLDFLO Tap Tee Configurations

Configuration	Lateral Diameter	Cored Hole Diameter	Mainline Diameters
4" into 24"	4"	4.5"	10" - 24"
4" into 60"			30" - 60"
6" into 24"	6"	6.5"	12" - 24"
6" into 60"			30" - 60"
8" into 24"	8"	8.5"	15" - 24"
8" into 60"			30" - 60"
10" into 24"	10"	10.7"	18" - 24"
10" into 60"			30" - 60"
12" into 60"	12"	12.0"	24" - 60"