

COVER JOINT BETWEEN PIPE AND END CAP WITH NON-WOVEN GEOTEXTILE

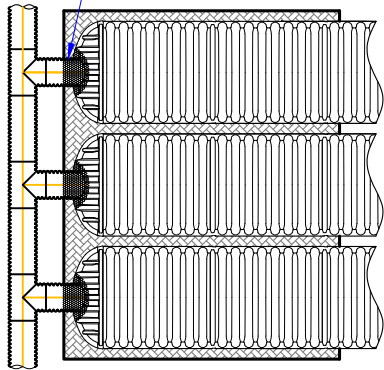


FIGURE 1. INLET MANIFOLD WITH STUBS INTO END CAP OF EACH STORM CHAMBER ROW.

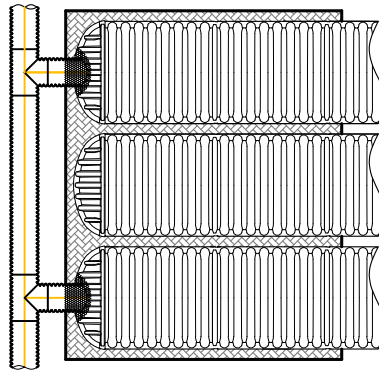


FIGURE 2. INLET MANIFOLD WITH STUBS INTO END CAP OF ALTERNATING STORM CHAMBER ROWS.

DIVERSION STRUCTURE PER ENGINEER

SEDIMENT ROW

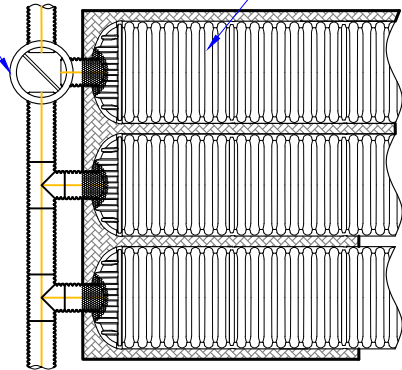


FIGURE 3. DIVERSION STRUCTURE PER ENGINEER TO DIRECT INITIAL/ LOW FLOW TO SEDIMENT ROW AHEAD OF INLET MANIFOLD.

WOVEN GEOTEXTILE FABRIC UNDER INLET SIDE³

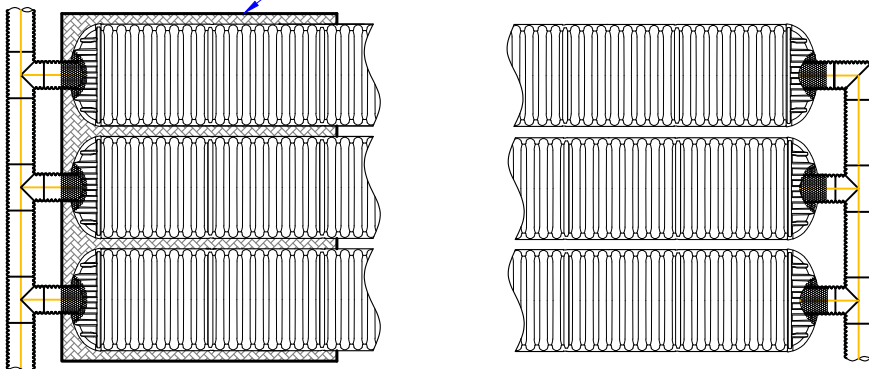


FIGURE 4. INLET MANIFOLD ON THE LEFT SIDE AND OUTLET MANIFOLD ON THE RIGHT SIDE.

COVER JOINT BETWEEN PIPE AND END CAP WITH NON-WOVEN GEOTEXTILE

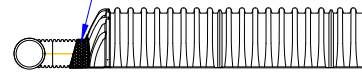


FIGURE 5. HEADER WITH SAME SIZE MANIFOLD STUB INTO END CAP.

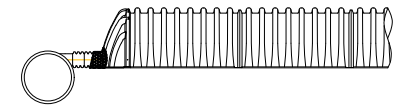


FIGURE 6. HEADER WITH REDUCING STUB AT CROWN INTO INVERT OF END CAP WITH HEADER INVERT BELOW CHAMBER INVERT.



FIGURE 7. HEADER WITH REDUCING STUB AT FLOWLINE INTO END CAP.



FIGURE 8. HEADER WITH REDUCING STUB AT CROWN INTO TOP OF END CAP WITH HEADER INVERT AT OR BELOW STUB INVERT.

NOTES:

1. THERE ARE MANY INLET HEADER AND OUTLET HEADER POSSIBILITIES. THE CONFIGURATIONS SHOWN ON THIS DRAWING ARE JUST A FEW OF THE OPTIONS.

2. INLET AND OUTLET MANIFOLDS SHALL BE INSERTED AT LEAST 12" (300 mm) INTO CHAMBER END CAPS. MANIFOLD HEADERS SHALL BE AT LEAST 12" (300 mm) FROM THE BASE OF THE END CAPS.

3. PRINSCO RECOMMENDS A SCOUR CONTROL MEASURE AT INLETS SUCH AS A WOVEN GEOTEXTILE FABRIC TO PROTECT FOUNDATION STONE. REFER TO PRINSCO'S SCOUR PROTECTION DETAIL.

4. PRINSCO RECOMMENDS A NON-WOVEN GEOTEXTILE BE PLACED AT ALL PIPE-END CAP JOINTS.

THIS DETAIL DEPICTS RECOMMENDED INSTALLATION PRACTICES AND IS NOT INTENDED TO SUPERSEDE ANY NATIONAL, STATE OR LOCAL SPECIFICATIONS. PRINSCO BEARS NO RESPONSIBILITY FOR ANY ALTERATIONS, REVISION AND/OR DEVIATION FROM THIS STANDARD DETAIL. PRINSCO HAS NOT PERFORMED ANY ENGINEERING OR DESIGN SERVICE FOR THIS PROJECT. THE DESIGN ENGINEER SHALL REVIEW THESE DETAILS PRIOR TO CONSTRUCTION TO VERIFY SUITABILITY. © PRINSCO, INC.



1717 16TH ST. NE
WILLMAR, MN 56201
www.prinSCO.com

TITLE: HYDROSTOR CHAMBER - HEADER CONFIGURATIONS			
DRAWN BY: RMA	DATE: 09-Feb-24	DRAWING NUMBER: D-7-100	
SCALE: NTS	SHEET: 1 OF 1		