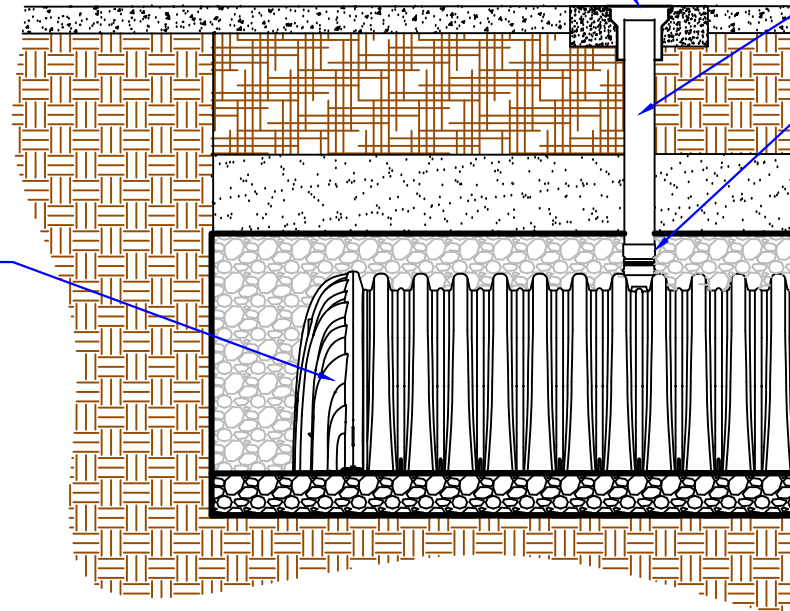


TRAFFIC RATED
BOX AND GRATE

4" (100 mm) PVC VENT TUBE

4" (100 mm) TAP TEE CONNECTION²
OR PVC COUPLER

HYDROSTOR HS75
CHAMBER & END CAP



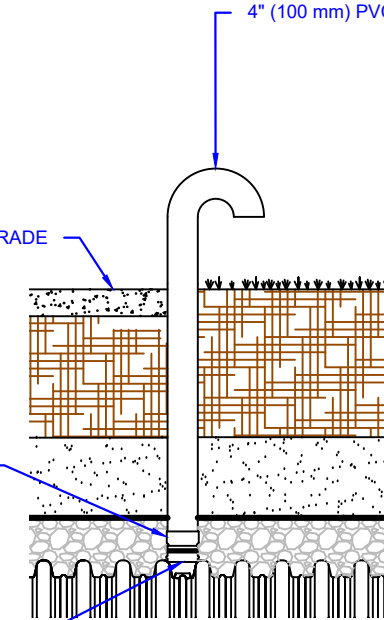
PAVEMENT OR FINISHED GRADE

4" (100 mm) TAP TEE CONNECTION²
OR PVC COUPLER

4" (100 mm) PVC VENT TUBE¹

CORED HOLE⁶

OPTIONAL 4" (100 mm)
VENT DETAIL



NOTES:

1. 4" (100 mm) VENT TUBE MAY BE CONNECTED THROUGH ANY CHAMBER CIRCULAR CUT OUT POINT, LOCATED AT THE CENTER OF EACH HS75 CHAMBER.
2. TAP TEE CONNECTION MAY CONSIST OF QWICKSEAL OR APPROVED EQUAL.
3. ALL PVC FITTINGS TO BE SOLVENT CEMENTED.
4. PVC MAY BE EITHER SDR 35 or SCH 40.
5. PVC PIPE MAY BE SOLID OR PERFORATED PER ENGINEER.
6. CORE HOLE SIZE AS FOLLOWS: 4" (100 mm) CUT TO 5" (125 mm)

THIS DETAIL DEPICTS RECOMMENDED INSTALLATION PRACTICES AND IS NOT INTENDED TO SUPERSEDE ANY NATIONAL, STATE OR LOCAL SPECIFICATIONS. PRINSCO BEARS NO RESPONSIBILITY FOR ANY ALTERATIONS, REVISION AND/OR DEVIATION FROM THIS STANDARD DETAIL. PRINSCO HAS NOT PERFORMED ANY ENGINEERING OR DESIGN SERVICE FOR THIS PROJECT. THE DESIGN ENGINEER SHALL REVIEW THESE DETAILS PRIOR TO CONSTRUCTION TO VERIFY SUITABILITY. © PRINSCO, INC.



1717 16TH ST. NE
WILLMAR, MN 56201
www.prinSCO.com

TITLE: HYDROSTOR HS75 - VENT TUBE			
DRAWN BY: HDC	DATE: 14-Aug-24	DRAWING NUMBER:	
SCALE: NTS	SHEET: 1 OF 1	D-7-308	