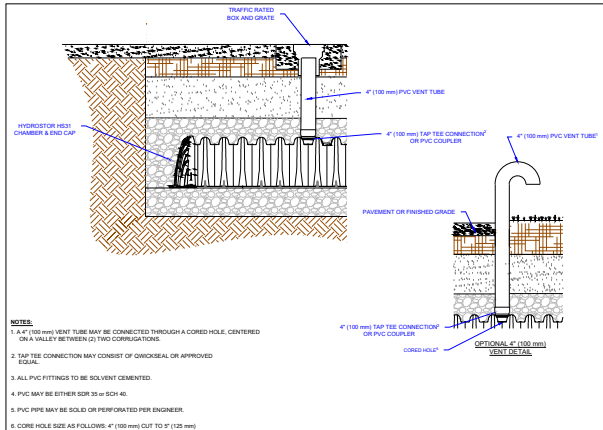
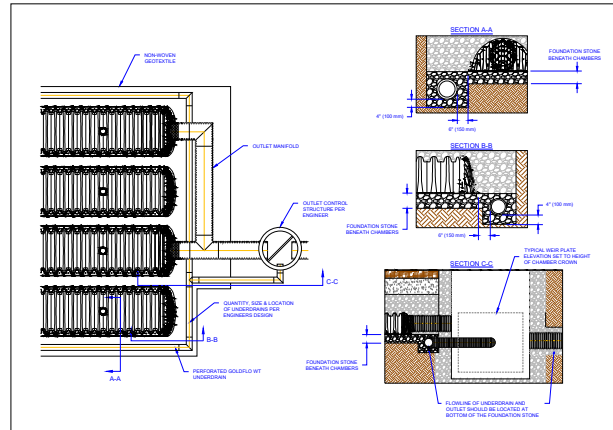


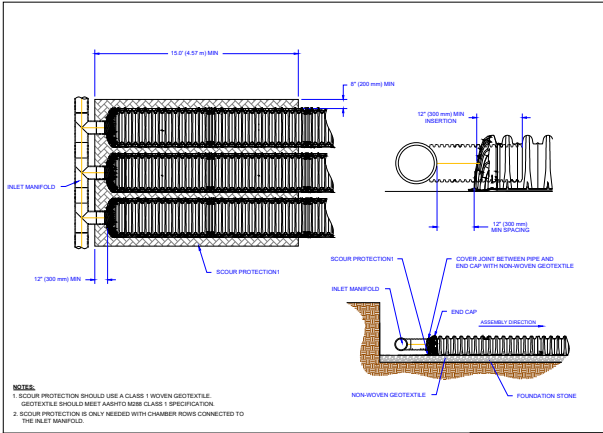
HYDROSTOR HS31 - CROSS SECTION
 1717 16TH ST. NE, WILLMAR, MN 56201
 HYDROSTOR HS31 - CROSS SECTION
 DATE: 07-2010
 SCALE: 1/2\"/>



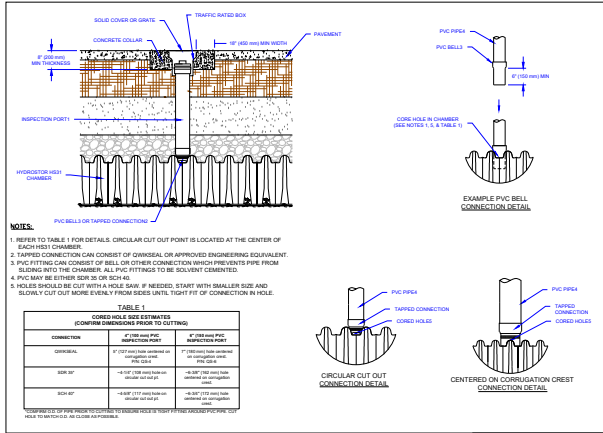
HYDROSTOR HS31 - VENT TUBE
 1717 16TH ST. NE, WILLMAR, MN 56201
 HYDROSTOR HS31 - VENT TUBE
 DATE: 07-2010
 SCALE: 1/2\"/>



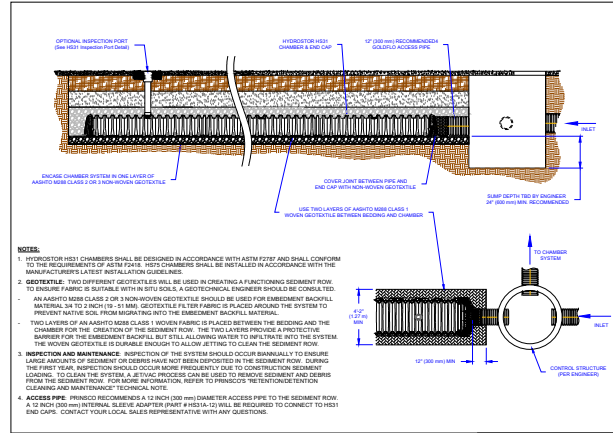
HYDROSTOR HS31 - UNDERDRAIN
 1717 16TH ST. NE, WILLMAR, MN 56201
 HYDROSTOR HS31 - UNDERDRAIN
 DATE: 07-2010
 SCALE: 1/2\"/>



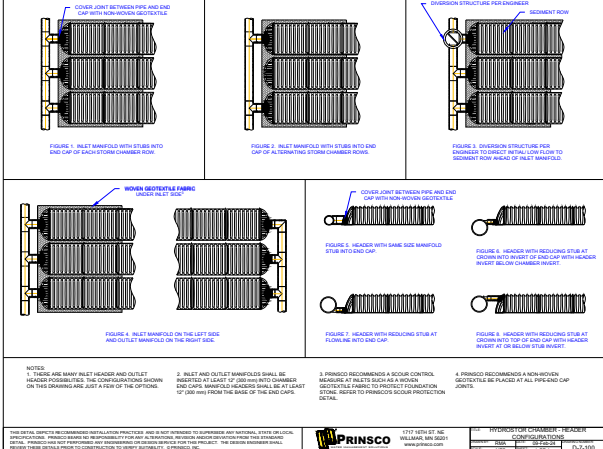
HYDROSTOR HS31 - SCOUR PROTECTION
 1717 16TH ST. NE, WILLMAR, MN 56201
 HYDROSTOR HS31 - SCOUR PROTECTION
 DATE: 07-2010
 SCALE: 1/2\"/>



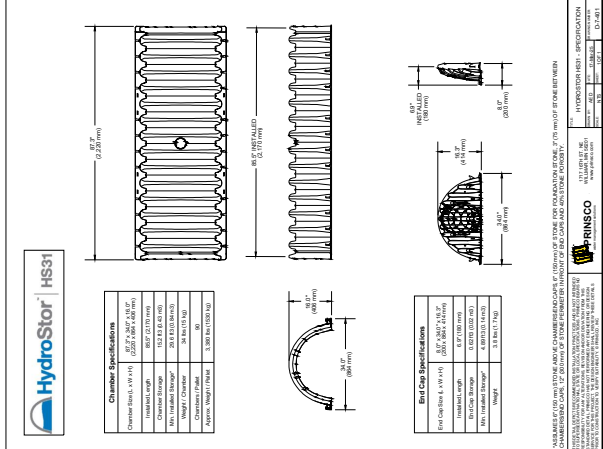
HYDROSTOR HS31 - INSPECTION PORT
 1717 16TH ST. NE, WILLMAR, MN 56201
 HYDROSTOR HS31 - INSPECTION PORT
 DATE: 07-2010
 SCALE: 1/2\"/>



HYDROSTOR HS31 - SEGMENT FROM BOTTOM OF FOUNDATION
 1717 16TH ST. NE, WILLMAR, MN 56201
 HYDROSTOR HS31 - SEGMENT FROM BOTTOM OF FOUNDATION
 DATE: 07-2010
 SCALE: 1/2\"/>



HYDROSTOR HS31 - HEADER
 1717 16TH ST. NE, WILLMAR, MN 56201
 HYDROSTOR HS31 - HEADER
 DATE: 07-2010
 SCALE: 1/2\"/>



HYDROSTOR HS31 - END CAP
 1717 16TH ST. NE, WILLMAR, MN 56201
 HYDROSTOR HS31 - END CAP
 DATE: 07-2010
 SCALE: 1/2\"/>



HYDROSTOR HS31 - ACCESS PORT
 1717 16TH ST. NE, WILLMAR, MN 56201
 HYDROSTOR HS31 - ACCESS PORT
 DATE: 07-2010
 SCALE: 1/2\"/>

THIS DETAIL DEPICTS RECOMMENDED INSTALLATION PRACTICES AND IS NOT INTENDED TO SUPERSEDE ANY NATIONAL, STATE OR LOCAL SPECIFICATIONS. PRINSCO BEARS NO RESPONSIBILITY FOR ANY ALTERATIONS, REVISION AND/OR DEVIATION FROM THIS STANDARD DETAIL. PRINSCO HAS NOT PERFORMED ANY ENGINEERING OR DESIGN SERVICE FOR THIS PROJECT. THE DESIGN ENGINEER SHALL REVIEW THESE DETAILS PRIOR TO CONSTRUCTION TO VERIFY SUITABILITY. © PRINSCO, INC.



1717 16TH ST. NE
 WILLMAR, MN 56201
 www.prinSCO.com

TITLE: HYDROSTOR HS31 - DATA SHEET			
DRAWN BY: AED	DATE: 07-Apr-25	DRAWING NUMBER: D-7-409	
SCALE: NTS	SHEET: 1 OF 1		