



## Stormwater Solutions / Storage / Chambers

### HydroStor®

Prinsco offers four sizes of high-performance HydroStor® stormwater chambers designed for site-specific applications such as parking lots, roadways and commercial developments. HydroStor chambers provide an environmentally sustainable underground water management system that optimizes groundwater recharge and saves valuable land resources. Our four storm chamber models are designed to fit almost any type of performance specifications, project footprint and construction budget.

	HS290	HS180	HS75	HS31
				
Installed Storage Capacity*	4.66 m <sup>3</sup> /chamber	4.98 m <sup>3</sup> /chamber	2.12 m <sup>3</sup> /chamber	0.84 m <sup>3</sup> /chamber
Height	1,511 mm	1,156 mm	754 mm	410 mm
Width	2,553 mm	1,976 mm	1,295 mm	864 mm
Unit Length	1,316 mm	2,253 mm	2,212 mm	2,217 mm
Installed Length	1,227 mm	2,167 mm	2,156 mm	2,172 mm
Weight	50.8 kg	55.3 kg	31.3 kg	15.4 kg
Chambers/Pallet	10	19	33	90
Material	Polypropylene	Polypropylene	Polypropylene	Polypropylene
Mfg. Process	Injection Molding	Injection Molding	Injection Molding	Injection Molding
Special Features	Integrated Handles	Integrated Handles	Integrated Handles	Low Profile Chamber
ASTM Standards	Meets or Exceeds	Meets or Exceeds	Meets or Exceeds	Meets or Exceeds

\* Assuming 40% void volume of backfill with 230 mm bedding and 300 mm cover for HS290 and HS180, and 150 mm bedding and 150mm cover for HS75 and HS31

### Performance

- High performance polypropylene material
- Meets or exceeds **ASTM F2418** product standard and **ASTM F2787** design standard
- Meets **AASHTO H20** live load and **HL93** design load requirements
- Advanced injection molding technology for maximum structural performance

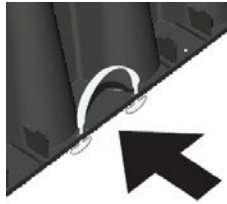
### System Design

- Maximum land utilization and minimal environmental impact
- Design tool available at [Prinsco.com/HydroStor-Resources](https://Prinsco.com/HydroStor-Resources)
- Available as part of a complete solution with end caps, pipe manifolds and pretreatment options

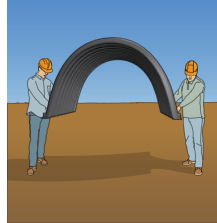
## Handling

- Integrated Handles for safe on-site handling
- Sturdy and lightweight for safe transport and placement by 2 people
- Specially designed pallet for trouble free handling
- Maximum stacking density to reduce on-site staging footprint

Integrated Handles



Easy to Handle

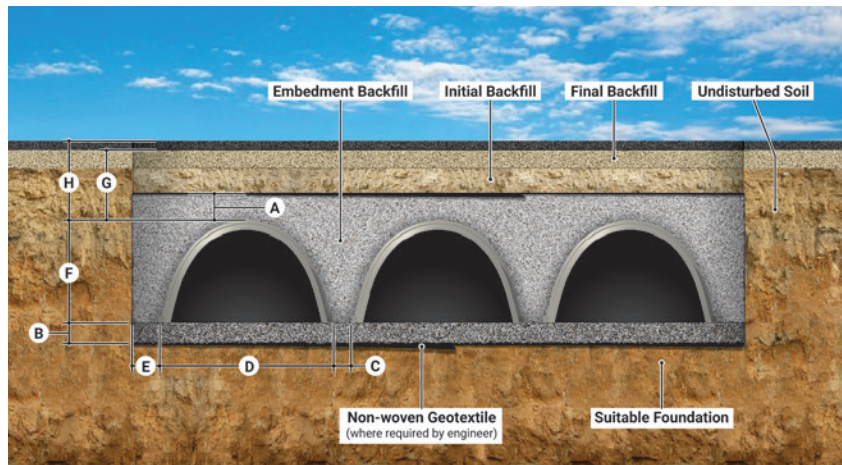


Reinforced Pallet\*



\* minimum 1.8 m forks required

## Installation Specifications



	HS290	HS180	HS75	HS31
<b>A</b> minimum backfill above chamber	300 mm	300 mm	150 mm	150 mm
<b>B</b> minimum bedding	230 mm	230 mm	150 mm	150 mm
<b>C</b> chamber spacing	220 mm	130 mm	150 mm	75 mm
<b>D</b> chamber width	2,553 mm	1,976 mm	1,292 mm	864 mm
<b>E</b> backfill at edge of system	300 mm	300 mm	300 mm	300 mm
<b>F</b> chamber height	1,511 mm	1,156 mm	754 mm	410 mm
<b>G</b> minimum cover	600 mm	450 mm	450 mm	410 mm
<b>H</b> maximum burial depth	2.4 m	2.4 m	2.4 m	2.4 m

## Mobile Resources

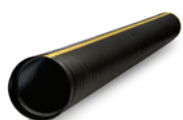
### More about HydroStor®

[Installation Videos](#)  
[Installation Documents](#)  
[Specifications](#)  
[Technical Notes](#)

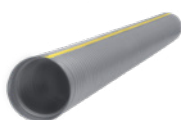


Prinsco products are fully supported by our engineering team and are designed, manufactured and tested to meet/exceed the high performance needs of the construction market. Prinsco's engineering, quality control and production teams are committed to a continuous process of innovation and product development. We are focused on current and future market needs centered around environmental sustainability, water quality, stormwater management and performance advancement.

### COLLECTION & CONVEYANCE



**GOLDFLO®**  
AASHTO Dual-Wall Pipe



**GOLDPRO STORM®**  
Dual-Wall HP Polypropylene

### TREATMENT

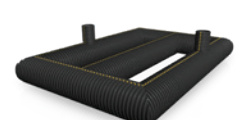


**STORMWATER QUALITY**  
Engineered Water Treatment

### STORAGE



**HYDROSTOR®**  
Arched Chambers



**UNDERGROUND DETENTION**  
Customized Pipe Systems