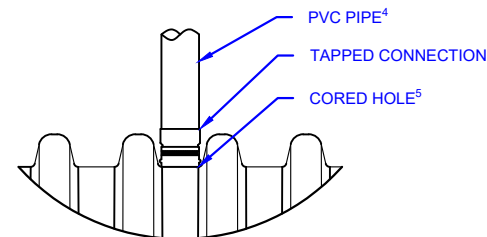
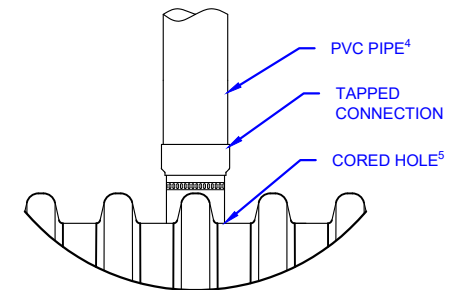


**PVC BELL
CONNECTION DETAIL**



**CENTERED IN VALLEY OF CORRUGATION
CONNECTION DETAIL**



**CENTERED ON CORRUGATION CREST
CONNECTION DETAIL**

NOTES:

1. REFER TO TABLE 1 FOR DETAILS.
2. TAPPED CONNECTION CAN CONSIST OF EZ-TEE, QWIKSEAL, OR APPROVED ENGINEERING EQUIVALENT.
3. PVC FITTING CAN CONSIST OF BELL OR OTHER CONNECTION WHICH PREVENTS PIPE FROM SLIDING INTO THE CHAMBER. ALL PVC FITTINGS TO BE SOLVENT CEMENTED.
4. PVC MAY BE EITHER SDR 35 OR SCH 40.
5. HOLES SHOULD BE CUT WITH A HOLE SAW, ALTHOUGH A RECIPROCATING SAW MAY BE NEEDED FOR 6" AND 8" HOLES ON THIS CHAMBER. IF NEEDED, START WITH SMALLER HOLE AND SLOWLY CUT OUT MORE EVENLY FROM SIDES UNTIL TIGHT FIT OF CONNECTION IN HOLE.

TABLE 1

CORED HOLE SIZE ESTIMATES (CONFIRM DIMENSIONS PRIOR TO CUTTING)				
CONNECTION	4" (100 mm) PVC INSPECTION PORT	6" (150 mm) PVC INSPECTION PORT	8" (200 mm) PVC INSPECTION PORT	10" (250 mm) PVC INSPECTION PORT
PVC SDR 35*	~4-1/4" (108 mm) hole centered in valley of corrugation.	~6-3/8" (162 mm) hole centered on corrugation crest.	~8-1/2" (216 mm) hole centered on corrugation crest.	N/A
PVC SCH 40*	~4-5/8" (117 mm) hole centered in valley of corrugation.	~6-3/4" (172 mm) hole centered on corrugation crest.	~8-3/4" (222 mm) hole centered on corrugation crest.	N/A
QWIKSEAL	5" (125 mm) hole centered in valley of corrugation. P/N: QS-4	Not recommended	9" (230 mm) hole centered on corrugation crest. P/N: QS-8	N/A
EZ-TEE	4-1/2" (114 mm) hole centered on corrugation crest.	6-1/2" (165 mm) hole centered on corrugation crest.	8-3/4" (222 mm) hole centered on corrugation crest.	10-7/8" (276 mm) hole centered on corrugation crest.

*CONFIRM O.D. OF PIPE PRIOR TO CUTTING TO ENSURE HOLE IS TIGHT FITTING AROUND PVC PIPE. CUT HOLE TO MATCH O.D. AS CLOSE AS POSSIBLE.

THIS DETAIL DEPICTS RECOMMENDED INSTALLATION PRACTICES AND IS NOT INTENDED TO SUPERSEDE ANY NATIONAL, STATE OR LOCAL SPECIFICATIONS. PRINSCO BEARS NO RESPONSIBILITY FOR ANY ALTERATIONS, REVISION AND/OR DEVIATION FROM THIS STANDARD DETAIL. PRINSCO HAS NOT PERFORMED ANY ENGINEERING OR DESIGN SERVICE FOR THIS PROJECT. THE DESIGN ENGINEER SHALL REVIEW THESE DETAILS PRIOR TO CONSTRUCTION TO VERIFY SUITABILITY. © PRINSCO, INC.



1717 16TH ST. NE
WILLMAR, MN 56201
www.prinsco.com

TITLE: HYDROSTOR HS180 - INSPECTION PORT			
DRAWN BY:	RMA	DATE:	07-Aug-25
SCALE:	NTS	SHEET:	1 OF 1
		DRAWING NUMBER: D-7-203	